











INSTALLATION INSTRUCTIONS



BEAM L DIRECT
MODELS # BEAMLD
REV. 4



WARNING

-  **THIS PRODUCT MUST BE INSTALLED IN ACCORDANCE WITH THE APPLICABLE INSTALLATION CODE BY A PERSON FAMILIAR WITH THE CONSTRUCTION AND OPERATION OF THE PRODUCT AND THE HAZARDS INVOLVED.**
CE PRODUIT DOIT ETRE INSTALLE SELON LE CODE D'INSTALLATION PERTINENT, PAR UNE PERSONNE QUI CONNAIT BIEN LE PRODUIT ET SON FONCTIONNEMENT AINSI QUE LES RISQUES INHERENTS.
-  **DISCONNECT POWER PRIOR TO ANY INSTALLATION.**
DEBRANCHEZ LE COURANT AVANT TOUTE INSTALLATION.
-  **CAP ALL WIRING CONNECTIONS WITH UL APPROVED WIRE CONNECTORS.**
COUVRIR TOUTES LES CABLES AVE DES CONNECTIONS APPROUVES (UL).
-  **VERIFY SUPPLY VOLTAGE MEETS LUMINAIRE LABEL SPECIFICATIONS.**
VERIFIEZ QUE LA TENSION SOIT COMPATIBLE AVEC LES CARACTERISTIQUES DU LUMINAIRE MARQUE SUR LETIQUETTE.
-  **ALLOW FIXTURE TO COOL BEFORE TOUCHING HEATSINK OR LIGHT SOURCE.**
LAISSEZ LE PROJECTEUR REFOIDIR AVANT DE TOUCHER LE RADIATEUR OU LA SOURCE DE LUMIERE.
-  **DO NOT ATTEMPT TO OPEN OR MAKE REPAIRS INSIDE LUMINAIRE.**
NE PAS TENTER DOUVIRIR OU DE FAIRE DES REPARATINS A L'INTERIEUR DU LUMINAIRE.
-  **AVOID DIRECT VIEWING OF LIGHT SOURCE.**
EVITEZ DE REGARDER DIRECTMENT LA SOURCE LUMINEUSE.
-  **THIS PRODUCT MUS BE INSTALLED BY A QUALIFIED ELECTRICIAN.**
CE PRODUIT DOIT ITRE INSTALLE PAR UN ELECTRICIEN QUALIFIE.
-  **SUITABLE FOR DAMP LOCATION.**
ADAOTE POUR DES ENDROITS HUMIDES.
-  **MIN 105° C SUPPLY CONDUCTORS.**
MIN 105° C ALIMENTATION CONDUCTEURS.

INSTALLATION INSTRUCTIONS

BEAM L DIRECT
MODELS # BEAMLD
REV. 4

Provided Parts List

The components have been packed to avoid damage during transit. Inspect the components to confirm there is no physical damage. Do not install damaged components. The carton contains the following:

- ★ Beam Direct (BEAMLD) fixture
- ★ Mounting Brackets and Hardware (may be attached to fixture depending on mounting type)
- ★ Lensing (shipped separate from fixtures for Continuous Row installations)
- ★ Installation Manual

Mounting

Inspect mounting location for damage. Make sure the structure can support the weight of the BEAMLD fixture. Follow all UL, NEC and minimum load rating guidelines when selecting and installing mounting hardware for the fixture.

- ★ Fixture Weights:
BEAMLD - 2' x 2' (14lbs. max) / 3' x 3' (21lbs. max) / 4' x 4' (28lbs. Max)

Pendant Mount Instructions

Pendant Mount Fixtures come standard with (2) two adjustable grippers and (1) fixed position gripper (at fixture joint) that accepts 1/16" aircraft cable. Adjust gripper location by loosening 1-40 x .313" screw and sliding into position anywhere along the top of the fixture. Tighten screw to lock mounting bracket in place.



(Mounting accessories shown in contrasting color to provide detail. Fixtures are shipped with matching mounting accessories, unless specified otherwise.)

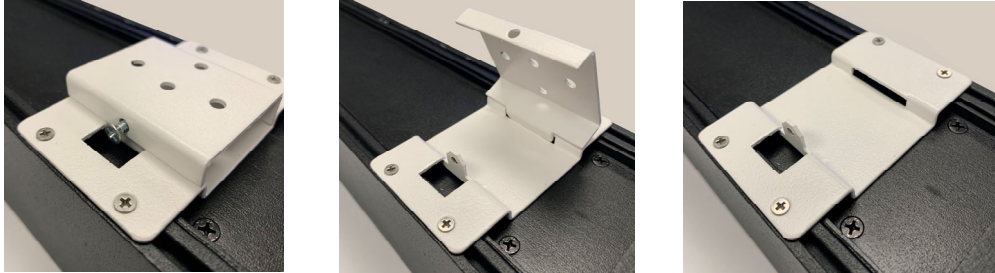
7/22/2019 - PAGE 2

INSTALLATION INSTRUCTIONS

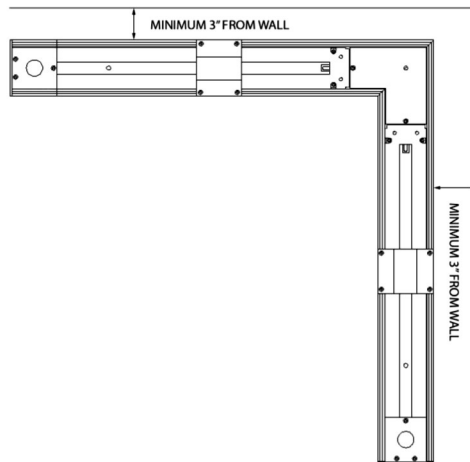
BEAM L DIRECT
MODELS # BEAMLD
REV. 4

Surface Mount Instructions

1. Remove the side screws that fasten the top portions of the brackets to the lower portions attached to the fixture. Lift the top portions off the fixture.



2. Ensuring the surface can support the weight of the fixture, secure the top portions of the brackets to the surface at the desired locations. Please note: The surface mount bracket must be located at a MINIMUM of 3" from an adjacent wall.



3. Loosen the 4 screws in the lower portions of the brackets attached to the fixture and slide along the fixture to match the locations of the top portions mounted to the surface.
4. After the electrical connections have been made, match the tabs on the top bracket sections to the slot in the bottom brackets, and slide fixture into place.
5. Secure fixture in place by reattaching the (2) two side screws removed earlier.

(Mounting accessories shown in contrasting color to provide detail. Fixtures are shipped with matching mounting accessories, unless specified otherwise.)

7/22/2019 - PAGE 3

INSTALLATION INSTRUCTIONS

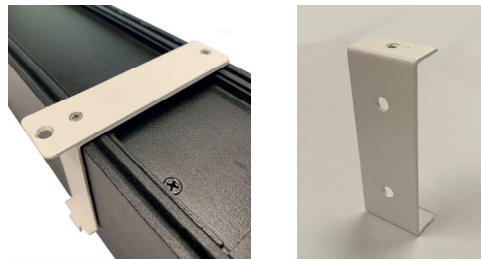
BEAM L DIRECT
MODELS # BEAMLD
REV. 4

Wall Mount Instructions

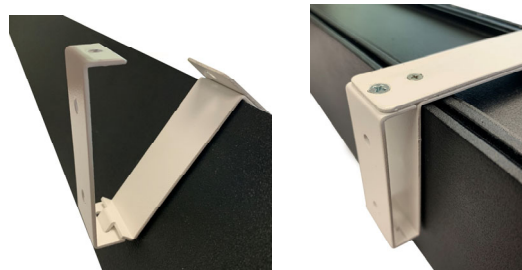
1. The BEAMLD is intended to be mounted to the inside corner of two adjacent walls. It is NOT intended to be mounted with one side on the wall, and the other side protruding. The mounts for this fixture are not intended, nor warranted, for that use.
2. Assemble the full wall mount bracket on both sides of the fixture, loosening the (2) two top inside screws slightly to allow the bracket to slide the length of the fixture leg.



3. Align the supports to the stud or other supporting member in the wall, and tighten the screws to lock them into place. Mark this position on the wall.
4. Remove the (1) one outside screw and disconnect the outside portion of the bracket. Screw this portion of the bracket to the wall, at the marks indicated.



5. After the electrical connections have been made, match the tabs on the top bracket to the slot in the outside brackets, and lower fixture into place. Secure fixture in place by reattaching the (1) one outside top screw removed previously



(Mounting accessories shown in contrasting color to provide detail. Fixtures are shipped with matching mounting accessories, unless specified otherwise.)

7/22/2019 - PAGE 4

INSTALLATION INSTRUCTIONS

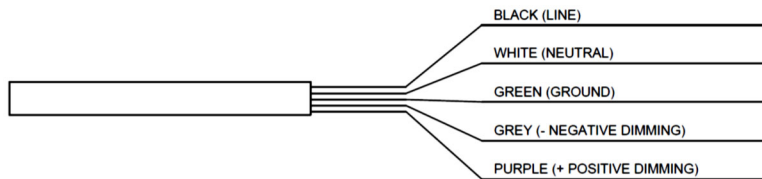


BEAM L DIRECT
MODELS # BEAMLD
REV. 4

BEAMLD Installation

Individual Fixture Installation

1. Power must be turned OFF prior to disconnecting or reconnecting the BEAMLD fixture
2. If fixture is not fitted with existing plug, connect fixture wiring to line side wires. Use only UL listed wiring devices. Purple and Gray leads are used for 0-10 dimming ONLY. Cap wires if not used (see below). The wiring inside the fixtures is rated 14AWG. Line side wiring connected by the installer must be rated for the load per (NEC) National Electric Code and/or local electric code. *



3. Restore power and verify operation.