

INSTALLATION INSTRUCTIONS



STARLINK, STARLINK WIDE
MODELS # SL, SLW
REV. 4



⚠ WARNING

- ★ THIS PRODUCT MUST BE INSTALLED IN ACCORDANCE WITH THE APPLICABLE INSTALLATION CODE BY A PERSON FAMILIAR WITH THE CONSTRUCTION AND OPERATION OF THE PRODUCT AND THE HAZARDS INVOLVED.**
CE PRODUIT DOIT ETRE INSTALLE SELON LE CODE D'INSTALLATION PERTINENT, PAR UNE PERSONNE QUI CONNAIT BIEN LE PRODUIT ET SON FONCTIONNEMENT AINSI QUE LES RISQUES INHERENTS.
- ★ DISCONNECT POWER PRIOR TO ANY INSTALLATION.**
DEBRANCHEZ LE COURANT AVANT TOUTE INSTALLATION.
- ★ CAP ALL WIRING CONNECTIONS WITH UL APPROVED WIRE CONNECTORS.**
COUVRIR TOUTES LES CABLES AVE DES CONNECTIONS APPROUVEES (UL).
- ★ VERIFY SUPPLY VOLTAGE MEETS LUMINAIRE LABEL SPECIFICATIONS.**
VERIFIEZ QUE LA TENSION SOIT COMPATIBLE AVEC LES CARACTERISTIQUES DU LUMINAIRE MARQUE SUR LETIQUETTE.
- ★ ALLOW FIXTURE TO COOL BEFORE TOUCHING HEATSINK OR LIGHT SOURCE.**
LAISSEZ LE PROJECTEUR REFOIDIR AVANT DE TOUCHER LE RADIATEUR OU LA SOURCE DE LUMIERE.
- ★ DO NOT ATTEMPT TO OPEN OR MAKE REPAIRS INSIDE LUMINAIRE.**
NE PAS TENTER DOUVRIRE OU DE FAIRE DES REPARATINS A L'INTERIEUR DU LUMINAIRE.
- ★ AVOID DIRECT VIEWING OF LIGHT SOURCE.**
EVITEZ DE REGARDER DIRECTMENT LA SOURCE LUMINEUSE.
- ★ THIS PRODUCT MUS BE INSTALLED BY A QUALIFIED ELECTRICIAN.**
CE PRODUIT DOIT ITRE INSTALLE PAR UN ELECTRICIEN QUALIFIE.
- ★ SUITABLE FOR UNDER-CABINET MOUNT.**
ADAPTE POUR SOUS-CABINET MOUNT.
- ★ SUITABLE FOR DAMP LOCATION.**
ADAOTE POUR DES ENDROITS HUMIDES.
- ★ MIN 105° C SUPPLY CONDUCTORS.**
MIN 105° C ALIMENTATION CONDUCTEURS.

6/12/2019 - PAGE 1

INSTALLATION INSTRUCTIONS

STARLINK, STARLINK WIDE
MODELS # SL, SLW
REV. 4

Provided Parts List

The components have been packed to avoid damage during transit. Inspect the components to confirm there is no physical damage. Do not install damaged components. The carton contains the following:

- ★ StarLink or StarLink Wide Fixture
- ★ Mounting Brackets and Hardware (may be attached to fixture depending on mounting type)
- ★ Installation Manual

Mounting Options

Inspect mounting location for damage. Make sure the structure can support the weight of the StarPower fixture. Follow all UL, NEC and minimum load rating guidelines when selecting and installing mounting hardware for the fixture.

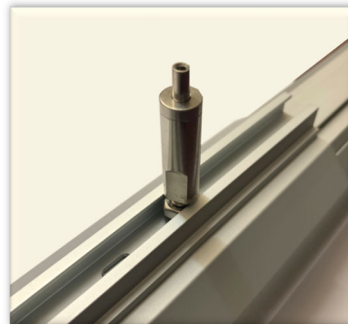
- ★ Fixture Weights:
 - StarLink - 4' (8lbs. max) / 8' (16lbs. max)
 - StarLink Wide - 4' (8lbs. max) / 8' (16lbs. max)

Pendant Mount Instructions

- ★ *The Starter fixture will be provided with (2) mounts to start the run. Only (1) mounting point is needed per every 8' of the StarLink system after the first fixture is installed. Either the Pendant Mount Bracket or the Pendant Sleeve Cover satisfy these mounting requirements.*

Pendant Mount: Pendant Mount Fixtures come standard with adjustable gripper that accepts 1/16" aircraft cable. Adjust gripper location by loosening 6-32 cap nuts and sliding into position anywhere along the top of the fixture. The Pendant Mount bracket also accepts 1/4" threaded rod or chain in lieu of grippers. (FIG. 1)

Pendant Sleeve Cover: The Pendant Sleeve Cover accepts a 1/4"-20 gripper which can be fastened to the top "hat" channel with a 1/4"-20 nut and an appropriately rated washer. (FIG. 2)



INSTALLATION INSTRUCTIONS

STARLINK, STARLINK WIDE
MODELS # SL, SLW
REV. 4

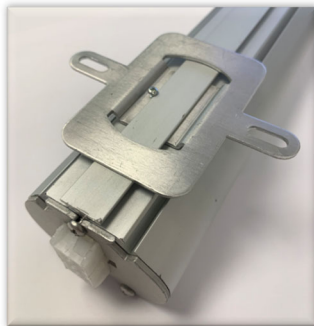


Surface / Adjustable Mount Instructions

★ *It is recommended that 2 mounts are used per every 8' of the Star Link System when used in a Surface or Adjustable Mount application.*

Surface Mount: Slide the surface mount brackets to desired position and fasten the surface mount to the fixture with the set screw provided. Secure the surface mount bracket to the structure with appropriate hardware.

Adjustable Mount: Secure the adjustable mount brackets to the structure using appropriate hardware. The 6-32 cap nuts can be used to adjust the position of the mount along the fixture length.



INSTALLATION INSTRUCTIONS

STARLINK, STARLINK WIDE
MODELS # SL, SLW
REV. 4

Link Series Installation

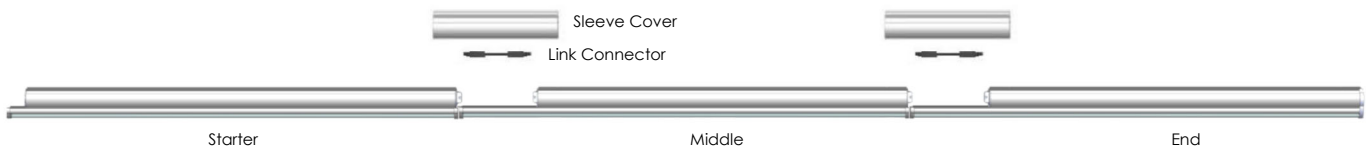
System Overview

MAX LENGTH PER STARLINK RUN

| VOLTAGE | STD/LOW OUTPUT | HIGH OUTPUT |
|---------|----------------|-------------|
| 120-276 | 177 FT | 102 FT |
| 277 | 410 FT | 238 FT |

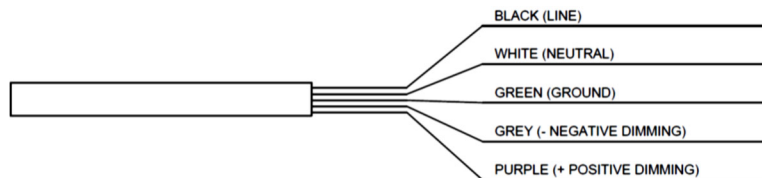
MAX LENGTH PER STARLINK WIDE RUN

| VOLTAGE | STD/LOW OUTPUT |
|---------|----------------|
| 120-276 | 102 FT |
| 277 | 238 FT |



Each run of StarLink includes a starter and end fixture. Runs over 12' or 16' will include middle fixtures to build the run to the requested length. Each middle and end fixture includes a link connector and our proprietary sleeve cover. This sleeve cover ensures straight runs at any length.

1. Power must be turned OFF prior to disconnecting or reconnecting the StarLink fixture
2. Identify the different fixture types that make up each row.
 Starter fixture: stripped wires/cord on one side, connector on the other side.
 Middle fixture: connector on both sides.
 End fixture: connector on one side, closed end cap on the other side
3. Attach the starter fixture to the structure with (2) of the mounting accessories provided. Connect the starter fixture wiring to the line side wiring, using only UL listed wiring devices. Purple and Gray leads are used for 0-10 dimming ONLY. Cap wires if not used (see below). The wiring inside the fixtures is rated 14AWG. Line side wiring connected by the installer must be rated for the load per (NEC) National Electric Code and/or local electric code. *



*If your product is configured to have an EM circuit, EM Battery circuit or a separate circuit for dual switching, the above configuration will include an additional BLUE wire to be terminated on the additional circuit line side wiring.

INSTALLATION INSTRUCTIONS

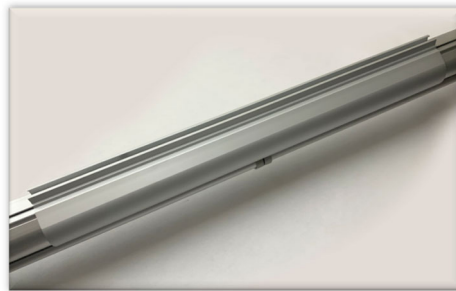
STARLINK, STARLINK WIDE
MODELS # SL, SLW
REV. 4

Link Series Installation (CONTINUED)

4. Support second fixture, either Middle or End depending on row length, and connect fixture 1 to fixture 2 with over-molded ink connector (Fig. 2).



5. For pendant mount fixtures, line up slots in external sleeve with holes in fixture and lock external sleeve to both fixture 1 and fixture 2. The pendant mount sleeve can be used as a mounting point. (Fig. 3). For surface mount fixtures, sleeve cover is not fastened to the fixtures with hardware.



6. Repeat steps 3 through 5 for additional fixtures.
7. Restore power and verify correct operation.