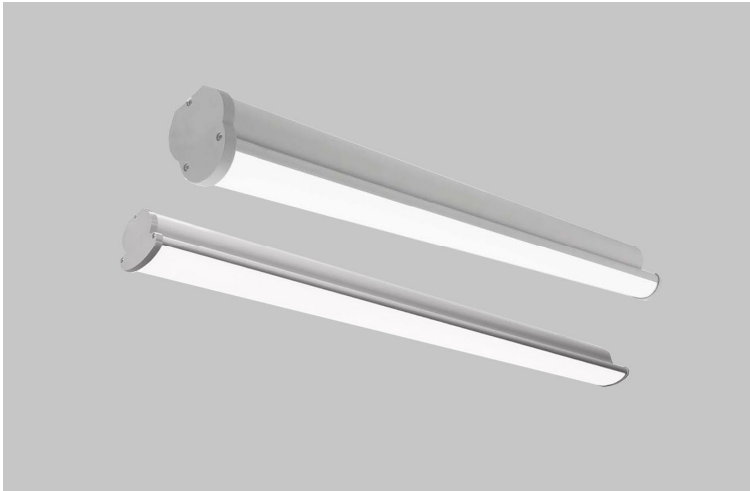













# INSTALLATION INSTRUCTIONS



STARPOWER, STARPOWER WIDE  
MODELS # SP, SPW  
REV. 4



## **WARNING**

-  **THIS PRODUCT MUST BE INSTALLED IN ACCORDANCE WITH THE APPLICABLE INSTALLATION CODE BY A PERSON FAMILIAR WITH THE CONSTRUCTION AND OPERATION OF THE PRODUCT AND THE HAZARDS INVOLVED.**  
*CE PRODUIT DOIT ETRE INSTALLE SELON LE CODE D'INSTALLATION PERTINENT, PAR UNE PERSONNE QUI CONNAIT BIEN LE PRODUIT ET SON FONCTIONNEMENT AINSI QUE LES RISQUES INHERENTS.*
-  **DISCONNECT POWER PRIOR TO ANY INSTALLATION.**  
*DEBRANCHEZ LE COURANT AVANT TOUTE INSTALLATION.*
-  **CAP ALL WIRING CONNECTIONS WITH UL APPROVED WIRE CONNECTORS.**  
*COUVRIR TOUTES LES CABLES AVE DES CONNECTIONS APPROUVES (UL).*
-  **VERIFY SUPPLY VOLTAGE MEETS LUMINAIRE LABEL SPECIFICATIONS.**  
*VERIFIEZ QUE LA TENSION SOIT COMPATIBLE AVEC LES CARACTERISTIQUES DU LUMINAIRE MARQUE SUR LETIQUETTE.*
-  **ALLOW FIXTURE TO COOL BEFORE TOUCHING HEATSINK OR LIGHT SOURCE.**  
*LAISSEZ LE PROJECTEUR REFOIDIR AVANT DE TOUCHER LE RADIATEUR OU LA SOURCE DE LUMIERE.*
-  **DO NOT ATTEMPT TO OPEN OR MAKE REPAIRS INSIDE LUMINAIRE.**  
*NE PAS TENTER DOUVRIRE OU DE FAIRE DES REPARATINS A L'INTERIEUR DU LUMINAIRE.*
-  **AVOID DIRECT VIEWING OF LIGHT SOURCE.**  
*EVITEZ DE REGARDER DIRECTMENT LA SOURCE LUMINEUSE.*
-  **THIS PRODUCT MUS BE INSTALLED BY A QUALIFIED ELECTRICIAN.**  
*CE PRODUIT DOIT ITRE INSTALLE PAR UN ELECTRICIEN QUALIFIE.*
-  **SUITABLE FOR UNDER-CABINET MOUNT.**  
*ADAPTE POUR SOUS-CABINET MOUNT.*
-  **SUITABLE FOR DAMP LOCATION.**  
*ADAOTE POUR DES ENDROITS HUMIDES.*
-  **MIN 105° C SUPPLY CONDUCTORS.**  
*MIN 105° C ALIMENTATION CONDUCTEURS.*

6/13/2019 - PAGE 1

# INSTALLATION INSTRUCTIONS

STARPOWER, STARPOWER WIDE  
MODELS # SP, SPW  
REV. 4

## Provided Parts List

The components have been packed to avoid damage during transit. Inspect the components to confirm there is no physical damage. Do not install damaged components. The carton contains the following:

- ★ StarPower or StarPower Wide Fixture
- ★ Mounting Brackets and Hardware (may be attached to fixture depending on mounting type)
- ★ Installation Manual

## Mounting

Inspect mounting location for damage. Make sure the structure can support the weight of the StarPower fixture. Follow all UL, NEC and minimum load rating guidelines when selecting and installing mounting hardware for the fixture.

- ★ Fixture Weights:
  - StarPower - 4' (8lbs. max) / 8' (16lbs. max)
  - StarPower Wide - 4' (8lbs. max) / 8' (16lbs. max)

## Pendant Mount Instructions

**Pendant Mount:** Pendant Mount Fixtures come standard with adjustable gripper that accepts 1/16" aircraft cable. Adjust gripper location by loosening 6-32 cap nuts and sliding into position anywhere along the top of the fixture. The Pendant Mount bracket also accepts 1/4" threaded rod or chain in lieu of grippers. (FIG. 1)



# INSTALLATION INSTRUCTIONS

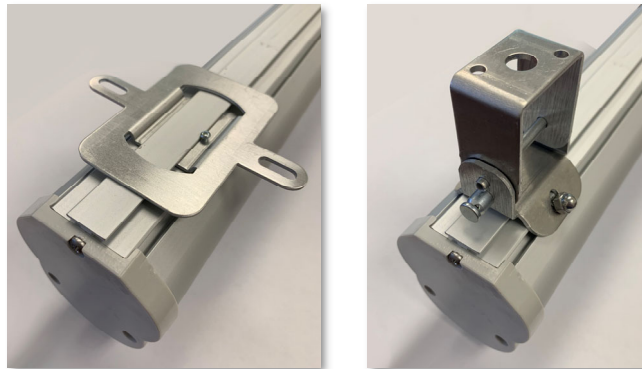
STARPOWER, STARPOWER WIDE  
MODELS # SP, SPW  
REV. 4



## Surface / Adjustable Mount Instructions

**Surface Mount:** Slide the surface mount brackets to desired position and fasten the surface mount to the fixture with the set screw provided. Secure the surface mount bracket to the structure with appropriate hardware.

**Adjustable Mount:** Secure the adjustable mount brackets to the structure using appropriate hardware. The 6-32 cap nuts can be used to adjust the position of the mount along the fixture length.



# INSTALLATION INSTRUCTIONS

STARPOWER, STARPOWER WIDE  
MODELS # SP, SPW  
REV. 4

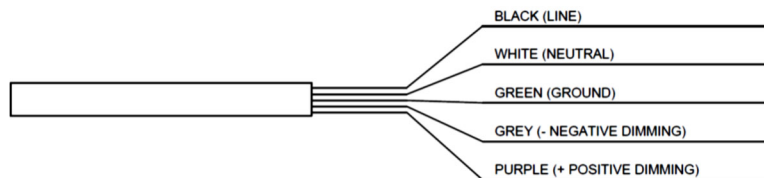


## StarPower Installation

### **External Cord (ACxxx, ALxxx, SM and RM) Installation**

1. Power must be turned OFF prior to disconnecting or reconnecting the StarPower fixture

- If the fixture is not fitted with existing plug, connect fixture wiring to line side wires. Use only UL listed wiring devices. Purple and Gray leads are used for 0-10 dimming ONLY. Cap wires if not used (see below). The wiring inside the fixtures is rated 14AWG. Line side wiring connected by the installer must be rated for the load per (NEC) National Electric Code and/or local electric code. \*
- 2.



\*If your product is configured to have an EM circuit, EM Battery circuit or a separate circuit for dual switching, the above configuration will include an additional BLUE wire to be terminated on the additional circuit line side wiring.

3. Restore power and verify correct operation

# INSTALLATION INSTRUCTIONS

STARPOWER, STARPOWER WIDE  
MODELS # SP, SPW  
REV. 4

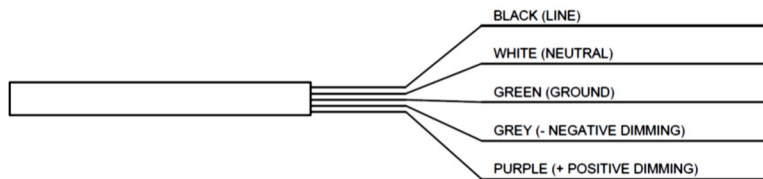


## StarPower Installation (continued)

### Conduit Feed Option (CFT) Installation

1. Power must be turned OFF prior to disconnecting or reconnecting the StarPower fixture
2. Each StarPower fixture, utilizing the CFT option, is provided with fixture leads on one end of the fixture and are fed thru a 7/8" opening in the metal end cap of the fixture.
3. Begin by removing the (3) three screws securing the end cap to access the wiring compartment.
4. Connect conduit to metal end cap at 7/8" hole, ensuring the lock nut is tight.

- Connect fixture wiring to line side wires. Use only UL listed wiring devices. Purple and Gray leads are used for 0-10 dimming ONLY. Cap wires if not used (see below). The wiring inside the fixtures is rated 14AWG. Line side wiring connected by the installer must be rated for the load per (NEC) National Electric Code and/or local electric code. \*
- 5.



\*If your product is configured to have an EM circuit, EM Battery circuit or a separate circuit for dual switching, the above configuration will include an additional BLUE wire to be terminated on the additional circuit mains wiring.

6. After wiring connection are made, tuck the connections and wiring back into the wiring compartment and secure the end cap with the (3) three screws removed earlier.
7. Restore power and verify operation.