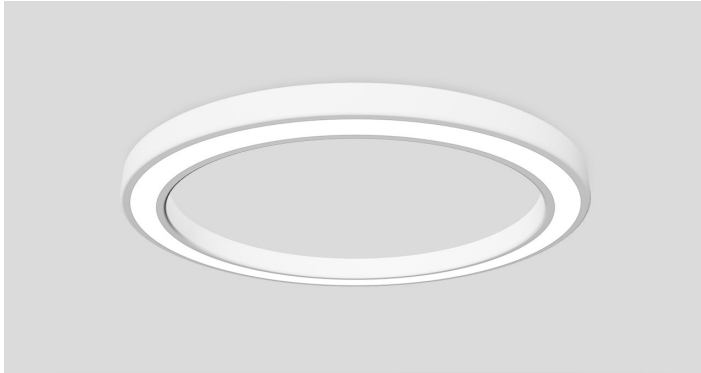


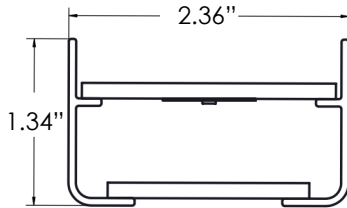
HALO

Hoop Direct

Type:	
Project:	
Rep:	
Order #:	



DIMENSIONS



FEATURES

- An all-new design with seamless direct lensing and seamless aluminum housing
- 2, 3, and 4' diameter fixtures available
- Soft diffuse direct lighting
- Powder coat finishes available in white, black, and silver.
- Custom colors available upon request*
- Approved for dry and damp locations
- 0-10v dimming is standard
- Dim to 1% of output current
- Available in 120v or 277v



LUMENS

Lumens can be specified within the ranges shown below, for the product size specified.

PRODUCT	MAX OUTPUT
HALOD-2	5,000lm
HALOD-3	8,000lm
HALOD-4	11,000lm

ORDERING LOGIC

SERIES	OVERALL DIAMETER	LUMENS	DISTRIBUTION	CCT	CRI	FINISH
HALOD	2=2FT 3=3FT 4=4FT	XX=Lumens	SD=SatinIce Diffuse	30K=3000K 35K=3500K 40K=4000K 50K=5000K <i>Higher CRI / R9 options available</i>	80=80 90=90 (R9 50 min)	PW=Powder coat white PB=Powder coat black PS=Powder coat silver PBR=Powder coat bronze PO=Powder coat other*

MOUNTING**
PCW=Powered Canopy White
PCB=Powered Canopy Black
RSMW=Remote Surface Mount with Canopy, White
RSMB=Remote Surface Mount with Canopy, Black
RIWW=Remote In-wall with Canopy, White
RIWB=Remote In-wall with Canopy, Black

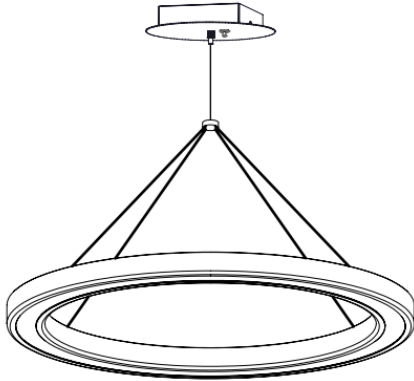
EXAMPLE: HALOD-3-5600-SD-35K-PB-PCB

* Factory to be provided with RAL# or color chip.
** See mounting details on page 2.

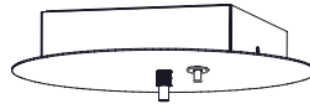
Type:	
Project:	
Rep:	
Order #:	

MOUNTING OPTIONS

PCx (Powered Canopy)

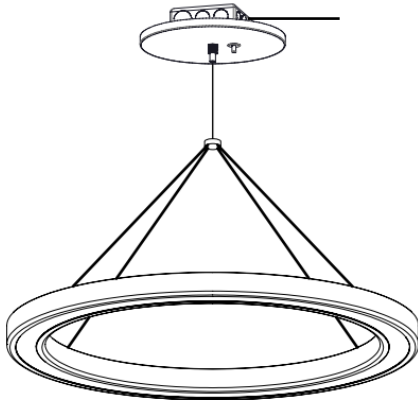


Ceiling Mount Power
(Feed)

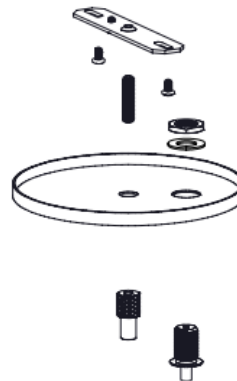


RSMx (Remote Surface Mount with Canopy)

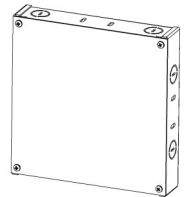
Low Voltage to Remote (RSM)



Ceiling Mount Remote Power
(Feed)

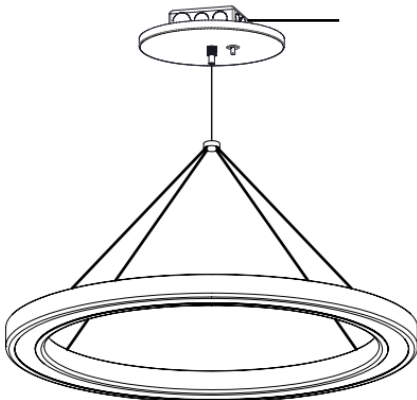


Remote Surface
Mount Power Feed
Enclosure

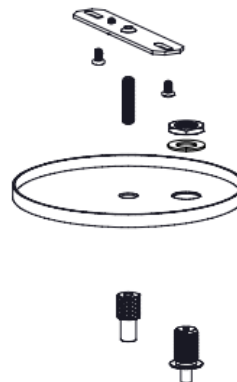


RIWx (Remote In-wall with Canopy)

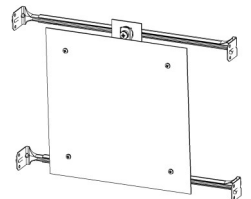
Low Voltage to Remote (RIW)



Ceiling Mount Remote Power
(Feed)



Remote In-Wall
Mount Power Feed
Enclosure

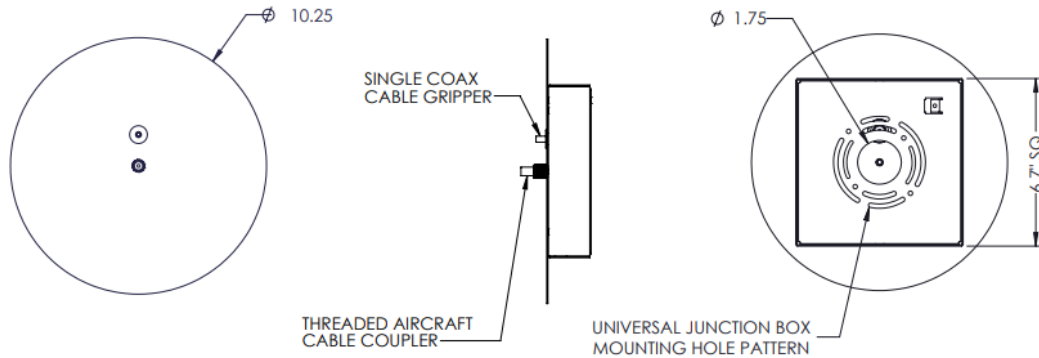


Type:	
Project:	
Rep:	
Order #:	

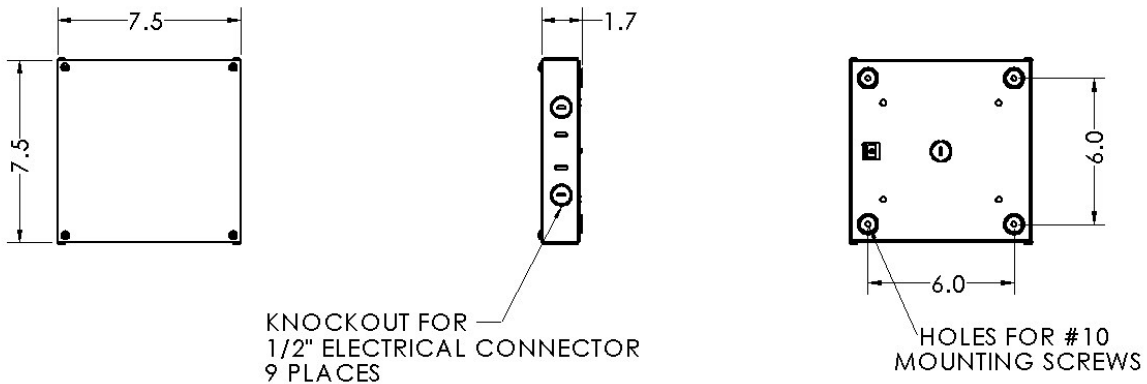
CANOPY AND ENCLOSURES :

Enclosures can contain up to two 55 Watt, Class P, 0-10 Constant Current Drivers with Short Circuit & Over Temperature Protection and Smooth Dimming to 1%.

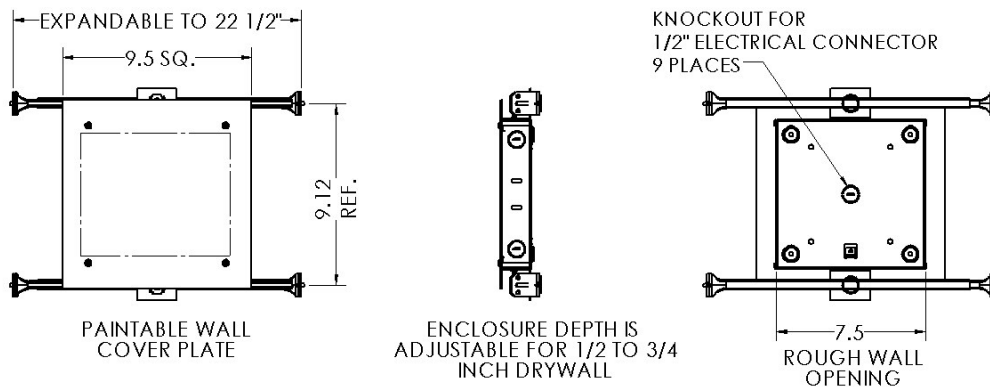
PCx (Powered Canopy)



RSMx (Remote Surface Mount with Canopy)



RIWx (Remote In-wall with Canopy)



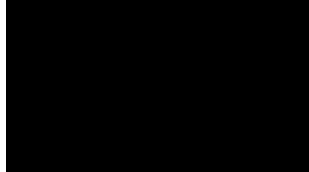
Type:	
Project:	
Rep:	
Order #:	

FINISHES

STANDARD FINISHES



WHITE MINI TEXTURE



BLACK MINI TEXTURE

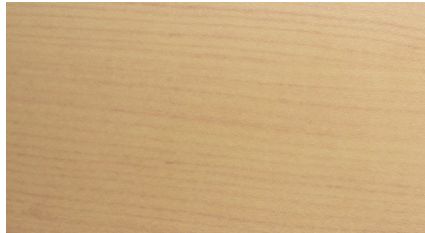


SILVER SPARKLE TEXTURE

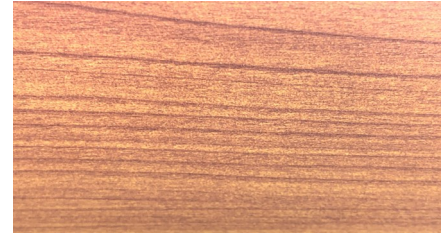
PREMIUM STOCK FINISHES



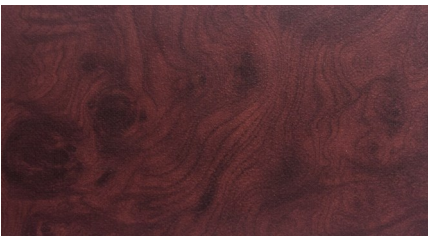
PSF001 (WOOD#1)



PSF002 (WOOD#2)



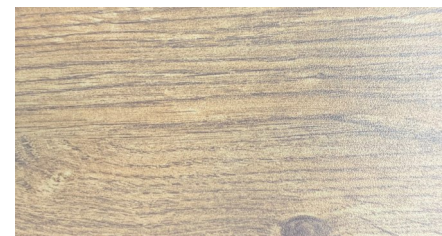
PSF003 (WOOD#3)



PSF004 (WOOD#4)



PSF005 (WOOD#5)



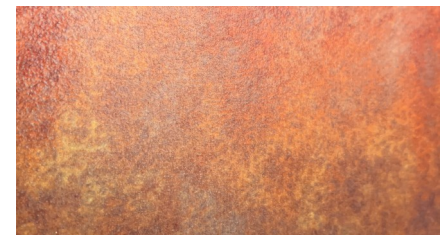
PSF006 (WOOD#6)



PSF007 (STONE #1)



PSF008 (STONE #2)



PSF009 (METAL #1)

NOTE: Products specified with Premium Stock Finishes (PSF) and all other custom finishes (PO) will incur a set up fee and will also add an extended lead time to your project. It is not to be assumed that these finishes are stocked in our warehouse, but rather, are readily available to us for your project.

Type:	
Project:	
Rep:	
Order #:	

SPECIFICATIONS

Housing

Constructed of #3003 extruded aluminum formed into 2', 3' or 4' diameter. All sizes assembled in once piece.

Color

Colors for the housing are available in a powder coated white, black, and silver. Consult factory for custom colors.

Source

Four color temperature options (3000K, 3500K, 4000K and 5000K) — all within 2.5 MacAdam ellipses.

Certification

Packaging

Sustainably manufactured outside cardboard box and biodegradable, protective poly-foam luminaire inserts.

Environment

Suitable for dry and damp locations.
Operating temp.: -40°C to +50°C
-40°F to +122°F

Lensing

1/8" thick impact resistant acrylic lensing.

Control

Compatible with external daylight/occupancy sensors by default.

Dimming Driver

Universal Lighting Technologies (ULT) Everline series of LED drivers allows tunable output currents to achieve infinite configurations of output. UL Class 2 recognized. 0-10v interface can be wired as Class 1 or Class 2 circuit. Included 2.5Kw ring and wave overcurrent protection, isolation of each individual output and a fully potted driver to protect from heat and vibration. Power factor <.93

WARRANTY

5-year limited warranty.

Note: Actual performance may differ as a result of installation environment and final application. All values are design or typical values, measured under laboratory conditions, at 25°C (77°F).