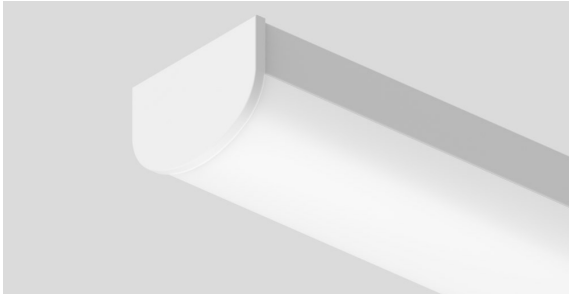
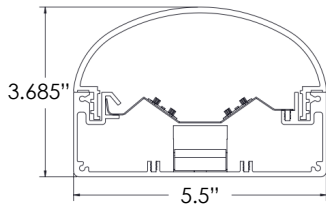


Type:	
Project:	
REP/Agent:	
Order #:	



DIMENSIONS



FEATURES

- 2', 3', 4', 6' and 8' individual units
- Fixtures can be linked together for continuous rows
- Soft diffused direct lighting
- Textured outdoor powder coat finishes available in white, black and silver.
- Premium finishes also available
- 0-10V dimming is standard**
- Dim to 10% of output current is standard
- 90 CRI (R9 50min) available
- CA Title 24 / JA8 installation compatible
- Wet Location rated



ORDERING LOGIC

STS	LENGTH	LUMENS PER FOOT	SD	CCT	CRI
STS	2 = 2FT 3 = 3FT 4 = 4FT 6 = 6FT 8 = 8FT xx = Run length Sxx=Symmetric Run Length	350 = 350 LPF 500 = 500 LPF 750 = 750 LPF 1000 = 1000 LPF xxxx= Custom LPF	SD = SatinIce Diffuse	30K = 3000K 35K = 3500K 40K = 4000K 50K = 5000K	80=80 90=90 (R9 50 min)

FINISH	MOUNTING	U	ELECTRICAL	OPTIONS
STANDARD PW = Powder Coat White PB = Powder Coat Black PS = Powder Coat Silver PREMIUM RALxxxx= Powder Coat RAL xxxx (Gloss Finish) PSFx=Prem Stock Finish (See Pg. 8) CUSTOM PO=Powder Other	SURFACE MOUNTS SM(T) = Surface Mount (Top-fed power) SM(E) = Surface Mount (End-fed power) SM(S) = Surface Mount (Side-fed power) 45-Degree Surface Mount 45SM(T)= Surface Mount (Top-fed power) 45SM(E)= Surface Mount (End-fed power) 45SM(S)= Surface Mount (Side-fed power) STEMS WITH CANOPY KITS STEMWXX= Stem White, xx" STEMBXX= Stem Black, xx"	U = 120-277	1C=Single Circuit MC=Multiple Circuits <i>(multiple switch legs across run length)</i> EC=Emergency Circuit <i>(separate power drops for EC fixtures)</i>	BATTERIES #EMB10 = 10W EM Battery (# indicates quantity) SURGE PROTECTOR SRG = Surge Protector Sensors

EXAMPLE: V-40-750-SD-35K-80-PW-SM(E)-U-1C-EMB10

**Motion sensor option removes dimming ability

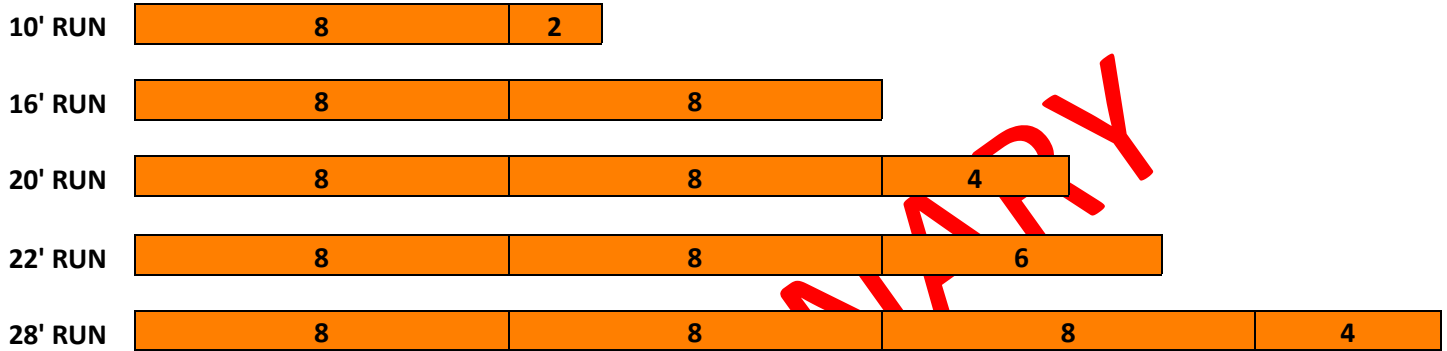
Type:	
Project:	
REP/Agent:	
Order #:	

CONTINUOUS RUN

Continuous runs are configured with 2', 3', 4', 6' and 8' sections up to 50' in total length.

Runs are constructed with as many 8' sections as possible and supplemented with smaller sections to reach the desired length. If a different configuration is needed to meet an aesthetic requirement, please indicate this on the P.O. when placing an order.

Examples of some standard continuous runs over 8' are as follows:



PRELIMINARY

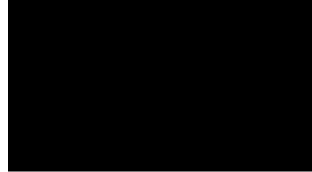
Type:	
Project:	
REP/Agent:	
Order #:	

FINISHES

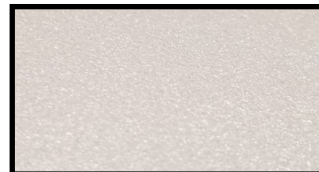
STANDARD FINISHES



WHITE MINI TEXTURE



BLACK MINI TEXTURE



SILVER

Custom finishes (PO) will incur a set up fee and will add an extended lead time to your project.

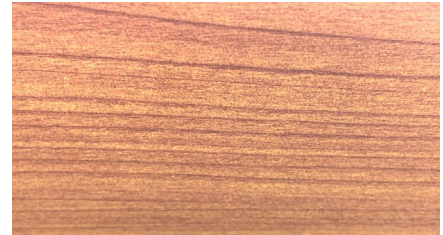
PREMIUM STOCK FINISHES



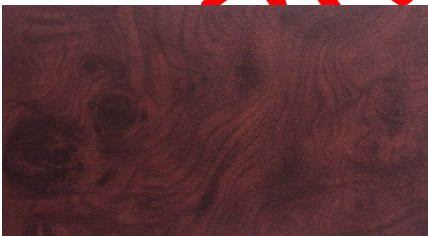
PSF001 (WOOD#1)



PSF002 (WOOD#2)



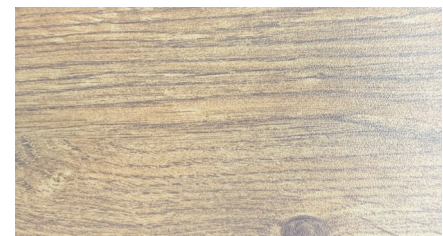
PSF003 (WOOD#3)



PSF004 (WOOD#4)



PSF005 (WOOD#5)



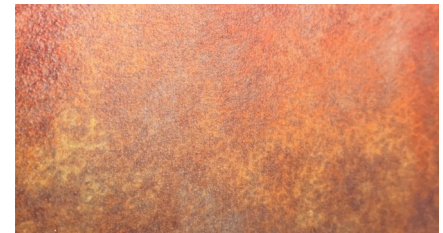
PSF006 (WOOD#6)



PSF007 (STONE #1)



PSF008 (STONE #2)



PSF009 (METAL #1)

NOTE: A minimal impact to lead times will apply to products specified with Premium Stock Finishes (PSF). It is not to be assumed that these finishes are stocked in our warehouse, but rather, are readily available to us for your project.

All other custom finishes (PO) will incur a set up fee and will add an extended lead time to your project.

Type:	
Project:	
REP/Agent:	
Order #:	

SPECIFICATIONS

Housing

Nominal 3.7" x 5.5" x 0.080 thick aluminum housing

Color

Colors for the housing are available in a powder coated white, black silver. Consult factory for custom colors.

Luminaire Length

2', 3', 4', 6' or 8' lengths are available for a single stand-alone section. Using contractor provided conduit, 4' and 8' sections can be joined to form longer rows up to 50'.

Lensing

0.125" Thick Impact resistant outdoor (F1) rated polycarbonate lensing.

Source

Variable lumen packages are available in four color temperature options (3000K, 3500K, 4000K and 5000K) — all within 2.5 MacAdam ellipses.

Certification

Intertek cETLus Wet Location Listed. RoHS (Restriction of Hazardous Substances) and Buy American Act Compliant.

Battery

Bodine battery providing up to 1200lm(10W) for 90 minutes. UL924 listed. Class 2 compliant. Meets Title 20 CEC (California Energy Commission) efficiency standards.

Environment

Suitable for dry, damp, and wet locations.
Operating temp.: -40°C to +50°C
-40°F to +122°F

Dimming Driver

Packaging

Sustainably manufactured outside cardboard box and biodegradable, protective poly-foam luminaire inserts.

WARRANTY

5-year limited warranty. Complete warranty terms can be located at:

https://starteklightingamerica.com/wp-content/uploads/2019/11/Hydro_Beam_Warranty.pdf

Note: Actual performance may differ as a result of installation environment and final application. All values are design or typical values, measured under laboratory conditions, at 25°C (77°F).

PRELIMINARY