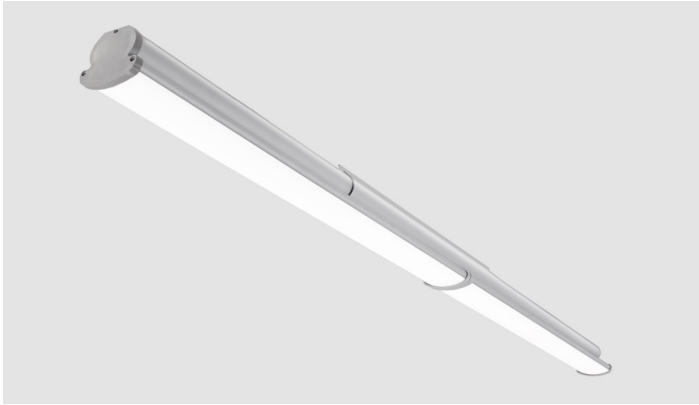
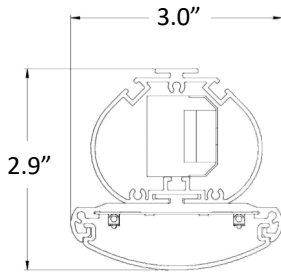


Type:	
Project:	
REP/Agent:	
Order #:	



## DIMENSIONS



## FEATURES

- Proprietary linking design for straight rows
- Continuous row configurations available up to 171' at 277V and 103' at 120V
- Plug-and-play installation
- Two standard lumen packages
- Efficacy up to 155 lm/W
- Soft diffuse direct lighting
- Clear anodize finish
- Custom powder coat colors available upon request
- Approved for dry and damp locations
- 0-10v dimming is standard
- Dim to 1% of output current is standard
- CA Title 24 / JA8 installation compatible



## LUMEN PACKAGES

Based on 3500K CCT. Other CCT available.

MODEL	LUMENS	INPUT WATTS	Lm/W
SLW-8-S-35K	12,540	87	144
SLW-8-H-35K	28,050	174	144

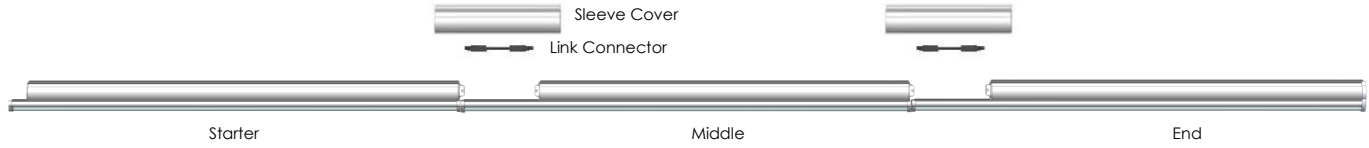
## ORDERING LOGIC

SLW	SD	CCT	CRI	FINISH		
SERIES	LENGTH	OUTPUT	DISTRIBUTION	CCT	CRI	FINISH
SLW	XX= Run Length	S= Standard H= High xxx= Custom LPF	SD= SatinIce Diffused	30K= 3000K 35K= 3500K 40K= 4000K 50K= 4000K	80= 80 90= 90 (R9 50 min)	<b>STANDARD</b> CA= Clear Anodize <b>CUSTOM</b> PO= Powder Other
MOUNTING**		VOLTAGE		OPTIONS		
<b>CABLES WITH CANOPY KITS</b> ACW05= White Cord 5' ACW10= White Cord 10' ACB05= Black Cord 5' ACB10= Black Cord 10' <b>CABLES WITH LOOPS</b> ALW10= White Cord 10' ALB10= Black Cord 10' <b>SURFACE MOUNTS</b> SMW= Surface Mount, 10' White Cord SMB= Surface Mount, 10' Black Cord <b>ROTATIONAL MOUNTS</b> RMW= Rotational Mount, 10' White Cord RMB = Rotational Mount, 10' Black Cord		U=120-277V C= 347V		<b>SPECIALTY DRIVERS</b> (Standard driver is 0-10V, dim to 1% output current) DT1= eldoLED EcoDrive Dim to 1% (0-10V) DTZ= eldoLED SoloDrive Dim to 0% (0-10V) PSRD= Philips Sensor Ready (DALI) Driver LDE1= Lutron Hi-Lume EcoSystem LED driver with Soft-on, Fade-to-Black dimming <b>BATTERIES</b> #EMB6= 6W EM Battery } # indicates quantity, not compatible with 2' fixtures #EMB10=10W EM Battery } <b>SENSORS</b> DM= Daylight/Motion Sensor <b>OTHER</b> PF= Quick Connect Power Feed (Consult Factory) EC= Emergency Circuit (Consult Factory)		

**EXAMPLE:** SLW-40-S-SD-35K-80-CA-ALW10-U-1EMB10

Type:	
Project:	
REP/Agent:	
Order #:	

## ROW CONFIGURATIONS



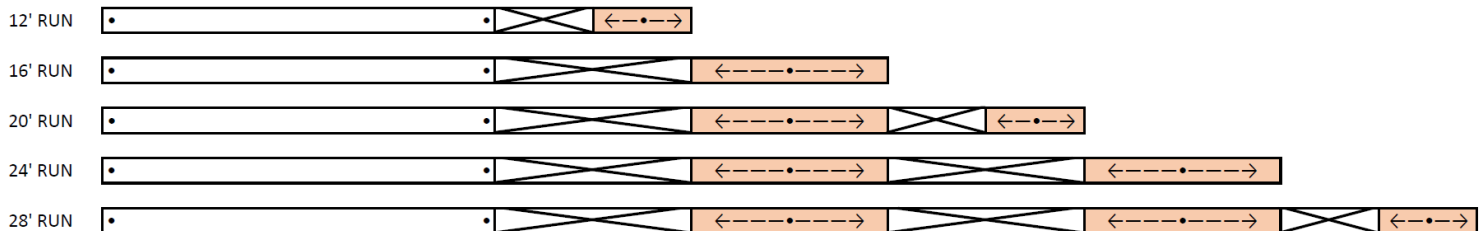
Each run of StarPower Link Wide includes a starter and end fixture. Runs over 12' or 16' will include middle fixtures to build the run to the requested length. Each middle and end fixture includes a link connector and our proprietary sleeve cover. This sleeve cover ensures straight runs at any length.

Standard runs over 8' are as follows:

12' RUN	8	4		
16' RUN	8	8		
20' RUN	8	8	4	
24' RUN	8	8	8	
28' RUN	8	8	8	4

## MOUNTING LOCATIONS

Each starter fixture will be provided with (2) mounting supports. Each additional fixture will be provided with (1) support which can be located anywhere along the 2nd half of the fixture (highlighted):



## WIRING STANDARDS (Per NEC Requirements)

Each fixture will be manufactured with 300v, 14ga AWG mains wiring. Dependent on the length of the run, fixtures ordered with cords will be provided with the following (based on 15w/ft):

Up to 80'	18/3-22/2
Up to 80' w/NL	18/4-22/2
Over 80'	14/5
Over 80' w/NL	14/6

\*347V fixtures will be provided with 600V cables as required

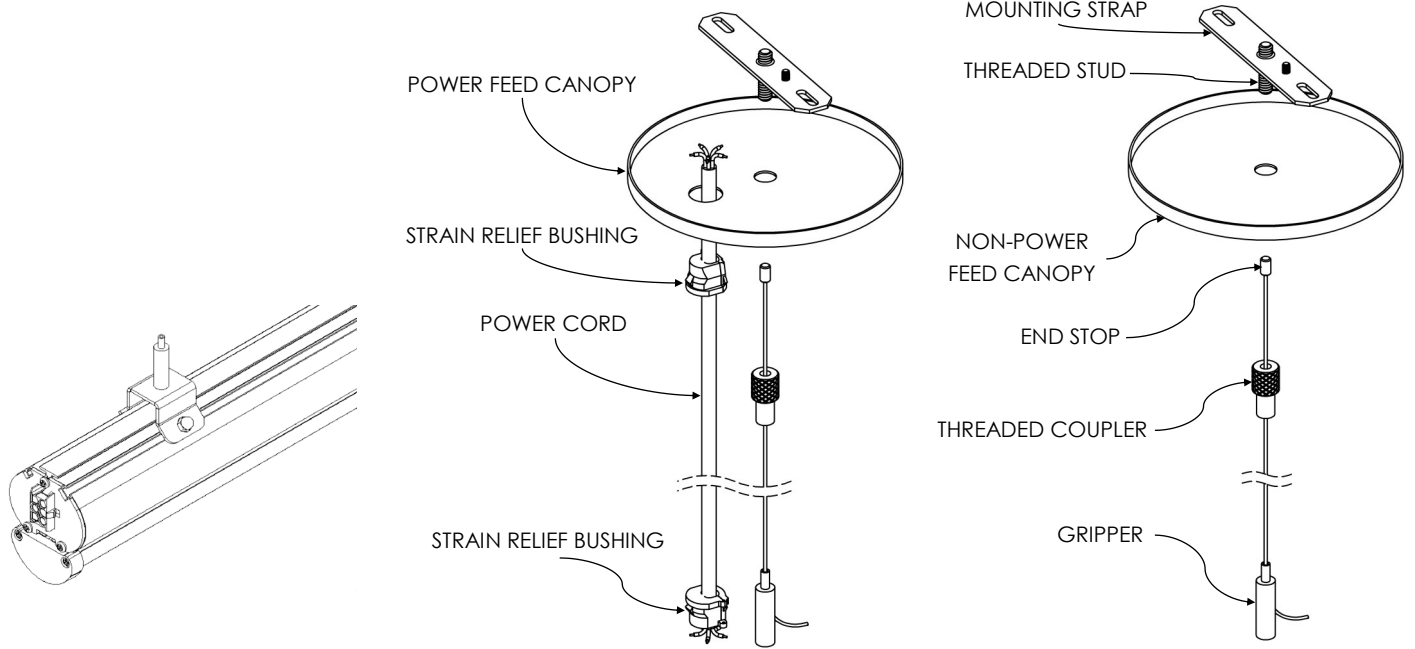
## MAXIMUM RUN LENGTHS

	120V	277V
LOW/STANDARD OUTPUT	103'	171'
HIGH OUTPUT	74'	119'

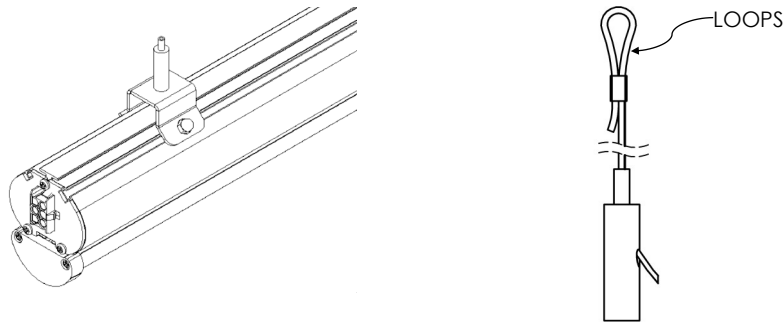
Type:	
Project:	
REP/Agent:	
Order #:	

## MOUNTING OPTIONS

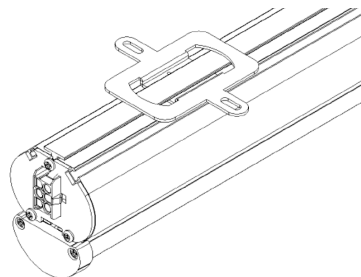
### ACxxx (Aircraft Cable with Canopy) - Drywall, Solid, Tile (On-Grid), Tile (Off-Grid)



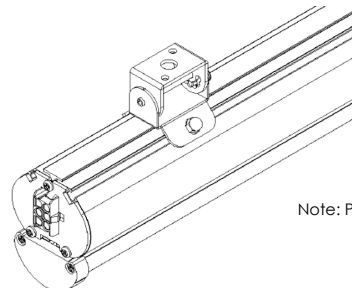
### ALxxx (Aircraft Cable with Loops)



### SMx (Surface Mount)



### RMx (Rotational Mount)

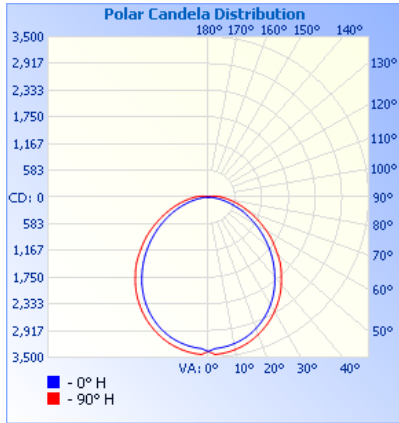


Note: Pendants by others.

Type:	
Project:	
REP/Agent:	
Order #:	

## PERFORMANCE

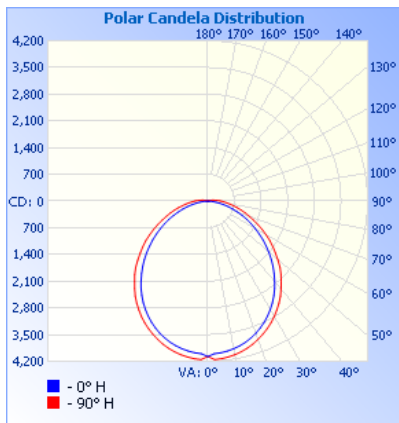
### STANDARD OUTPUT - 80+ CRI



Model	Lumens	Watts	LPW
SLW-4-S-30K	6,100	47	129
SLW-4-S-35K	6,270	47	133
SLW-4-S-40K	6,440	47	137
SLW-4-S-45K	6,610	47	141
SLW-4-S-50K	6,780	47	144

Model	Lumens	Watts	LPW
SLW-8-S-30K	12,197	87	140.0
SLW-8-S-35K	12,540	87	143.9
SLW-8-S-40K	12,883	87	147.8
SLW-8-S-45K	13,226	87	151.8
SLW-8-S-50K	13,569	87	155.7

### HIGH OUTPUT - 80+ CRI



Model	Lumens	Watts	LPW
SLW-4-H-35K	11,558	90	127.9
SLW-4-H-40K	11,819	90	130.8
SLW-4-H-45K	12,081	90	133.7
SLW-4-H-50K	12,342	90	136.6

Model	Lumens	Watts	LPW
SLW-8-H-35K	23,116	116	140.0
SLW-8-H-40K	23,638	116	143.2
SLW-8-H-45K	24,162	116	146.4
SLW-8-H-50K	24,684	116	149.6

Type:	
Project:	
REP/Agent:	
Order #:	

## SPECIFICATIONS

### Housing

Nominal 3" x 3" dual housings of continuous extruded 6063 T5 aluminum .

### Color

The housing color is available in clear anodize. Custom powder coat options are available. Consult factory.

### Luminaire Length

Fixtures are available in 4' and 8' standard lengths. Sections can be joined to form longer rows using the StarLink locking sleeve (see dimensions chart on this page).

### Source

Three standard lumen packages are available in four color temperature options (3000K, 3500K, 4000K and 5000K) — all within 3 MacAdam ellipses.

### Dimming Driver

Universal Lighting Technologies (ULT) Everline series of LED drivers allows tunable output currents to achieve infinite configurations of output. UL Class 2 recognized. 0-10v interface can be wired as Class 1 or Class 2 circuit. Included 2.5Kw ring and wave overcurrent protection, isolation of each individual output and a fully potted driver to protect from heat and vibration. Power factor <.93

### Certification

Intertek cETLus Listed. RoHS (Restriction of Hazardous Substances) and Buy American Act compliant.

### Environment

Suitable for dry and damp locations.  
Operating temp.: -40°C to +50°C  
-40°F to +122°F

### Battery (optional)

Philips Bodine lithium ion battery providing up to 780lm(6W) or up to 1300lm(10W) for 90 minutes. UL924 listed. Class 2 compliant. Meets Title 20 CEC (California Energy Commission) efficiency standards.

### Packaging

Sustainably manufactured outside cardboard box and biodegradable, protective poly-foam luminaire inserts.

## COMPANION PRODUCTS

### StarPower Wide



## DIMENSIONS

MODEL	NOMINAL LENGTH	LUMINAIRE LENGTH	RACEWAY LENGTH	WEIGHT
<b>SLW-4x (starter)</b>	4ft.	48.0" (1,219mm)	46.15" (1,172mm)	8 lbs. max (3.6 kg)
<b>SLW-4x (mid/end)</b>	4ft.	48.0" (1,219mm)	39.6" (1,005mm)	8 lbs. max (3.6 kg)
<b>SLW-8x (starter)</b>	8ft.	96.0" (2,348mm)	94.15" (2,391mm)	16 lbs. max (6.4 kg)
<b>SLW-8x (mid/end)</b>	8ft.	96.0" (2,348mm)	87.6" (2,225mm)	16 lbs. max (6.4 kg)

## WARRANTY

5-year limited warranty. Complete warranty terms can be located at:

[http://www.starteklightingamerica.com/images/pdf/warranty/StarPower\\_Warranty.pdf](http://www.starteklightingamerica.com/images/pdf/warranty/StarPower_Warranty.pdf)

Note: Actual performance may differ as a result of installation environment and final application. All values are design or typical values, measured under laboratory conditions, at 25°C (77°F) .