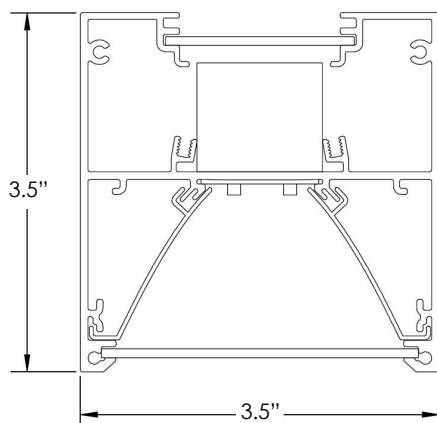


# BEAM DIRECT



## DIMENSIONS



## ORDERING LOGIC

WS-BEAMD						
SERIES	LENGTH	LUMENS PER FOOT	DISTRIBUTION	CCT	CRI	FINISH
WS-BEAMD	xx= Run Length	350= 350 LPF 500= 500 LPF 750= 750 LPF 1000= 1000 LPF XXX= Custom LPF	SD= SatinIce Diffuse WD= Wide Diffuse	30K= 3000K 35K= 3500K 40K= 4000K	80= 80	<u>STANDARD</u> PW= Powder Coat White PB= Powder Coat Black
MOUNTING		VOLTAGE	ELECTRICAL		OPTIONS	
<u>CABLES WITH CANOPY KITS</u> ACW05= White Cord 5' ACW10= White Cord 10' ACB05= Black Cord 5' ACB10= Black Cord 10'		U= 120-277	1C= Single Circuit		<u>BATTERIES</u> #EMB6= 6W EM Battery (Bodine BSL06T3)(# indicates quantity) #EMB10=10W EM Battery (Bodine BSL10T3)(# indicates quantity) Only available on individual units for 5 Day turnaround.	
<u>CABLES WITH LOOPS</u> ALW10= White Cord 10' ALB10= Black Cord 10'						

EXAMPLE: WS-BEAMD-40-625-WD-35K-80-PW-ACW10-U-1C

Type:	
Project:	
REP/Agent:	
Order #:	



## 5 DAY TURNAROUND

## FEATURES

- ★ Shipment up to 500' in 5 working days
- ★ Continuous lensing standard- runs up to 200'
- ★ Extruded aluminum single piece housing
- ★ Individual or continuous rows consisting of 2', 4', 6' and 8' fixtures
- ★ Linear runs with proprietary joiner design
- ★ Light levels can be set at the factory
- ★ Efficacy up to 135 lm/W
- ★ Soft diffuse direct lighting
- ★ Textured powder coat finishes available in white & black
- ★ Approved for dry and damp locations
- ★ 0-10v dimming is standard
- ★ Dim to 1% of output current is standard



**Declare.**

## LUMEN PACKAGES

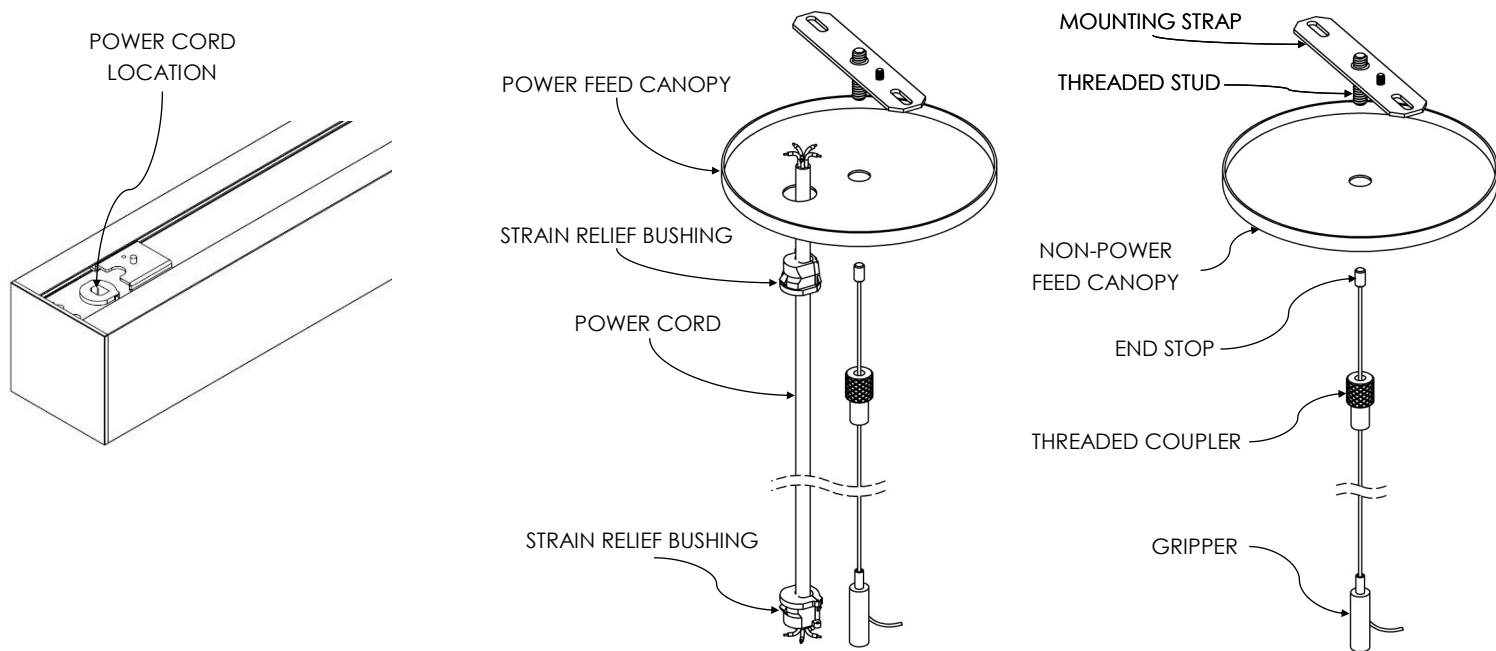
Based on 3500K CCT. Other CCT available.

MODEL	LUMENS	INPUT WATTS	Lm/W
WS-BEAMD-4-750-WD-35K-80	3,000	24	123
WS-BEAMD-8-750-WD-35K-80	6,000	47	128

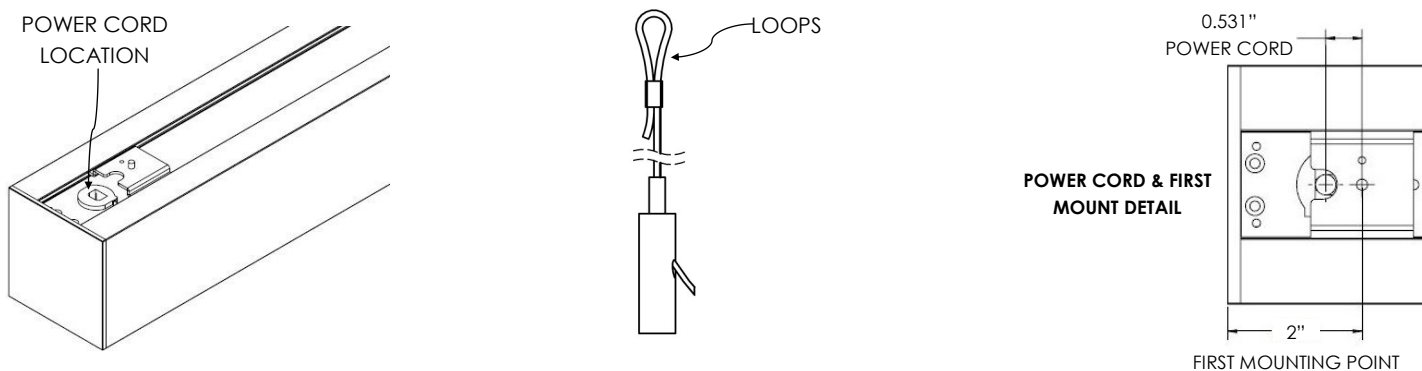
# BEAM DIRECT

## MOUNTING OPTIONS

**ACxxx (Aircraft Cable with Canopy) - Drywall, Solid, Tile (On-Grid), Tile (Off-Grid)**



**ALxxx (Aircraft Cable with Loops)**



## SPECIFICATIONS

### Housing

Nominal 3.5" x 3.5" x .075" thick housing of continuous extruded 6063 T5 aluminum.

### Color

Colors for the housing are available in a powder coated white and black.

### Luminaire Length

2', 4', 6' & 8' lengths are available for a single stand-alone section. Using internal joiners, these sections can be joined to form longer runs.

### End Caps

Injection molded flat end caps are mechanically attached with no exposed fasteners to enhance architectural aesthetic and prevent light leak.

### Source

Lumen packages are available in three color temperature options (3000K, 3500K and 4000K) - all within 3 MacAdam ellipses.

### Certification

Intertek cETLus Listed. RoHS (Restriction of Hazardous Substances) and Buy American Act compliant.

### Lensing

0.080" thick impact resistant acrylic lensing.

### Packaging

Sustainably manufactured outside cardboard box and biodegradable, protective poly-foam luminaire inserts.

### Environment

Suitable for dry and damp locations.  
Operating temp.: -40°C to +50°C  
-40°F to +122°F

### Dimming Driver (Integral Driver)

Constant current programmable LED driver. UL listed, class P, 0-10V, dim to 1% of output current. 2.5KV ring wave surge protection and >.90 power factor.

### Warranty

[http://www.starteklightingamerica.com/images/pdf/warranty/Beam\\_Series\\_Warranty.pdf](http://www.starteklightingamerica.com/images/pdf/warranty/Beam_Series_Warranty.pdf)