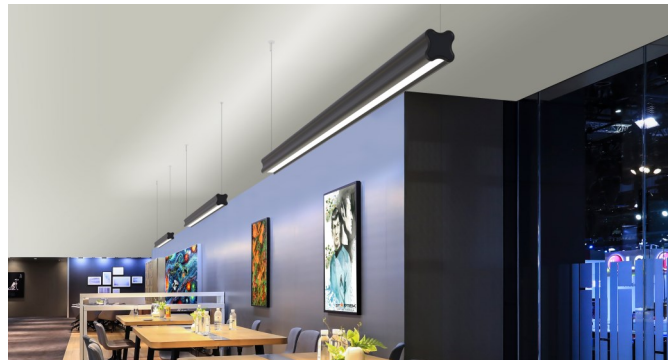
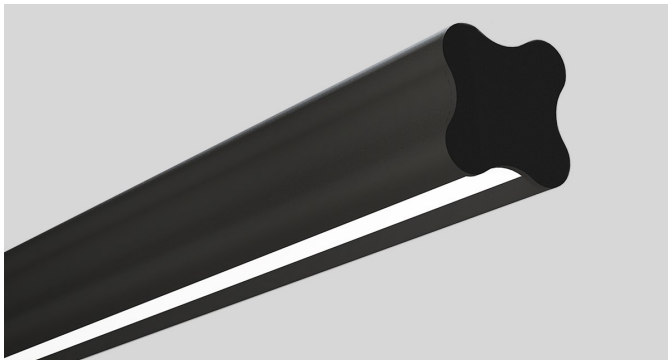
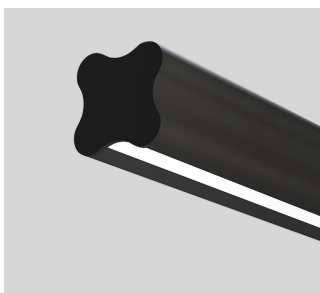


Type:	
Project:	
REP/Agent:	
Order #:	

CLOVER BEAM DIRECT/INDIRECT



ENDCAP OPTIONS



FL = Flat

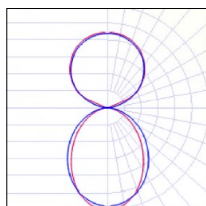


RD = Round

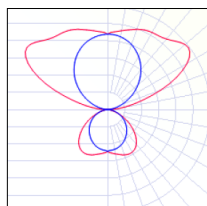
FEATURES

- ★ Continuous lensing standard– runs up to 200'
- ★ Extruded aluminum single piece housing
- ★ Standard 2', 4', 6' and 8' units, or continuous rows
- ★ Linear runs with proprietary joiner design
- ★ Light levels can be set at the factory
- ★ Efficacy up to 140 lm/W
- ★ Soft diffuse direct lighting
- ★ Textured powder coat finishes available in white, black, and silver
- ★ Premium finishes also available
- ★ Approved for dry and damp locations
- ★ 0-10v dimming is standard
- ★ Dim to 1% of output current is standard
- ★ 90 CRI (R9 50 min) available
- ★ CA Title 24 / JA8 installation compatible
- ★ Consult factory for TM21, TM30, LM79 and LM80

DISTRIBUTION

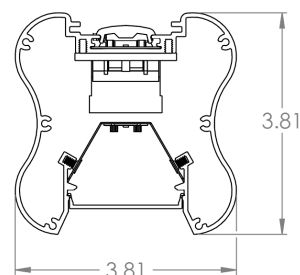


Direct: SD= SatinIce Diffuse
Indirect: CL= Clear



Direct: WD= Wide Diffuse
Indirect: BW= Batwing

DIMENSIONS



Type:	
Project:	
REP/Agent:	
Order #:	

CLOVER BEAM DIRECT/INDIRECT

CLVRDI					
SERIES	LENGTH	DIRECT LUMENS PER FOOT	INDIRECT LUMENS PER FOOT	DIRECT DISTRIBUTION	INDIRECT DISTRIBUTION
CLVRDI	xx= Run Length Sxx= Symmetric Run Length	350= 350 LPF 500= 500 LPF 750= 750 LPF 1000= 1000 LPF XXX= Custom LPF	350= 350 LPF 500= 500 LPF 750= 750 LPF 1000= 1000 LPF XXX= Custom LPF	SD= SatinIce Diffuse WD= Wide Diffuse WW= Wall Wash	CL= Clear Lens BW= Batwing

CCT	CRI	FINISH	MOUNTING	VOLTAGE	ELECTRICAL
27K= 2700K 30K= 3000K 35K= 3500K 40K= 4000K 50K= 5000K TW= Tunable white ¹ (2700-6500K)	80= 80 90= 90 (R9 50 min)	<u>STANDARD</u> PW= Powder Coat White PB= Powder Coat Black PS= Powder Coat Silver <u>PREMIUM</u> RALxxx= Powder Coat RAL xxxx (Gloss Finish) PSFx= Prem Stock Finish <u>CUSTOM</u> PO= Powder Other See pg. 6 for standard and premium options.	<u>CABLES WITH CANOPY KITS</u> ACW05= White Cord 5' ACW10= White Cord 10' ACB05= Black Cord 5' ACB10= Black Cord 10' <u>CABLES WITH LOOPS</u> ALW10= White Cord 10' ALB10= Black Cord 10' <u>STEM WITH CANOPY KITS</u> STEMWxx= Stem White, xx" STEMBxx= Stem Black, xx"	U= 120-277 C= 347	1C= Single Circuit 2C= Separate D/I Circuits (separate control of direct and indirect) MC= Multiple Circuits (multiple switch legs across run length) EC= Emergency Circuit (separate power drops for EC fixtures) GTD= Generator Transfer Device

ENDCAPS	OPTIONS
FL = Flat RD = Round	<p><u>SPECIALTY DRIVERS</u> (Standard driver is 0-10V, dim to 1% output current)</p> <p>DT1= eldoLED EcoDrive Dim to 1% (0-10V) DTZ= eldoLED SoloDrive Dim to 0.1% (0-10V) PSRD= Philips Sensor Ready (DALI) Driver LDE1= Lutron Hi-Lume EcoSystem LED driver with Soft-on, Fade-to-Black TW-A= Tunable White, 0-10v² TW-EL= eldoLED DUALdrive Tunable White (DALI)² LD2=Lutron DALI 2 Digital Tunable White driver with 1% dimming² RD-xx'-xxxxx= Remote Driver 120V-277V Consult Factory</p> <p><u>BATTERIES</u></p> <p>#EMB6= 6W EM Battery (Iota/Bodine) #EMB10= 10W EM Battery (Iota/Bodine) #FCEMB10= 10W EM Battery (Factory Choice) #FCEMB14= 14W EM Battery (Factory Choice)</p> <p><u>SENSORS</u></p> <p>DMxx%= Daylight/Motion Sensor (xx%= % Min. Dimming) VDO= Lutron Vive Integral fixture control (RF w/ daylight and occupancy) AWN-R-W= Lutron Athena Wireless Node (RF only)³ - White Finish AWN-R-B= Lutron Athena Wireless Node (RF only)³ - Black Finish NLA= Acuity nLight Air WVL= Cooper Wavelinx</p>

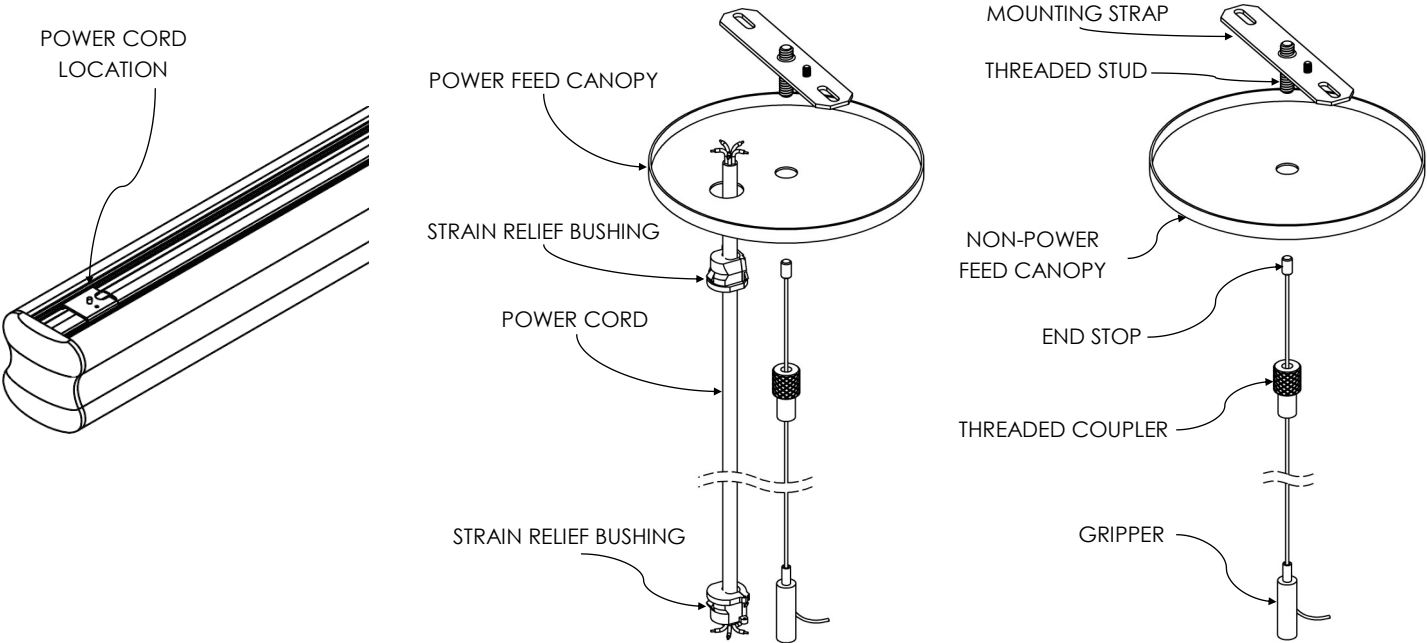
¹ Tunable White Driver must be specified in options
² 50 Watt Max. Dual driver required for higher fixture wattage
³ D4i driver for static & DALI-2 Type 8 for tunable.

EXAMPLE: CLVRDI-40-750-SD-35K-80-PW-ACW10-U-1C-1EMB10

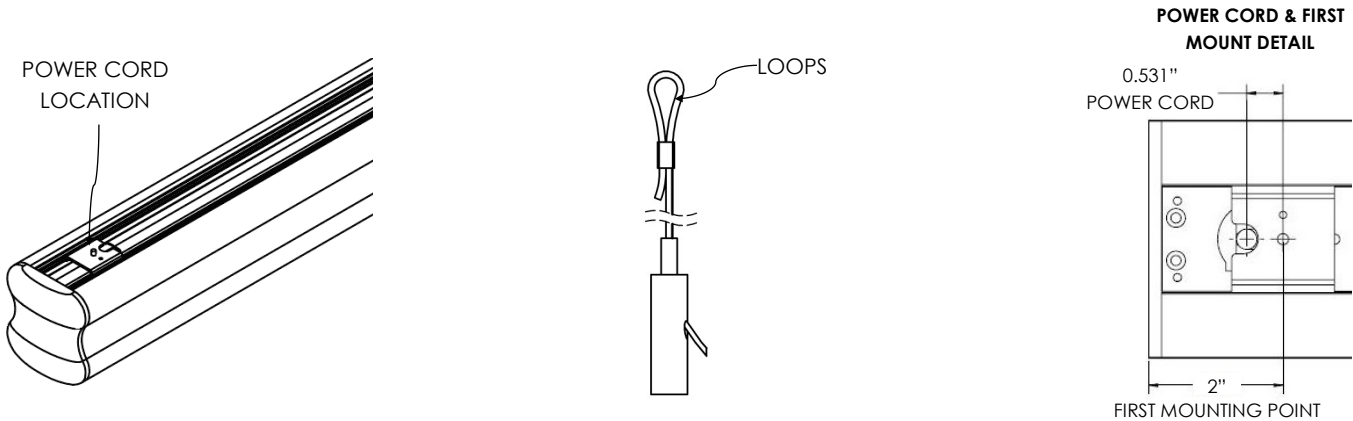
CLOVER DIRECT/INDIRECT

MOUNTING OPTIONS

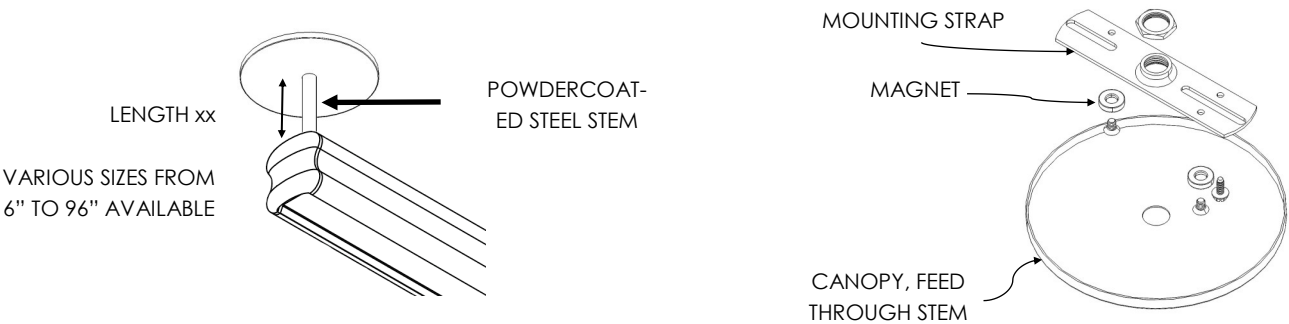
ACxxx (Aircraft Cable with Canopy) - Drywall, Solid, Tile (On-Grid), Tile (Off-Grid)



ALxxx (Aircraft Cable with Loops)



STEMWxx, STEMBxx (Stem Mount)



ROW CONFIGURATIONS

xx (Run Length)

The standard construction of run lengths follows the logic of the table below. Consult factory for additional information.

Run lengths always start with the longest fixture and receives the power feed.

		Total Length																																							
		2	3	4	5	6	7	8	9	10	11	12	13	14	15	16	17	18	19	20	21	22	23	24	25	26	27	28	29	30	31	32	33	34	35	36	37	38	39	40	
# of Sections	2	1																																							
	3		1																																						
	4			1					1	1	1	1					1	1	1	1					1	1	1	1					1	1	1	1					
	5				1				1					1				1				1				1				1				1				1			
	6					1					1				1				1				1				1				1				1				1		
	7						1					1				1				1				1				1				1				1				1	
	8							1					1	1	1	1	2	1	1	1	2	2	2	2	3	2	2	2	3	3	3	3	4	3	3	3	4	4	4	4	5

NOTE: Fixtures in continuous runs are available in 6" increments. Consult factory for smaller increments.

Sxx (Symmetric Run)

The construction of Sxx (y') is to build with equal length fixtures. The xx indicates the run length. The y' indicates the fixture length used to create the run. Please indicate this on your P.O. when placing your order.

S12' (2')	2'	2'	2'	2'	2'	2'
S12' (3')	3'	3'	3'	3'		
S12' (4')	4'	4'	4'	4'		
S12' (6')	6'	6'	6'	6'		

MOUNTING LOCATIONS

Each starter or individual fixture will be provided with (2) mounting supports (●). Each additional fixture will be provided with (1) support which can be located anywhere along the 2nd half of the fixture (highlighted below):

Examples of continuous run mounting locations are as follows:

The diagram illustrates five different running track configurations, each with a total length of 120 feet. The segments are defined by circles representing the start and end of a segment. The layouts are as follows:

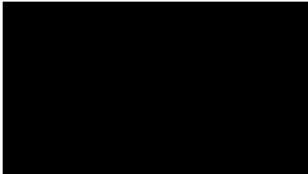
- 12' RUN:** A single segment of 12 feet.
- 16' RUN:** A single segment of 16 feet.
- 20' RUN:** A single segment of 20 feet.
- 24' RUN:** A single segment of 24 feet.
- 28' RUN:** A single segment of 28 feet.

The segments are labeled with their lengths in feet ('). The segments are shown in a horizontal line, with the total length of the track indicated by the number of segments and their individual lengths.

STANDARD FINISHES



WHITE MINI TEXTURE



BLACK MINI TEXTURE

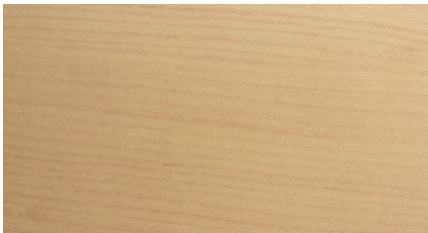


SILVER SPARKLE TEXTURE

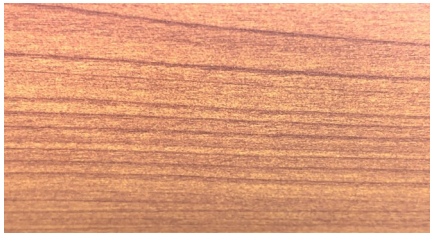
PREMIUM STOCK FINISHES



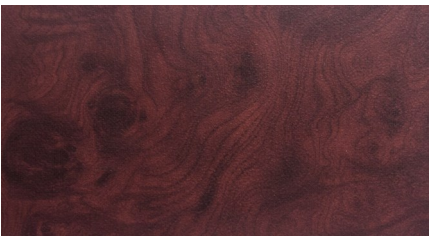
PSF001 (WOOD#1)



PSF002 (WOOD#2)



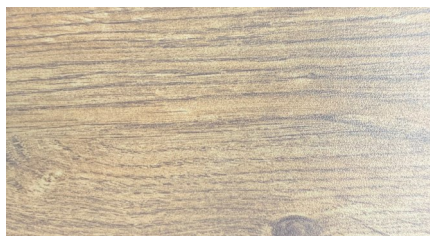
PSF003 (WOOD#3)



PSF004 (WOOD#4)



PSF005 (WOOD#5)



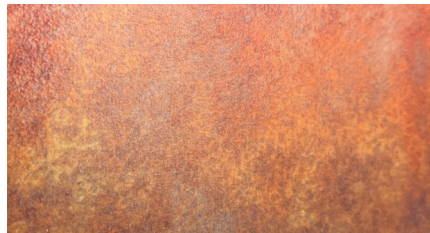
PSF006 (WOOD#6)



PSF007 (STONE #1)



PSF008 (STONE #2)



PSF009 (METAL #1)

NOTE: A minimal impact to lead times will apply to products specified with Premium Stock Finishes (PSF). It is not to be assumed that these finishes are stocked in our warehouse, but rather, are readily available to us for your project. All other custom finishes (PO) will incur a set up fee and will add an extended lead time to your project.

CLOVER DIRECT/INDIRECT

SPECIFICATIONS

Housing

Nominal 3.8" x 3.8" x .075" thick housing of continuous extruded 6063 T5 aluminum.

Color

Colors for the housing are available in a powder coated white, black, silver, and woodgrain with end cap to match. Consult factory for custom colors.

Luminaire Length

2', 4', 6' or 8' lengths are available for a single stand-alone section. Using internal joiners, these sections can be joined to form longer rows.

End Caps

End caps are mechanically attached with no exposed fasteners to enhance architectural aesthetic and prevent light leak.

Source

Lumen packages are available in four color temperature options (3000K, 3500K, 4000K and 5000K) — all within 3 MacAdam ellipses.

Certification

Intertek cETLus Listed. RoHS (Restriction of Hazardous Substances) and Buy American Act compliant.

Battery

Lithium ion battery providing up to 780lm(6W) or up to 1300lm(10W) for 90 minutes. UL924 listed. Class 2 compliant. Meets Title 20 CEC (California Energy Commission) efficiency standards.

Lensing

0.080" thick impact resistant acrylic lensing.

Environment

Suitable for dry and damp locations.
Operating temp.: -40°C to +50°C
-40°F to +122°F

Dimming Driver (Integral Driver)

UL listed, class P (0-10V) dimming driver with programmable current for configurable fixture lumen outputs.
2.5 Kv overcurrent protection
Power factor >.9

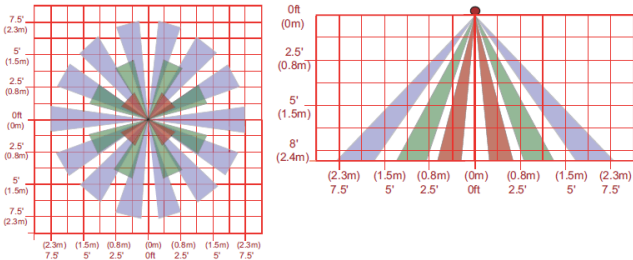
Packaging

Sustainably manufactured outside cardboard box and biodegradable, protective poly-foam luminaire inserts.

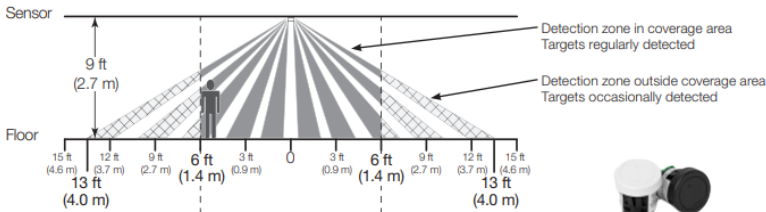
CONTROL

Sensor

Wattstopper FS-205 v2 Low Voltage PIR. Integrated photosensor for hold-off daylighting control. 24VDC operating voltage. Adjustable time delay (30 seconds to 30 minutes).



Wireless Node



COMPANION PRODUCTS

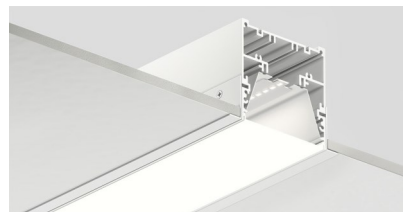
Beam Direct/Indirect



Beam Surface Mount



Recessed Beam



WARRANTY

5-year limited warranty. Complete warranty terms can be located at:

http://www.starteklightingamerica.com/images/pdf/warranty/Beam_Series_Warranty.pdf

Note: Actual performance may differ as a result of installation environment and final application.
All values are design or typical values, measured under laboratory conditions, at 25°C (77°F).