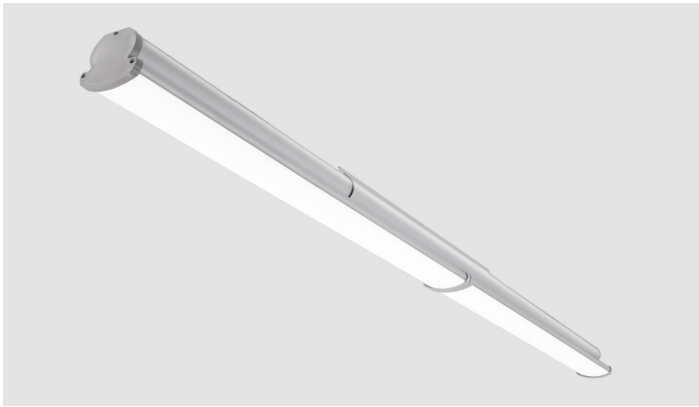
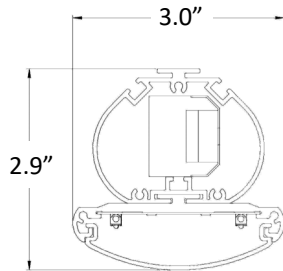


Type:	
Project:	
REP/Agent:	
Order #:	



## DIMENSIONS



## ORDERING LOGIC

SLW	-		-		-	SD	-		-		-		-		-		-		-
SERIES	-	LENGTH	-	OUTPUT	-	DISTRIBUTION	-	CCT	-	CRI	-	FINISH	-		-		-		-
SLW	-	XX= Run Length	-	S= Standard H= High xxx= Custom LPF	-	SD= SatinIce Diffused	-	30K= 3000K 35K= 3500K 40K= 4000K 50K= 4000K	-	80= 80 90= 90 (R9 50 min)	-	<u>STANDARD</u> CA= Clear Anodize  <u>CUSTOM</u> PO= Powder Other	-		-		-		-
MOUNTING**					-	VOLTAGE		-	OPTIONS										-
<u>CABLES WITH CANOPY KITS</u>					-	U=120-277V		-	<u>SPECIALTY DRIVERS</u> (Standard driver is 0-10V, dim to 1% output current)										-
ACW05= White Cord 5'					-	C= 347V		-	DT1= eldoLED EcoDrive Dim to 1% (0-10V)										-
ACW10= White Cord 10'					-			-	DTZ= eldoLED SoloDrive Dim to 0% (0-10V)										-
ACB05= Black Cord 5'					-			-	PSRD= Philips Sensor Ready (DALI) Driver										-
ACB10= Black Cord 10'					-			-	LDE1= Lutron Hi-Lume EcoSystem LED driver with Soft-on, Fade-to-Black dimming										-
<u>CABLES WITH LOOPS</u>					-			-	<u>BATTERIES</u> (# indicates quantity)										-
ALW10= White Cord 10'					-			-	#EMB6= 6W EM Battery (Iota/Bodine)										-
ALB10= Black Cord 10'					-			-	#EMB10=10W EM Battery (Iota/Bodine)										-
<u>SURFACE MOUNTS</u>					-			-	<u>SENSORS</u>										-
SMW= Surface Mount, 10' White Cord					-			-	DM= Daylight/Motion Sensor										-
SMB= Surface Mount, 10' Black Cord					-			-	<u>OTHER</u>										-
<u>ROTATIONAL MOUNTS</u>					-			-	PF= Quick Connect Power Feed (Consult Factory)										-
RMW= Rotational Mount, 10' White Cord					-			-	EC= Emergency Circuit (Consult Factory)										-
RMB = Rotational Mount, 10' Black Cord					-			-											-

**EXAMPLE:** SLW-40-S-SD-35K-80-CA-ALW10-U-1EMB10

## FEATURES

- Proprietary linking design for straight rows
- Continuous row configurations available up to 171' at 277V and 103' at 120V
- Plug-and-play installation
- Two standard lumen packages
- Efficacy up to 155 lm/W
- Soft diffuse direct lighting
- Clear anodize finish
- Custom powder coat colors available upon request
- Approved for dry and damp locations
- 0-10v dimming is standard
- Dim to 1% of output current is standard
- CA Title 24 / JA8 installation compatible



Intertek



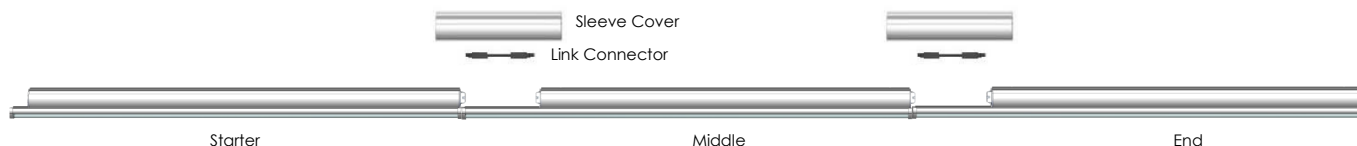
## LUMEN PACKAGES

Based on 3500K CCT. Other CCT available.

MODEL	LUMENS	INPUT WATTS	Lm/W
SLW-8-S-35K	12,540	87	144
SLW-8-H-35K	23,638	165	144

Type:	
Project:	
REP/Agent:	
Order #:	

## ROW CONFIGURATIONS



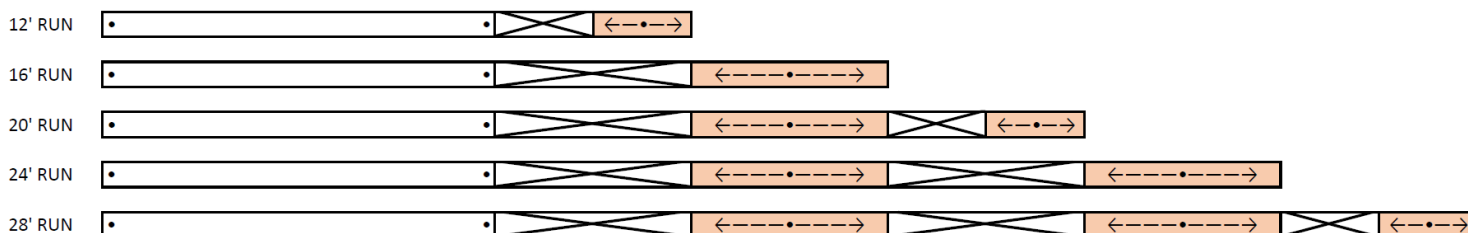
Each run of StarPower Link Wide includes a starter and end fixture. Runs over 12' or 16' will include middle fixtures to build the run to the requested length. Each middle and end fixture includes a link connector and our proprietary sleeve cover. This sleeve cover ensures straight runs at any length.

Standard runs over 8' are as follows:

12' RUN	8	4		
16' RUN	8	8		
20' RUN	8	8	4	
24' RUN	8	8	8	
28' RUN	8	8	8	4

## MOUNTING LOCATIONS

Each starter fixture will be provided with (2) mounting supports. Each additional fixture will be provided with (1) support which can be located anywhere along the 2nd half of the fixture (highlighted):



## WIRING STANDARDS (Per NEC Requirements)

Each fixture will be manufactured with 300v, 14ga AWG mains wiring.

Dependent on the length of the run, fixtures ordered with cords will be provided with the following (based on 15w/ft):

Up to 80'	18/3-22/2
Up to 80' w/NL	18/4-22/2
Over 80'	14/5
Over 80' w/NL	14/6

\*347V fixtures will be provided with 600V cables as required

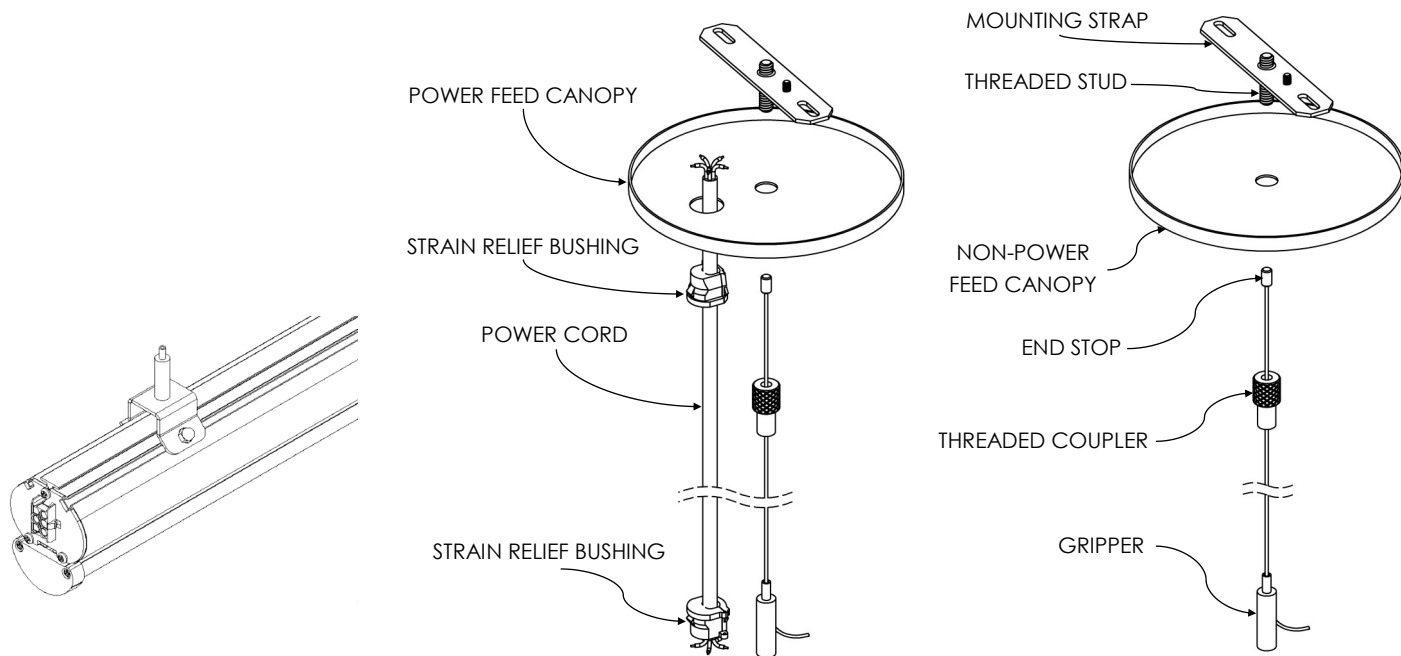
## MAXIMUM RUN LENGTHS

	120V	277V
LOW/STANDARD OUTPUT	103'	171'
HIGH OUTPUT	74'	119'

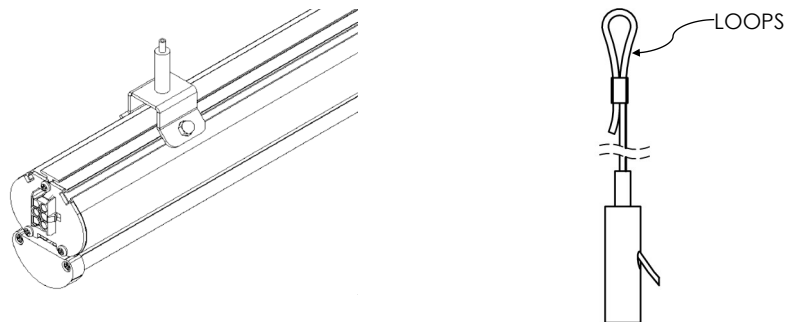
Type:	
Project:	
REP/Agent:	
Order #:	

## MOUNTING OPTIONS

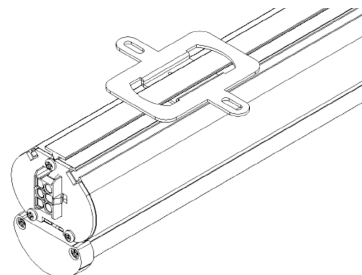
### ACxxx (Aircraft Cable with Canopy) - Drywall, Solid, Tile (On-Grid), Tile (Off-Grid)



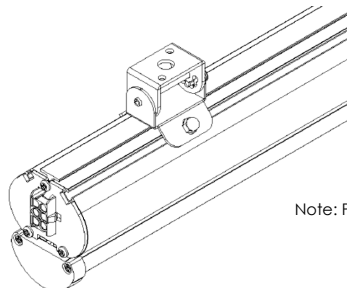
### ALxxx (Aircraft Cable with Loops)



### SMx (Surface Mount)



### RMx (Rotational Mount)

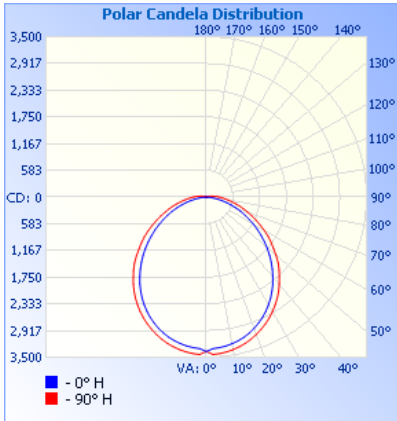


Note: Pendants by others.

Type:	
Project:	
REP/Agent:	
Order #:	

## PERFORMANCE

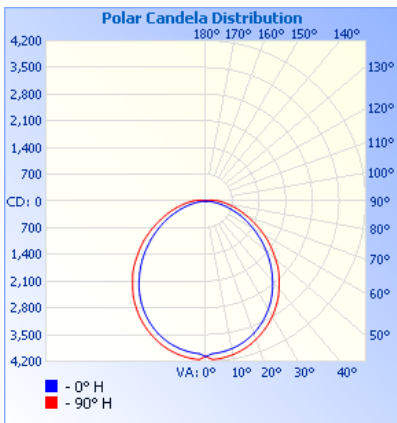
### STANDARD OUTPUT - 80+ CRI



Model	Lumens	Watts	LPW
SLW-4-S-30K	6,100	47	129
SLW-4-S-35K	6,270	47	133
SLW-4-S-40K	6,440	47	137
SLW-4-S-50K	6,780	47	144

Model	Lumens	Watts	LPW
SLW-8-S-30K	12,197	87	140.0
SLW-8-S-35K	12,540	87	143.9
SLW-8-S-40K	12,883	87	147.8
SLW-8-S-50K	13,569	87	155.7

### HIGH OUTPUT - 80+ CRI



Model	Lumens	Watts	LPW
SLW-4-H-30K	11,558	90	127.9
SLW-4-H-35K	11,819	90	130.8
SLW-4-H-40K	12,081	90	133.7
SLW-4-H-50K	12,342	90	136.6

Model	Lumens	Watts	LPW
SLW-8-H-30K	23,116	165	140.0
SLW-8-H-35K	23,638	165	143.2
SLW-8-H-40K	24,162	165	146.4
SLW-8-H-50K	24,684	165	149.6

Type:	
Project:	
REP/Agent:	
Order #:	

## SPECIFICATIONS

### Housing

Nominal 3" x 3" dual housings of continuous extruded 6063 T5 aluminum.

### Color

The housing color is available in clear anodize. Custom powder coat options are available. Consult factory.

### Luminaire Length

Fixtures are available in 4' and 8' standard lengths. Sections can be joined to form longer rows using the StarLink locking sleeve (see dimensions chart on this page).

### Source

Three standard lumen packages are available in four color temperature options (3000K, 3500K, 4000K and 5000K) — all within 3 MacAdam ellipses.

### Dimming Driver

Universal Lighting Technologies (ULT) Everline series of LED drivers allows tunable output currents to achieve infinite configurations of output. UL Class 2 recognized. 0-10v interface can be wired as Class 1 or Class 2 circuit. Included 2.5Kw ring and wave overcurrent protection, isolation of each individual output and a fully potted driver to protect from heat and vibration. Power factor <.93

### Certification

Intertek cETLus Listed. RoHS (Restriction of Hazardous Substances) and Buy American Act compliant.

### Environment

Suitable for dry and damp locations.

Operating temp.: -40°C to +50°C  
-40°F to +122°F

### Battery

Lithium ion battery providing up to 780lm(6W) or up to 1300lm(10W) for 90 minutes. UL924 listed. Class 2 compliant. Meets Title 20 CEC (California Energy Commission) efficiency standards.

### Packaging

Sustainably manufactured outside cardboard box and biodegradable, protective poly-foam luminaire inserts.

## COMPANION PRODUCTS

### StarPower Wide



## DIMENSIONS

MODEL	NOMINAL LENGTH	LUMINAIRE LENGTH	RACEWAY LENGTH	WEIGHT
SLW-4x (starter)	4ft.	48.0" (1,219mm)	46.15" (1,172mm)	8 lbs. max (3.6 kg)
SLW-4x (mid/end)	4ft.	48.0" (1,219mm)	39.6" (1,005mm)	8 lbs. max (3.6 kg)
SLW-8x (starter)	8ft.	96.0" (2,348mm)	94.15" (2,391mm)	16 lbs. max (6.4 kg)
SLW-8x (mid/end)	8ft.	96.0" (2,348mm)	87.6" (2,225mm)	16 lbs. max (6.4 kg)

## WARRANTY

5-year limited warranty. Complete warranty terms can be located at:

[http://www.starteklightingamerica.com/images/pdf/warranty/StarPower\\_Warranty.pdf](http://www.starteklightingamerica.com/images/pdf/warranty/StarPower_Warranty.pdf)

Note: Actual performance may differ as a result of installation environment and final application. All values are design or typical values, measured under laboratory conditions, at 25°C (77°F).