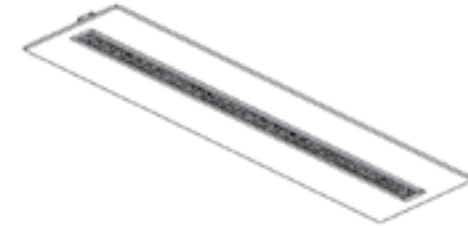


INSTALLATION INSTRUCTIONS



THIS PRODUCT MUST BE INSTALLED IN ACCORDANCE WITH THE APPLICABLE INSTALLATION CODE BY A PERSON FAMILIAR WITH THE CONSTRUCTION AND OPERATION OF THE PRODUCT AND THE HAZARDS INVOLVED.
CE PRODUIT DOIT ETRE INSTALLE SELON LE CODE D'INSTALLATION PERTINENT, PAR UNE PERSONNE QUI CONNAIT BIEN LE PRODUIT ET SON FONCTIONNEMENT AINSI QUE LES RISQUES INHERENTS.
DISCONNECT POWER PRIOR TO ANY INSTALLATION.
DEBRANCHEZ LE COURANT AVANT TOUTE INSTALLATION.
CAP ALL WIRING CONNECTIONS WITH UL APPROVED WIRE CONNECTORS.
COUVRIR TOUTES LES CABLES AVE DES CONNECTIONS APPROUVES (UL).
VERIFY SUPPLY VOLTAGE MEETS LUMINAIRE LABEL SPECIFICATIONS.
VERIFIEZ QUE LA TENSION SOIT COMPATIBLE AVEC LES CARACTERISTIQUES DU LUMINAIRE MARQUE SUR LETIQUETTE.
ALLOW FIXTURE TO COOL BEFORE TOUCHING HEATSINK OR LIGHT SOURCE.
LAISSEZ LE PROJECTEUR REFOIDIR AVANT DE TOUCHER LE RADIATEUR OU LA SOURCE DE LUMIERE.
DO NOT ATTEMPT TO OPEN OR MAKE REPAIRS INSIDE LUMINAIRE.
NE PAS TENTER DOUVIRIR OU DE FAIRE DES REPARATINS A L'INTERIEUR DU LUMINAIRE.
AVOID DIRECT VIEWING OF LIGHT SOURCE.
EVITEZ DE REGARDER DIRECTMENT LA SOURCE LUMINEUSE.
THIS PRODUCT MUST BE INSTALLED BY A QUALIFIED ELECTRICIAN.
CE PRODUIT DOIT ITRE INSTALLE PAR UN ELECTRICIEN QUALIFIE.
SUITABLE FOR DAMP LOCATION.
ADAOTE POUR DES ENDROITS HUMIDES.
MIN 105° C SUPPLY CONDUCTORS.
MIN 105° C ALIMENTATION CONDUCTEURS.



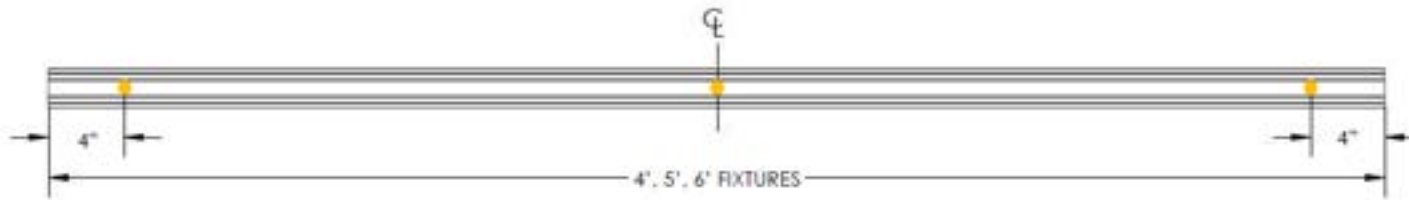
RECESSED SCUPLTURA

Note: All pictures shown are of Recessed Sculptura

INSTALLATION INSTRUCTIONS

Mounting Locations: (SFY/SF) & (CBY/CB)

Mounting locations (●) vary due to length. Views below show top of fixtures and their hole location. For hard ceilings, we offer two types of options. A threaded rod mount, or a screw mount. Please see below of mounting locations as these vary based on length of the fixture.

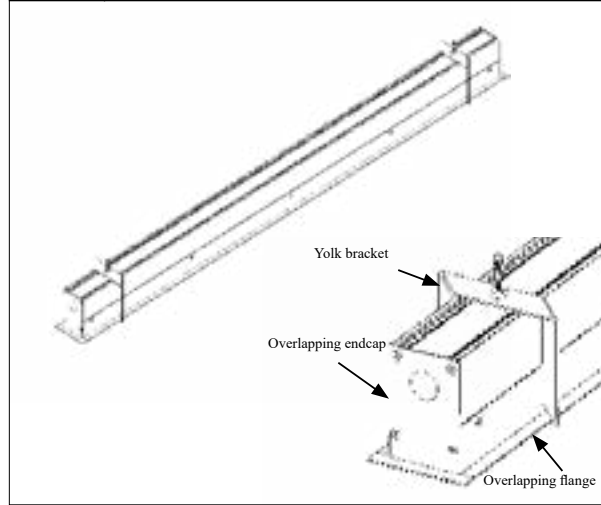


NOTE: Hole size at mounting locations is $\varnothing.266"$.

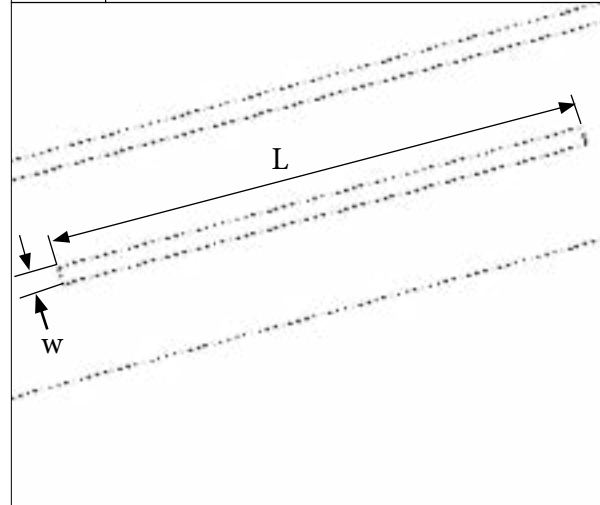
INSTALLATION INSTRUCTIONS

Individual Drywall w/Cosmetic Bezel (CBY/CB)

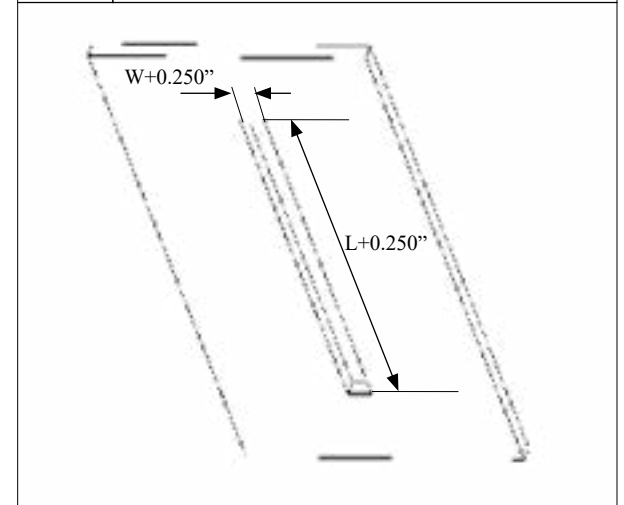
1 Power must be turned off prior to disconnecting or reconnecting fixture.



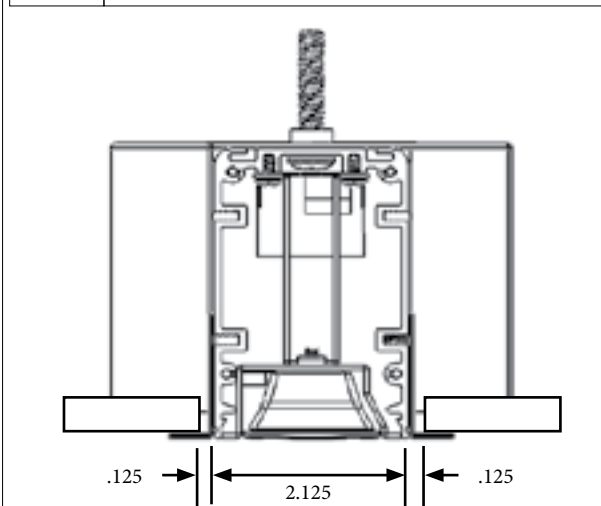
2 Prepare area where fixture is going to be installed. Finish edges of drywall.



3 Rough in dimension for cosmetic flange. $L+1/4"$ Where, L = length of the fixture (from endcap to endcap) $W+1/4"$ Where, W = width of the fixture



4 Prepare area where fixture is going to be installed. Finish edges of drywall.

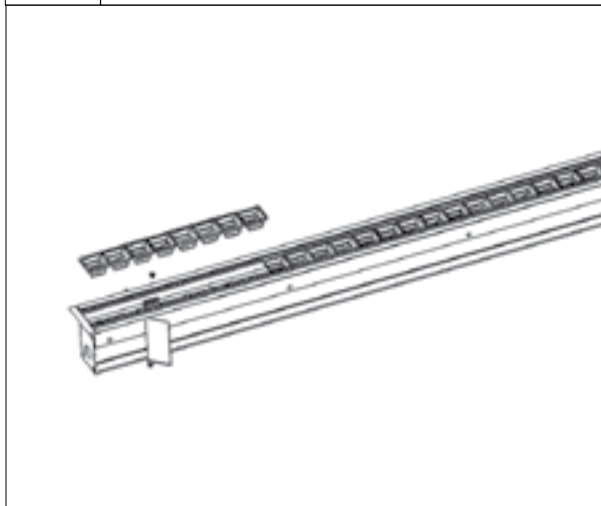


INSTALLATION INSTRUCTIONS

Individual Drywall w/Cosmetic Bezel (CBY/CB)

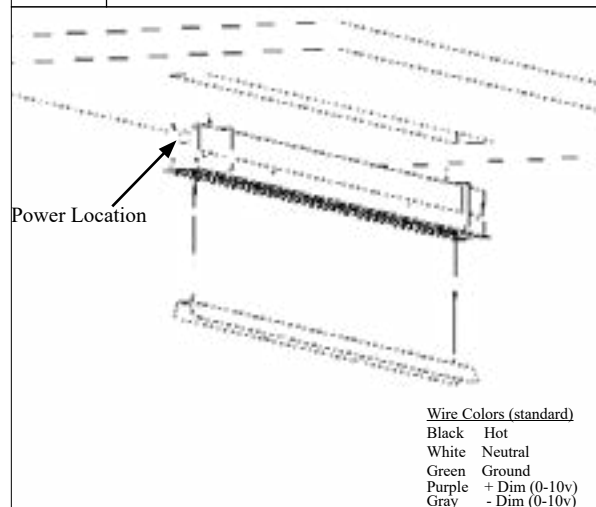
5

Snap out louvers at each end of the fixture and remove the screws at the brackets that hold the led board mount.



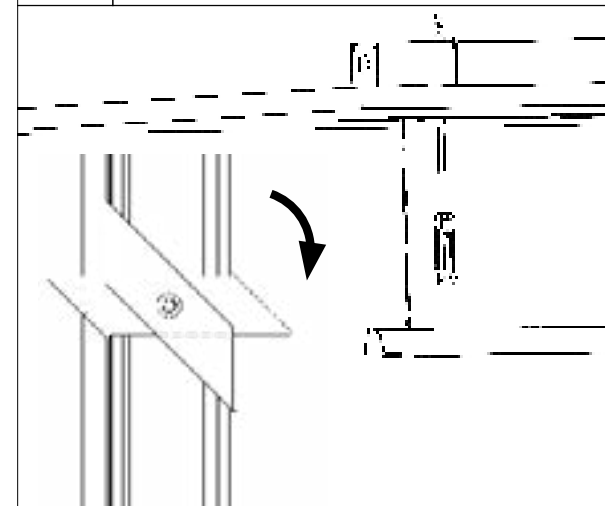
6

Connect to building mains. Led board mount will hang down from fixture with attached lanyard. Insert fixture into the drywall.



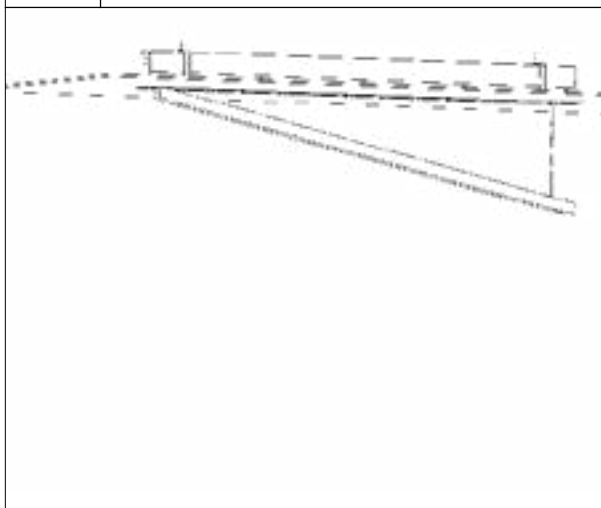
7

Tighten yolk bracket with screw driver to secure it to drywall. **Note:** To secure yolk bracket firmly, loosen screw, push up and tighten until completely secured to drywall.



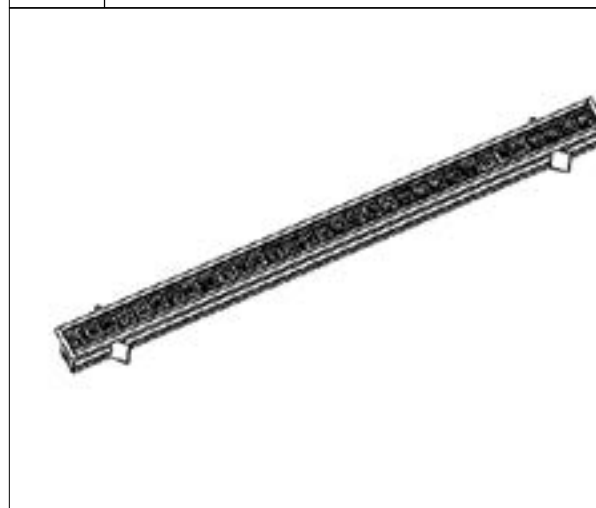
8

Re-install in the reverse order.



9

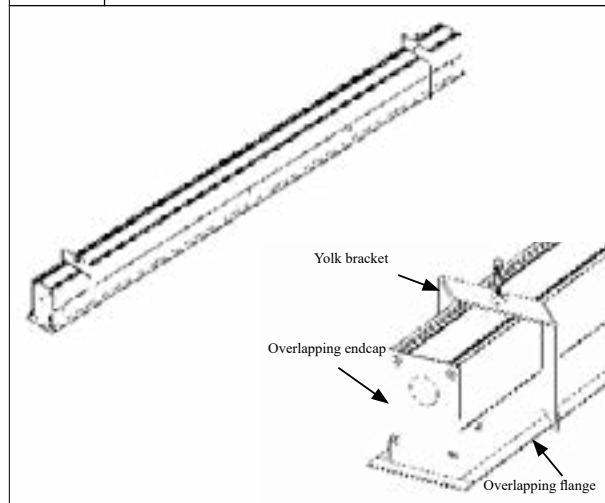
Snap in louver. Make sure it is properly seated in the fixture. Restore power.



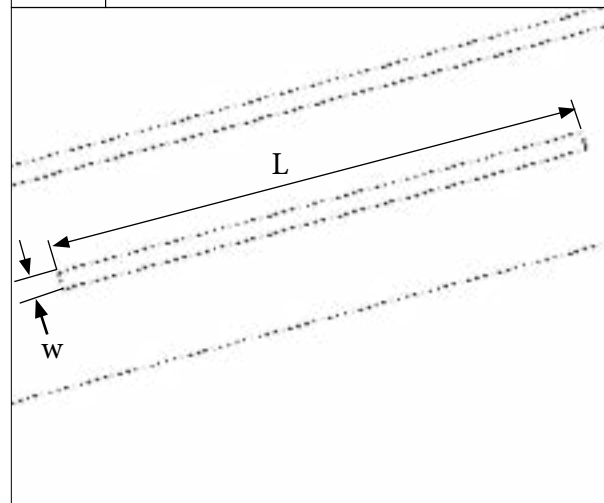
INSTALLATION INSTRUCTIONS

Continuous Drywall w/Cosmetic Bezel (CBY/CB)

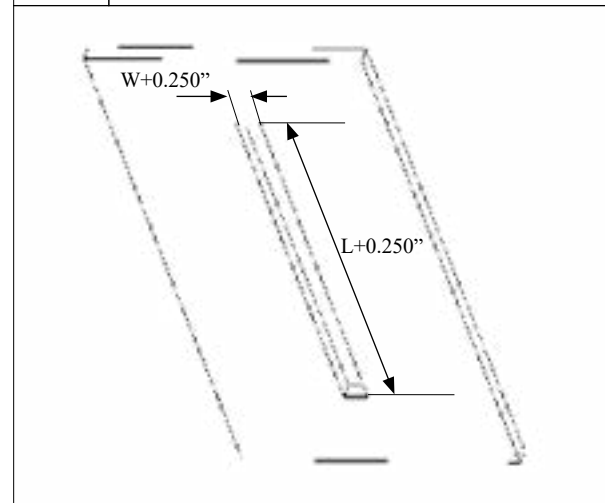
1 Power must be turned off prior to disconnecting or reconnecting fixture. **Note:** (lensing ships separate from fixtures for Continuous Row installations).



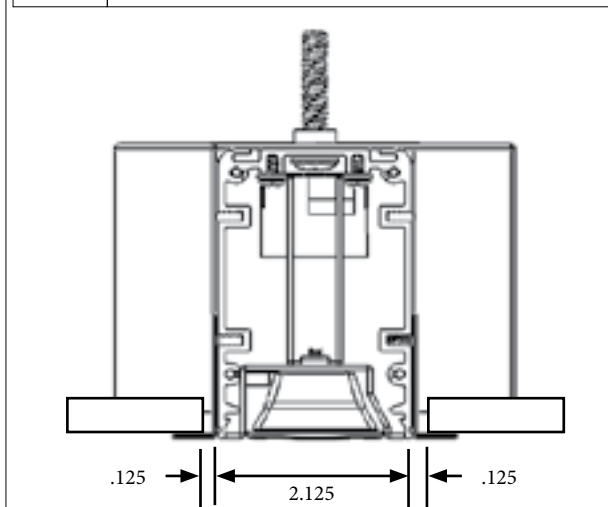
2 Prepare area where fixture is going to be installed. Finish edges of drywall.



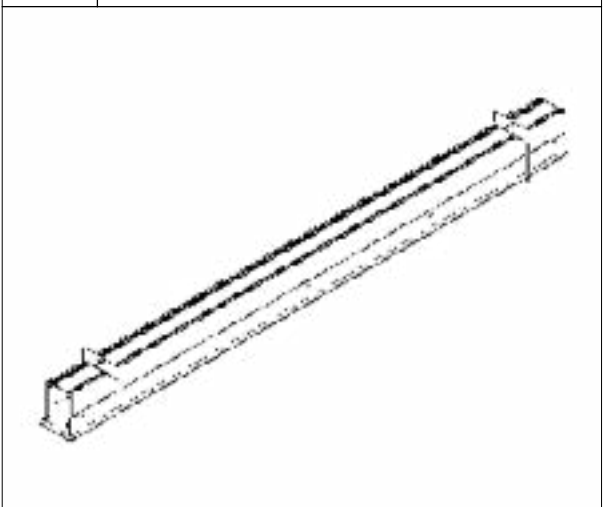
3 Rough in dimension for cosmetic flange. $L+1/4"$ Where, L = length of the fixture (from endcap to endcap) $W+1/4"$ Where, W = width of the fixture



4 Prepare area where fixture is going to be installed. Finish edges of drywall.



5 Hang starter fixture



INSTALLATION INSTRUCTIONS

Continuous Drywall w/Cosmetic Bezel (CBY/CB)

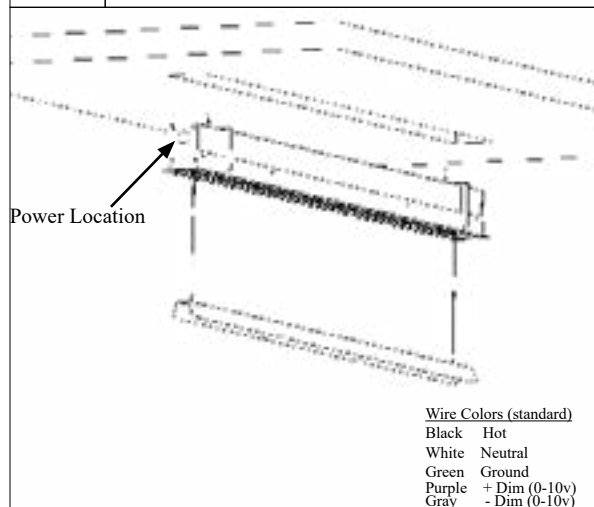
5

Snap out louvers at each end of the fixture and remove the screws at the brackets that hold the led board mount.



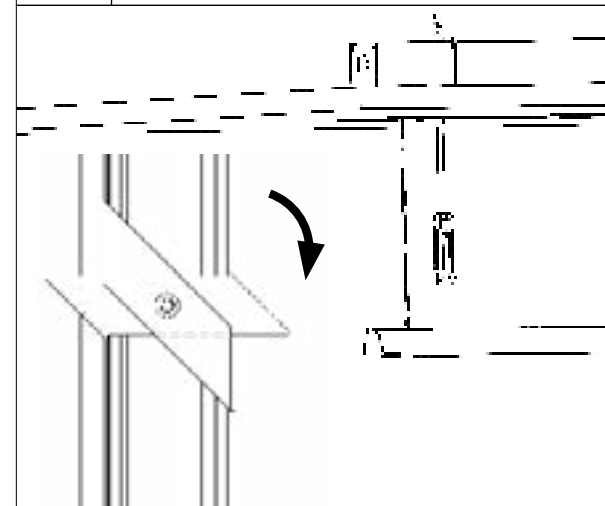
6

Connect to building mains. Reflector will hang down from fixture with attached lanyard. Insert fixture into the drywall.



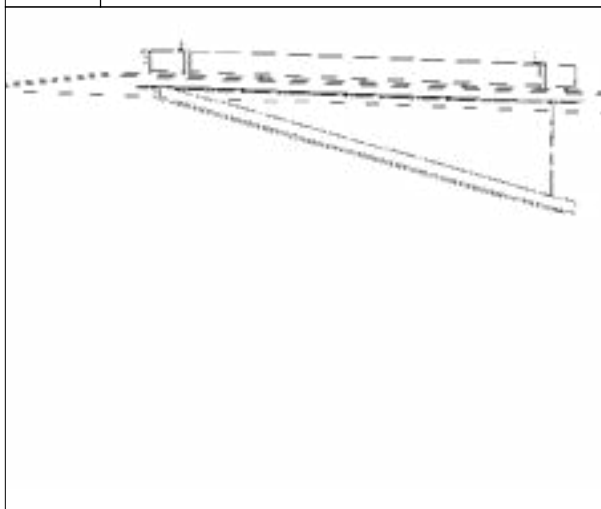
7

Tighten yolk bracket with screw driver to secure it to drywall. **Note:** To secure yolk bracket firmly, loosen screw, push up and tighten until completely secured to drywall.



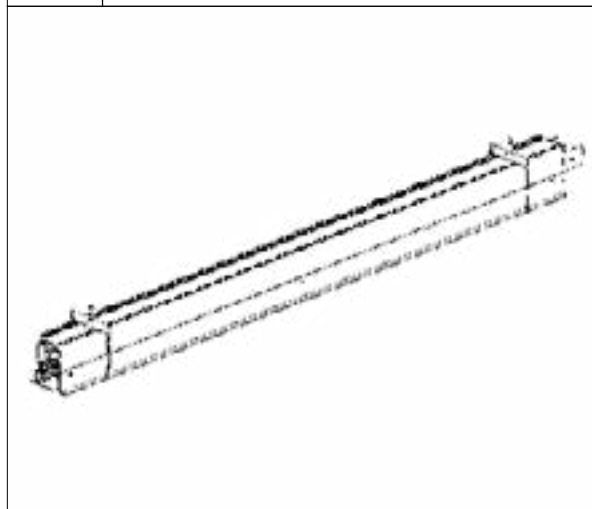
8

Re-install in the reverse order.



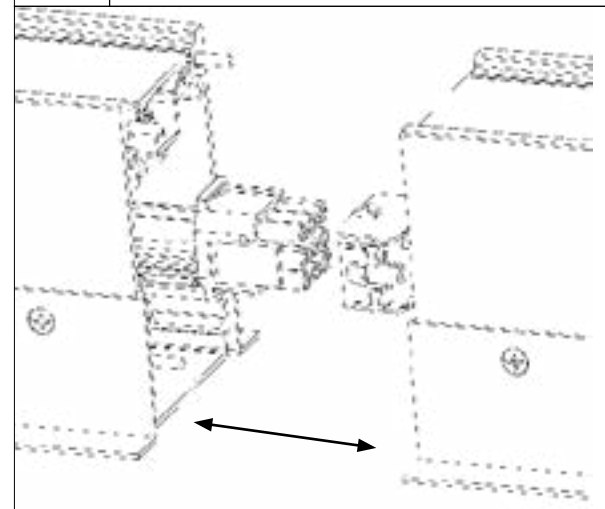
9

Hang middle fixture. Repeat steps 4, 5, 7, and 8



10

Align dowel pins of starter and middle fixture. Connect harness

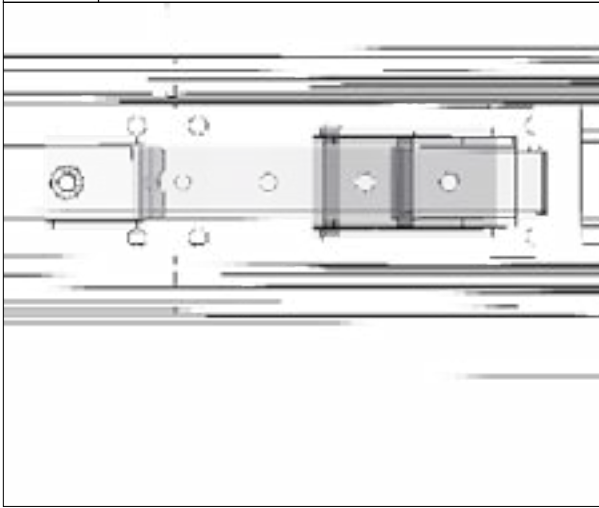


INSTALLATION INSTRUCTIONS

Continuous Drywall w/Cosmetic Bezel (CBY/CB)

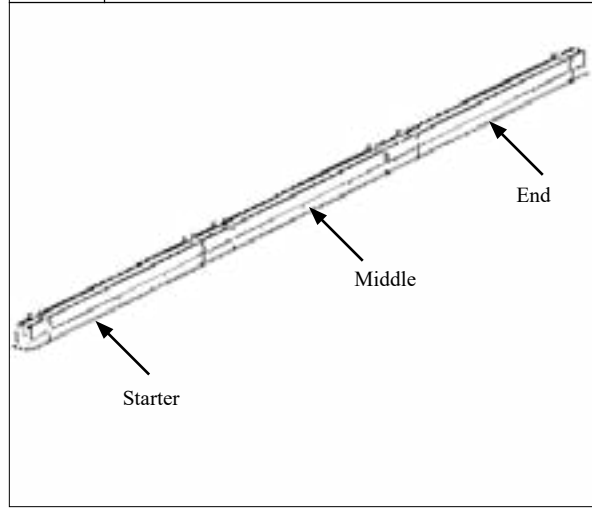
11

Link fixtures using latch and keeper. **Note:** if needed arises use a screw driver to release the latch. Hang end fixture. Repeat steps 4-5,7-11



16

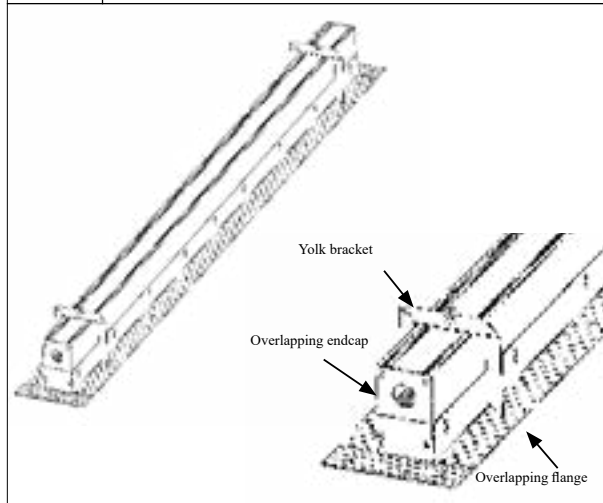
Restore power



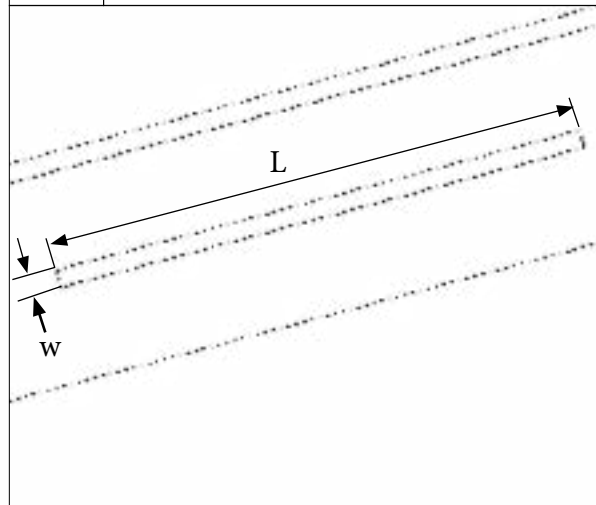
INSTALLATION INSTRUCTIONS

Individual Drywall w/Spackle Flange (SFY/SF)

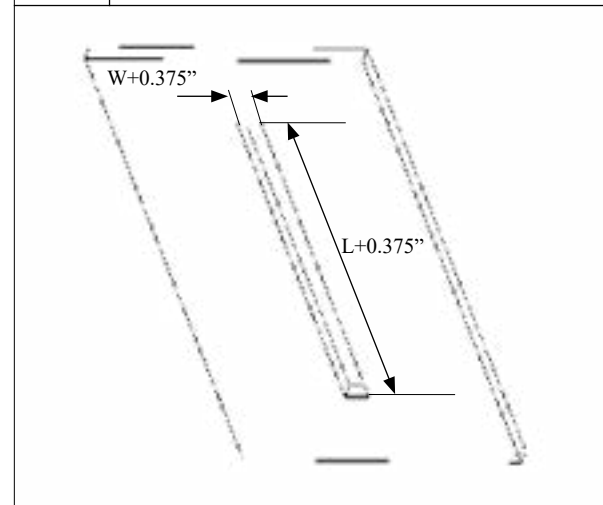
1 Power must be turned off prior to disconnecting or reconnecting fixture.



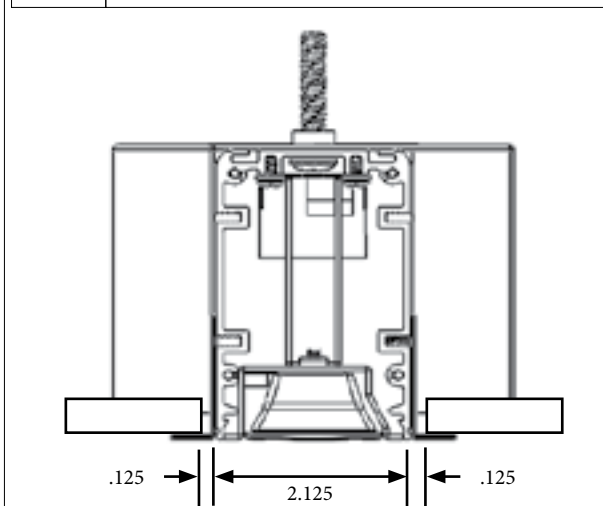
2 Prepare area where fixture is going to be installed. Finish edges of drywall.



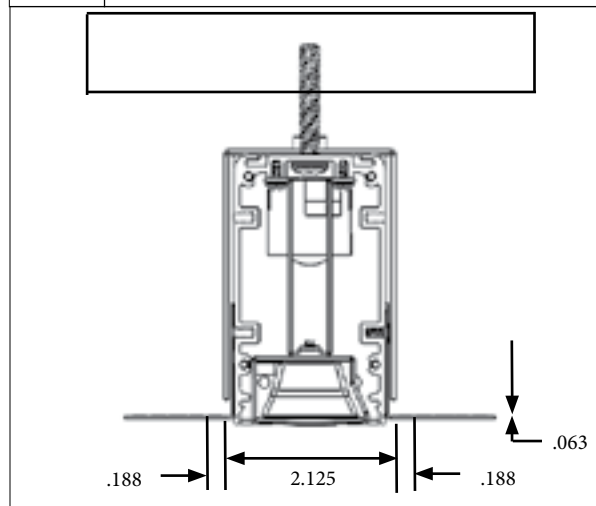
3 Rough in dimension for Spackle flange. $L+3/8''$ Where, L = length of the fixture (from endcap to endcap) $W+3/8''$ Where, W = width of the fixture



4 Prepare area where fixture is going to be installed. Finish edges of drywall.



5 Recessed Slimebeam screw mount

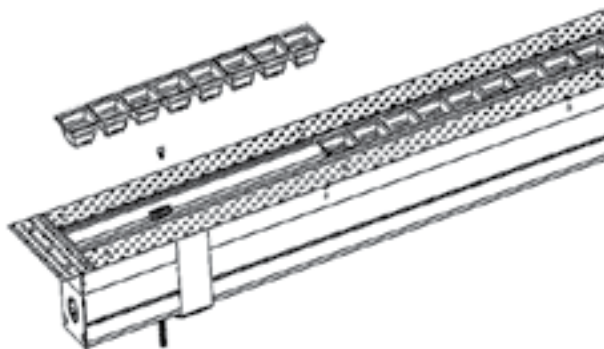


INSTALLATION INSTRUCTIONS

Individual Drywall w/SPACKLE FLANGE (SFY/SF)

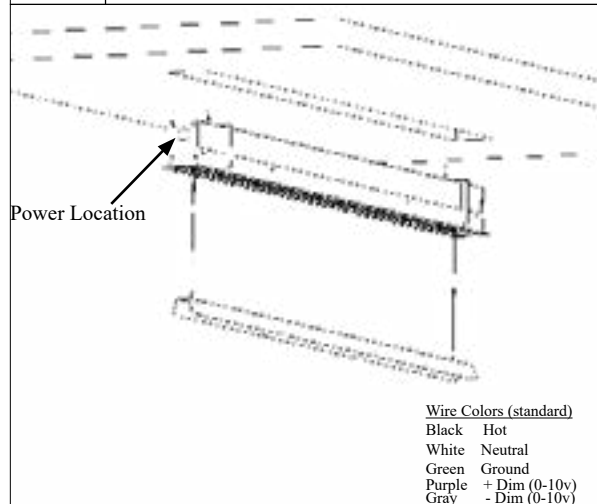
6

Snap out louvers at each end of the fixture and remove the screws at the brackets that hold the led board mount.



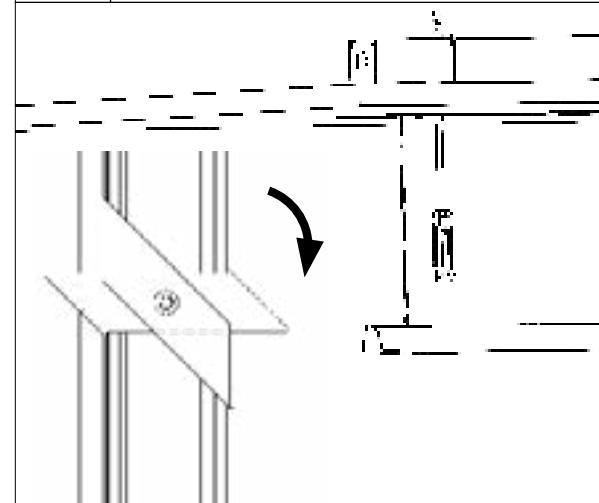
7

Connect to building mains. Reflector will hang down from fixture with attached lanyard. Insert fixture into the drywall.



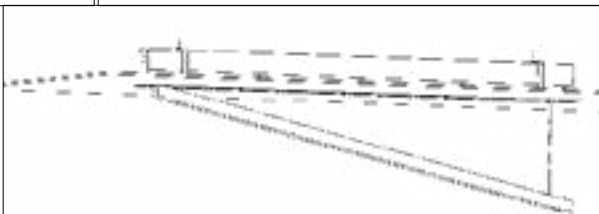
8

Tighten yolk bracket with screw driver to secure it to drywall. **Note:** To secure yolk bracket firmly, loosen screw, push up and tighten until completely secured to drywall.



9

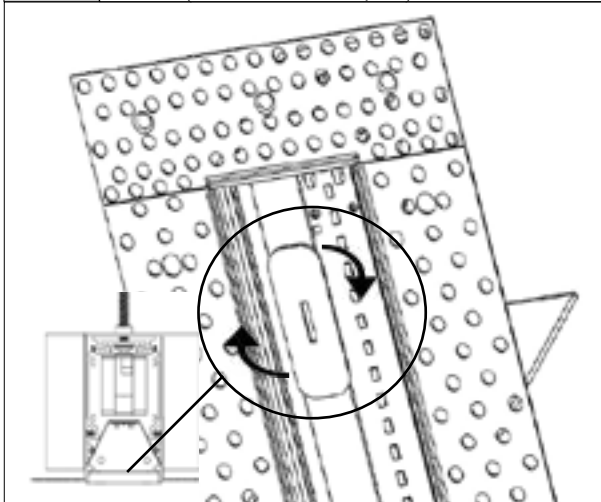
Re-install in the reverse order.



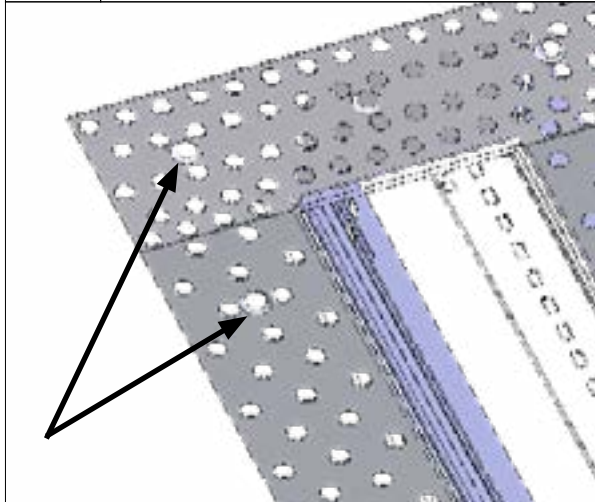
INSTALLATION INSTRUCTIONS

Individual Drywall w/SPACKLE FLANGE (SFY/SF)

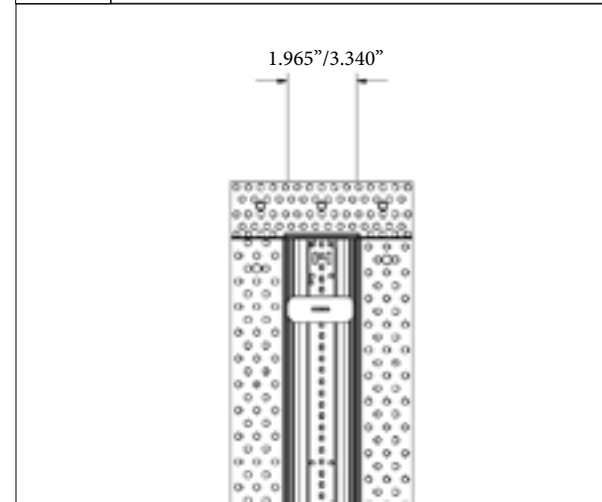
- 10** Twist installation spacer in between first ridge spacing to ensure sufficient space. Can be done by hand or with other hardware (flathead screwdriver, etc.)



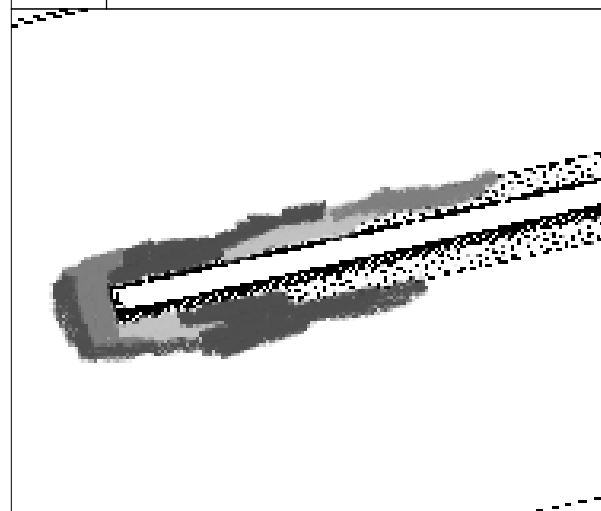
- 11** Use drywall screws and securely fasten fixture to structure.



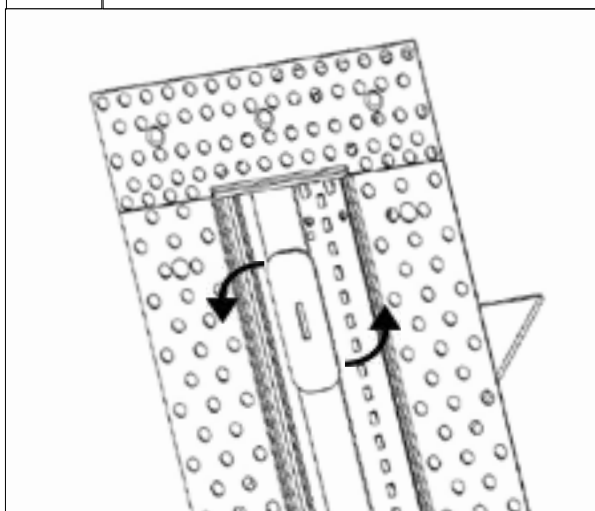
- 12** Opening for light housing should measure 1.965 inches for Recessed Slim Beam or 3.340 inches for Recessed Beam to ensure lens fits. Adjust drywall screws as needed.



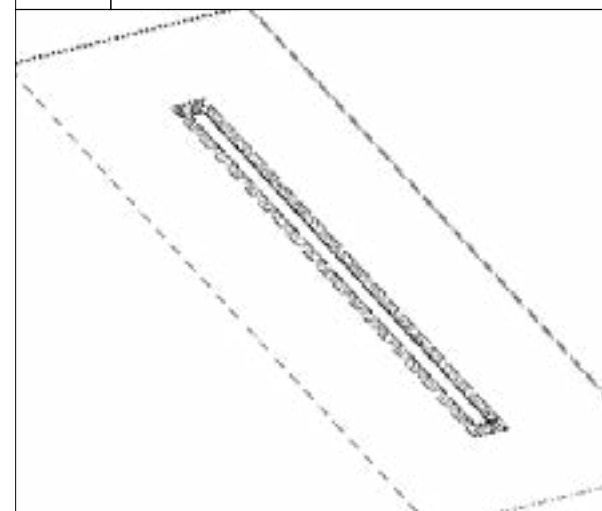
- 13** Place masking tape around inner edge of fixture housing to prevent debris from getting in. Plaster and sand over spackle flange to create a smooth finish.



- 14** Twist installation spacer out and remove.



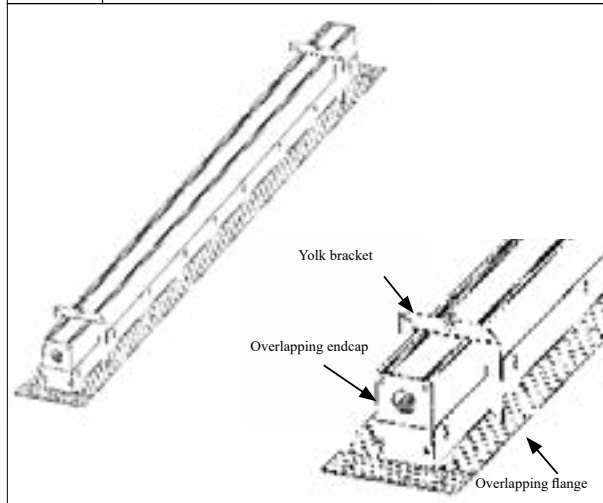
- 15** Once mud is totally dry, remove the masking tape. Reinstall lens. Restore power.



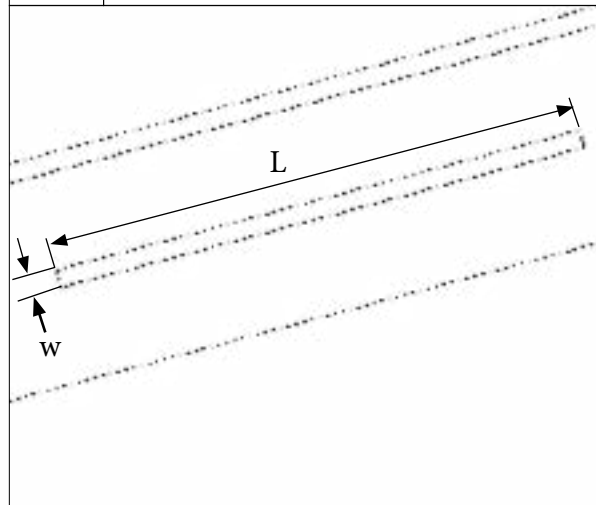
INSTALLATION INSTRUCTIONS

Continuous Drywall w/Spackle Flange (SFY/SF)

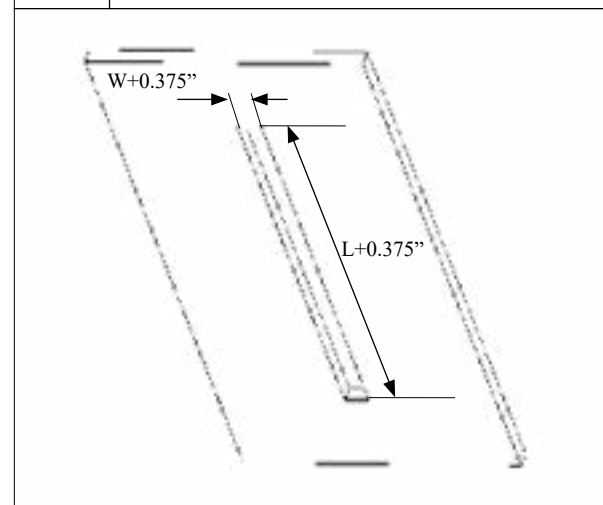
1 Power must be turned off prior to disconnecting or reconnecting fixture.



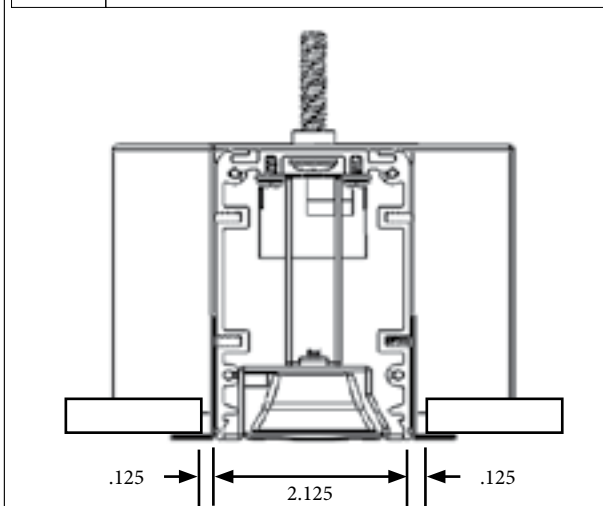
2 Prepare area where fixture is going to be installed. Finish edges of drywall.



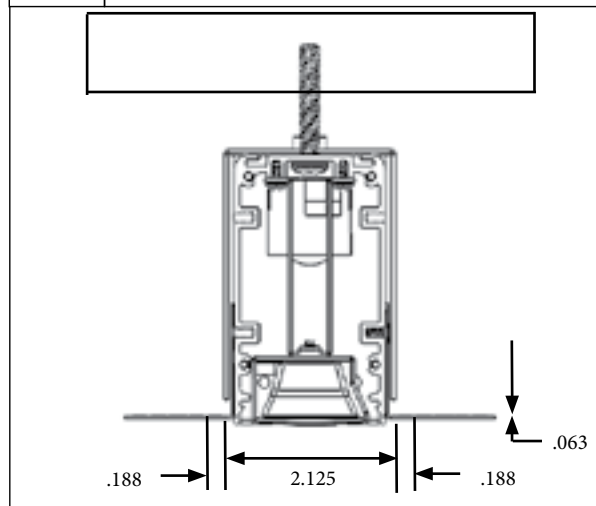
3 Rough in dimension for Spackle flange. $L + 3/8"$ Where, L = length of the fixture (from endcap to endcap) $W + 3/8"$ Where, W = width of the fixture



4 Prepare area where fixture is going to be installed. Finish edges of drywall.



5 Recessed Slimebeam screw mount

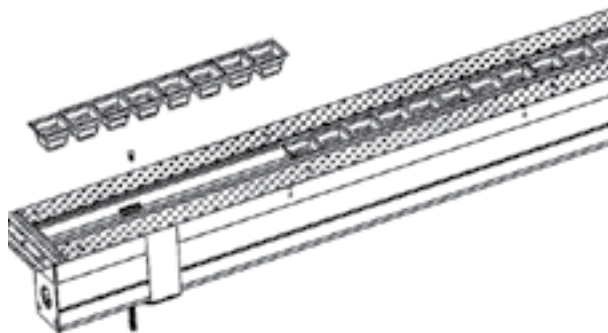


INSTALLATION INSTRUCTIONS

Continuous Drywall w/SPACKLE FLANGE (SFY/SF)

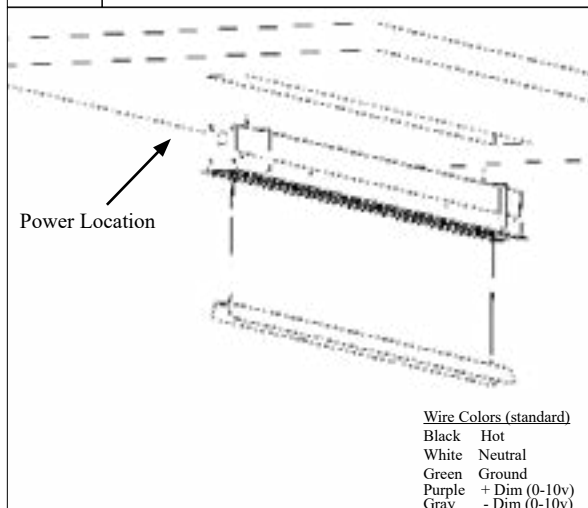
6

Snap out louvers at each end of the fixture and remove the screws at the brackets that hold the led board mount.



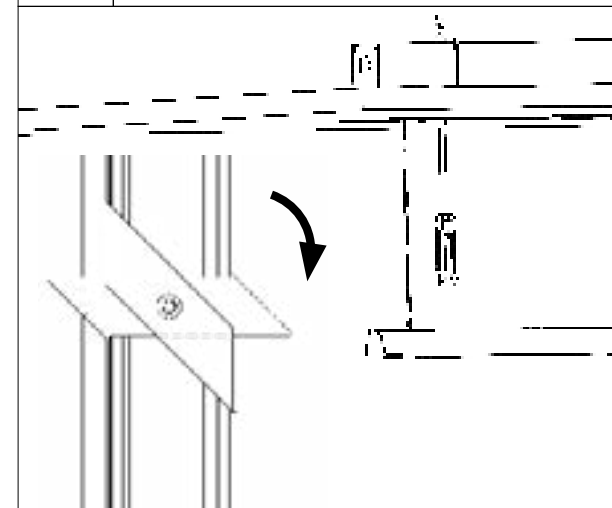
7

Connect to building mains. Reflector will hang down from fixture with attached lanyard. Insert fixture into the drywall.



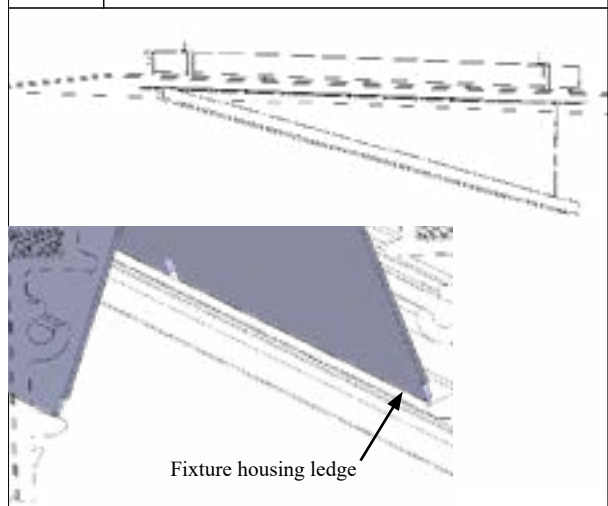
8

Tighten yolk bracket with screw driver to secure it to drywall. **Note:** To secure yolk bracket firmly, loosen screw, push up and tighten until completely secured to drywall.



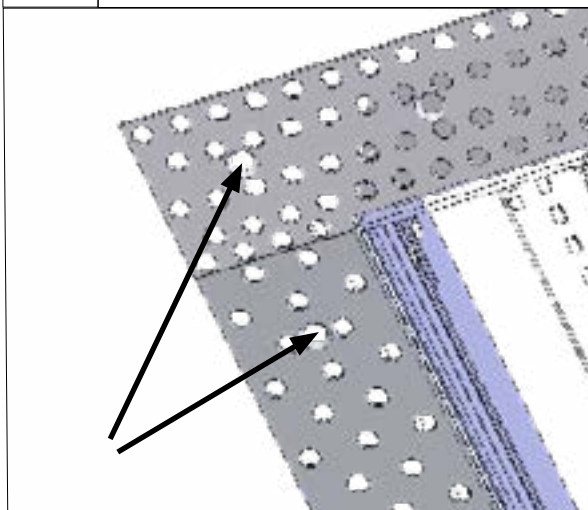
9

Re-install reflector. Make sure the edge of the reflector is properly seated in fixture housing.



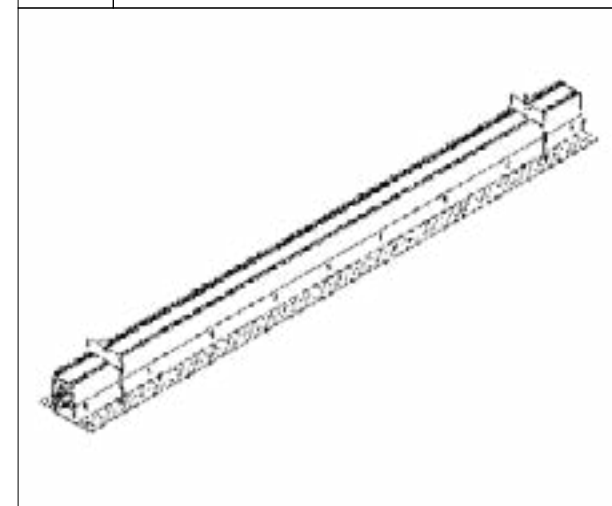
10

Use drywall screws and securely fasten fixture to structure.



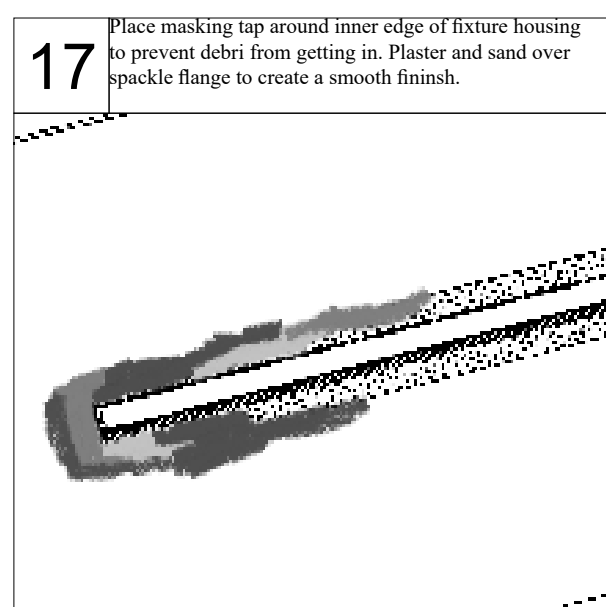
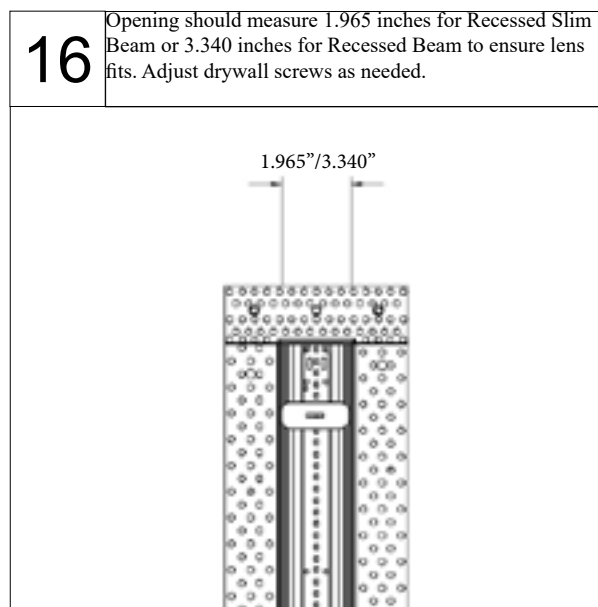
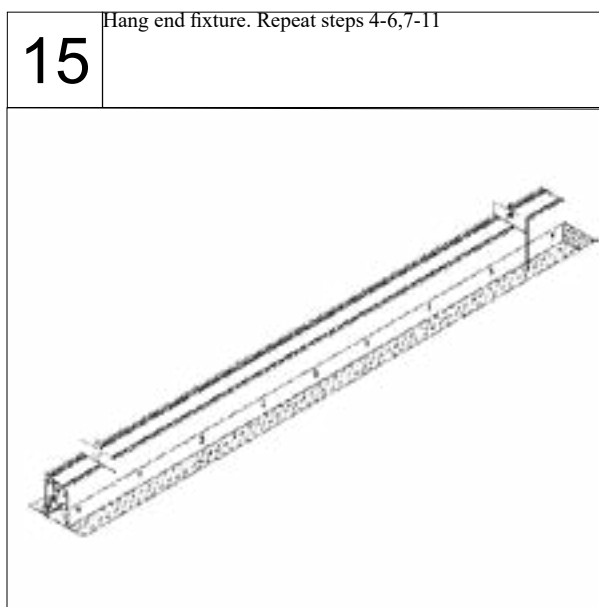
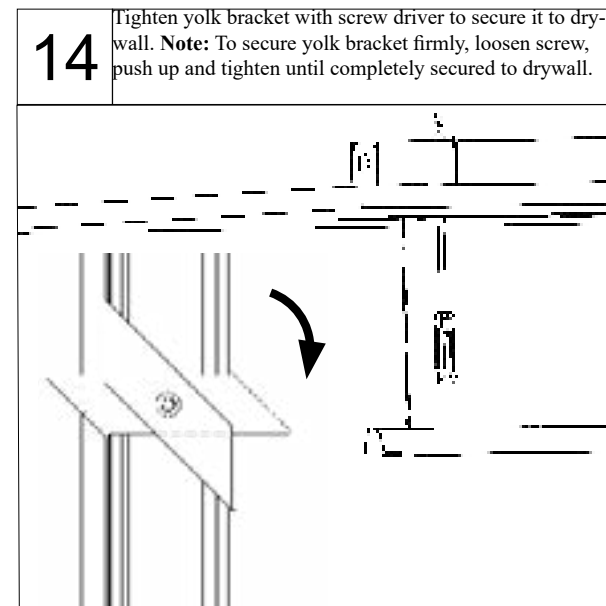
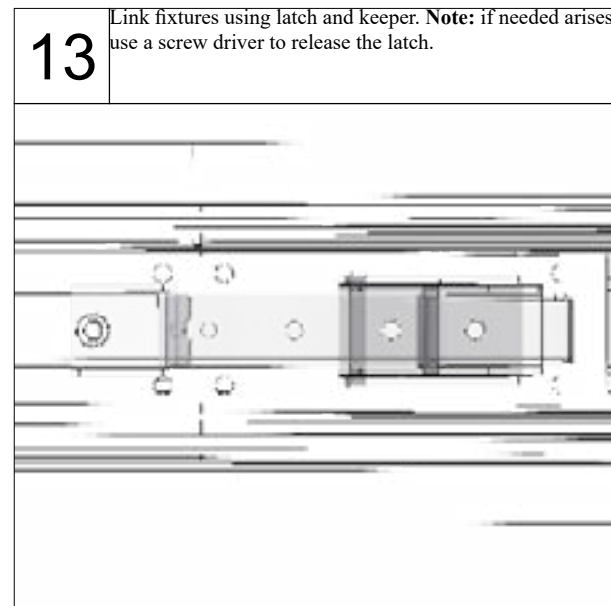
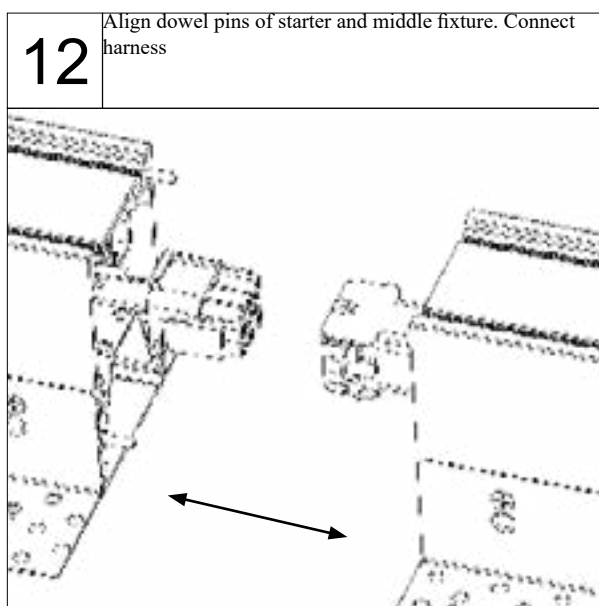
11

Hang middle fixture. Repeat steps 4-5,7



INSTALLATION INSTRUCTIONS

Continuous Drywall w/SPACKLE FLANGE (SFY/SF)



INSTALLATION INSTRUCTIONS

Continuous Drywall w/SPACKLE FLANGE (SFY/SF)

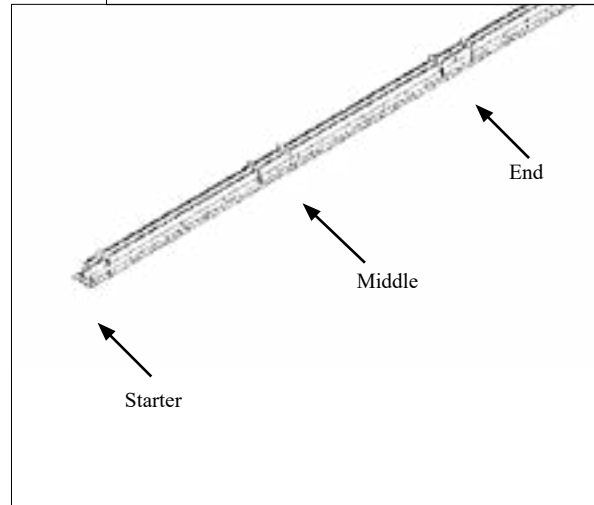
18

Once mud is totally dry, remove the masking tape. Install lens. Restore power.



19

Restore power

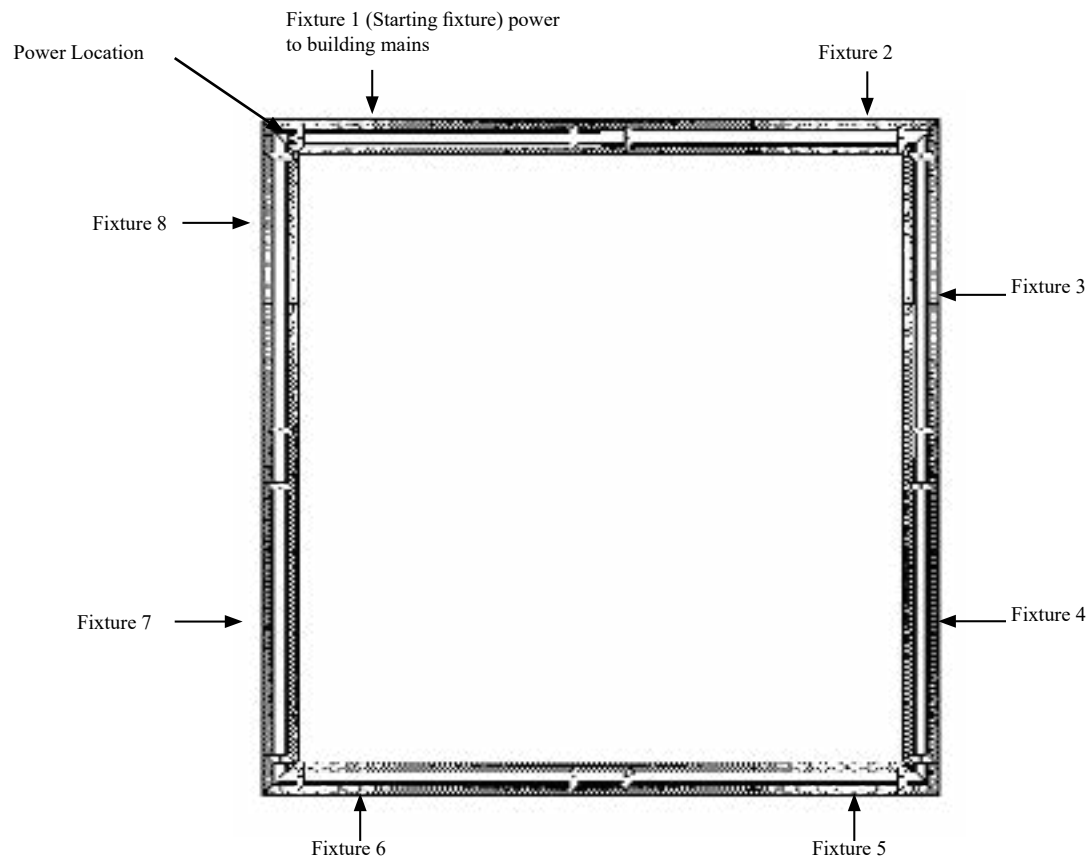


INSTALLATION INSTRUCTIONS

Shape Configuration Spackle Flange Rectangle (SFY/SF) Sq or Rect

Wire Colors (standard)

Black	Hot
White	Neutral
Green	Ground
Purple	+ Dim (0-10v)
Gray	- Dim (0-10v)



Step 1. Hang fixture 1

Step 2. Hang fixture 2. Connect fixtures 1&2.

Step 3. Hang fixture 3. Connect fixtures 3&2.

Step 4. Hang fixture 4. Connect fixtures 4&3.

Step 5. Hang fixture 5. Connect fixtures 5&4.

Step 6. Hang fixture 6. Connect fixtures 6&5.

Step 7. Hang fixture 7. Connect fixtures 7&6.

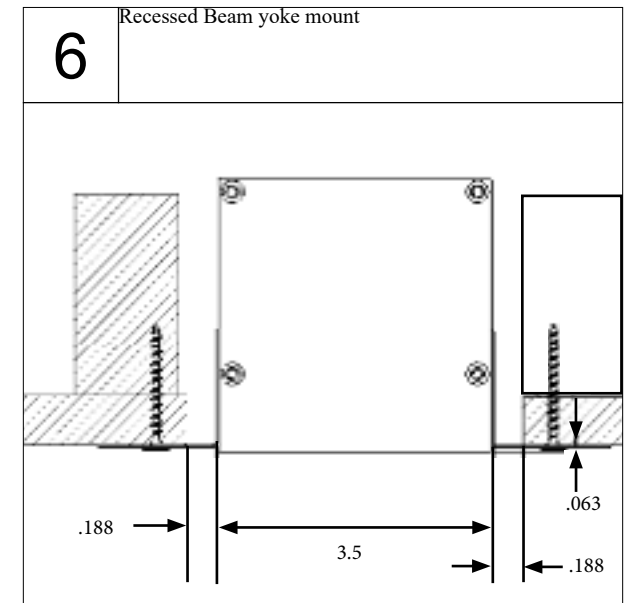
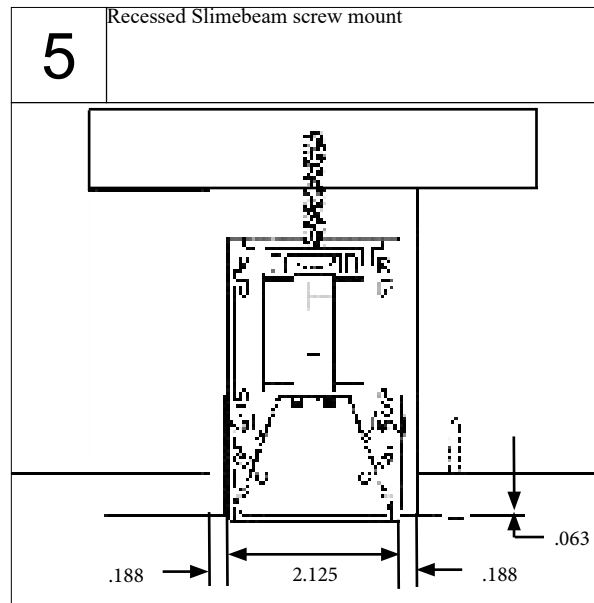
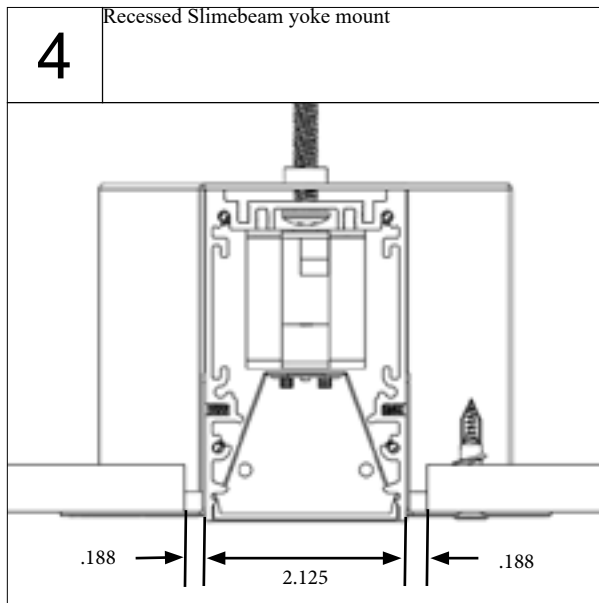
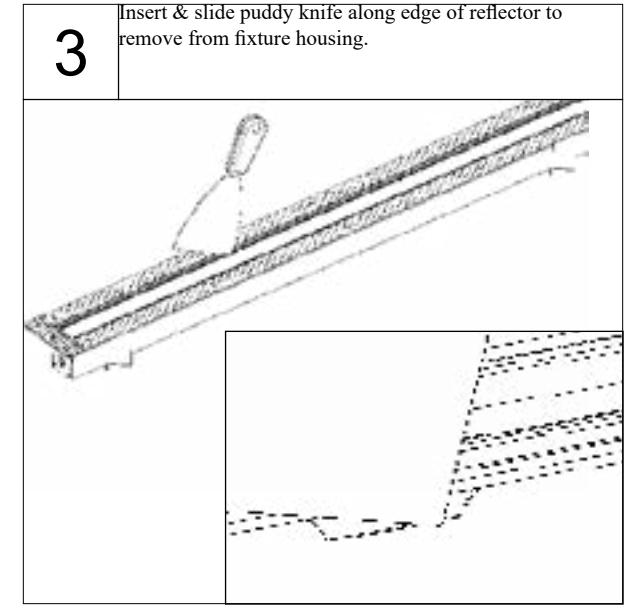
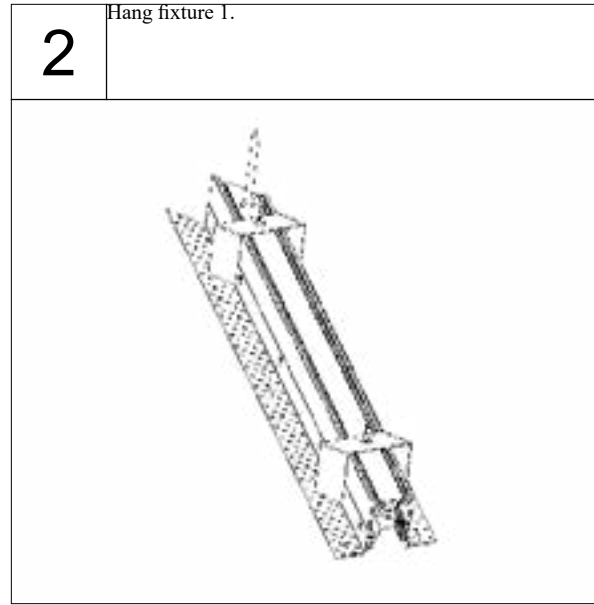
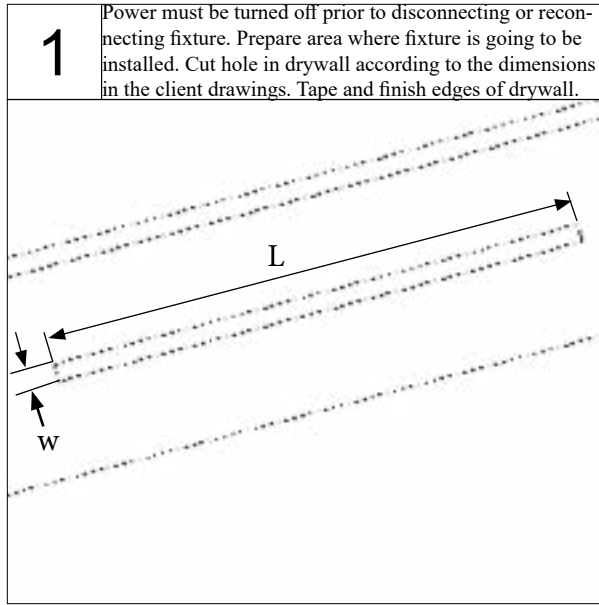
Step 8. Hang fixture 8. Connect fixtures 8,7&1.

Step 13. Snap in continuous lens.

Note: Latch and kepper are only on liner portion of shapes.

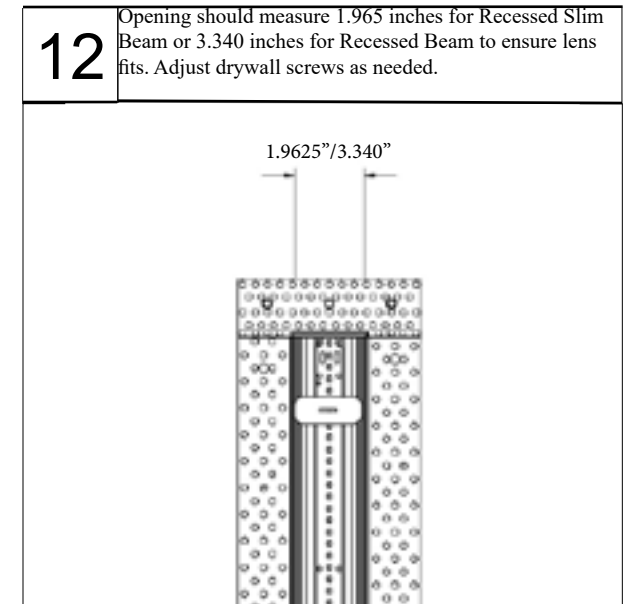
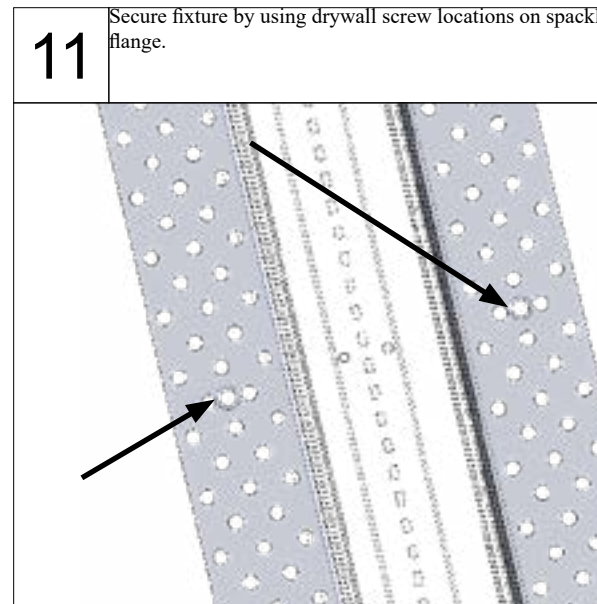
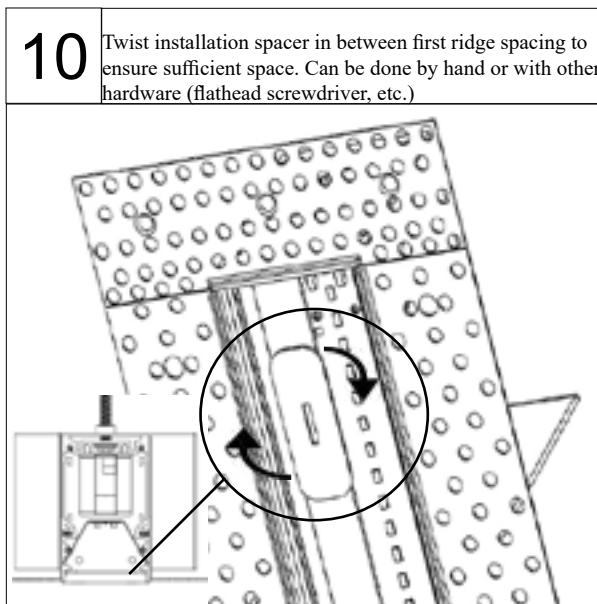
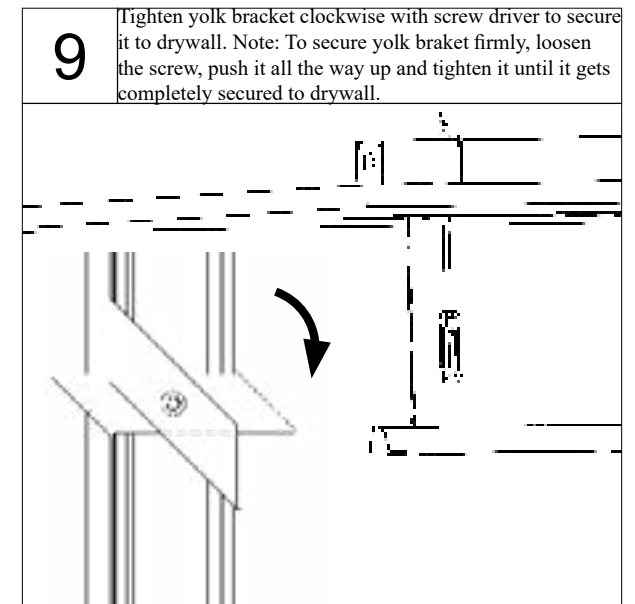
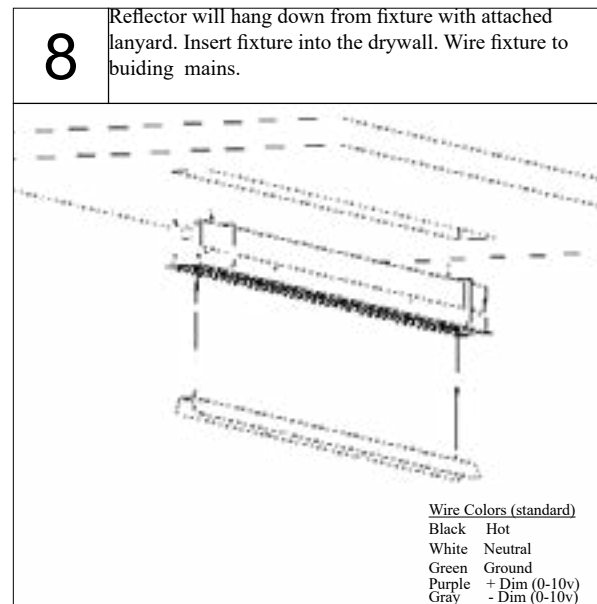
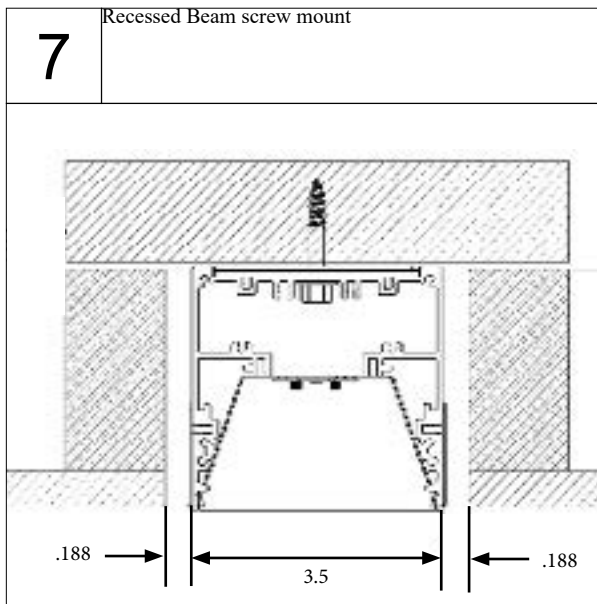
INSTALLATION INSTRUCTIONS

Shape Configuration Spackle Flange (SFY/SF) Sq or Rect



INSTALLATION INSTRUCTIONS

Shape Configuration Spackle Flange (SFY/SF) Sq or Rect



INSTALLATION INSTRUCTIONS

Shape Configuration Spackle Flange (SFY/SF) Sq or Rect

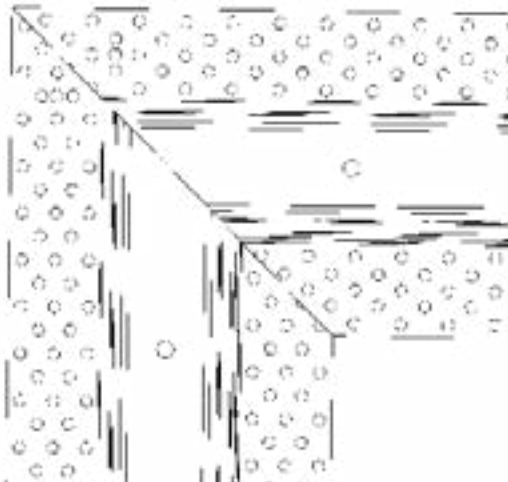
13

Hang fixture 2.



14

Connect harness. Align edge of miter cuts together as tightly as you can. follow steps 3-6



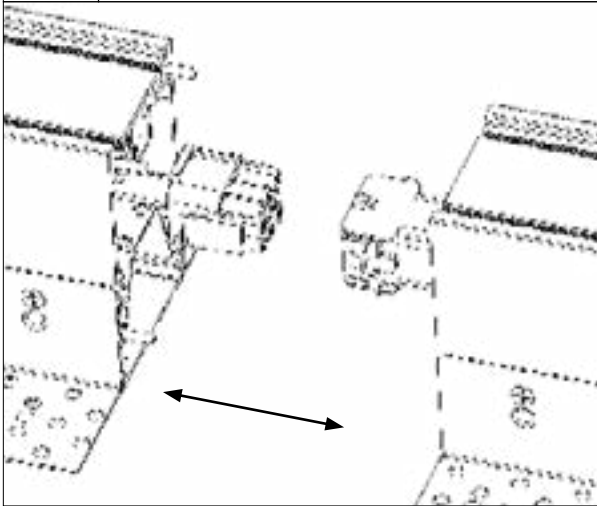
15

Hang fixture 3. Repeat steps 3-6. **Note:** Latch and keeper is only on linersection of shapes.



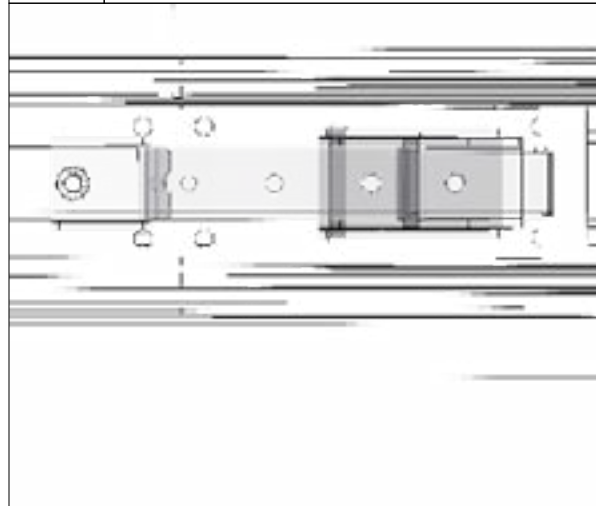
16

Align dowel pins and connect harness.



17

Link fixtures using latch and keeper. **Note:** if needed arises use a screw driver to release the latch.



18

Hang fixture 4. Repeat steps until shap is closed looped.

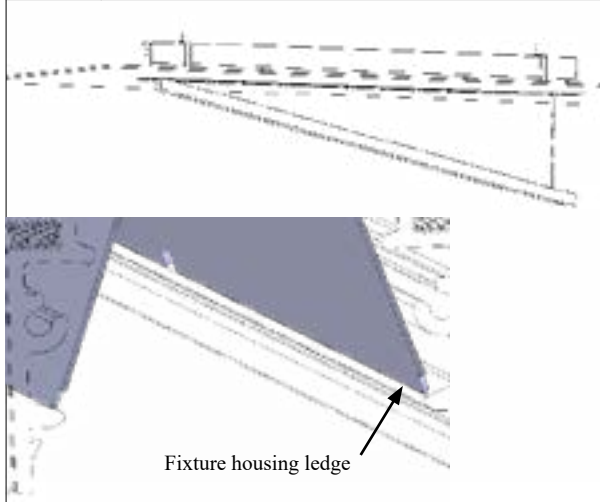


INSTALLATION INSTRUCTIONS

Shape Configuration Spackle Flange SFY/SF) Sq or Rect

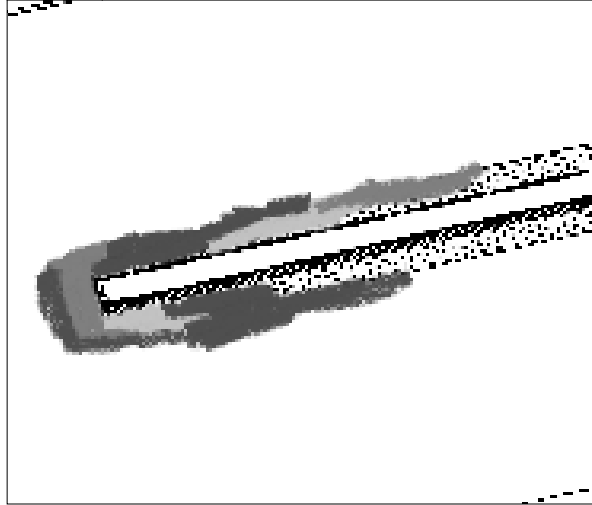
19

Reinstall reflector. Make sure the edge of the reflector is sitting on the feature of the extrusion.



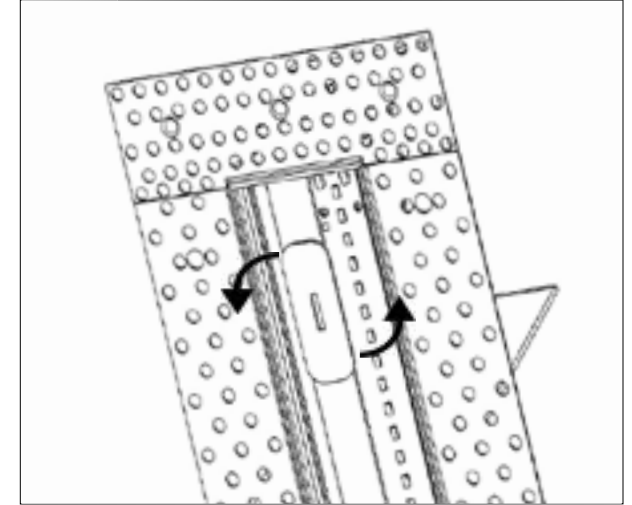
20

Place masking tap around inner edge of fixture housing to prevent debris from getting in. Plaster and sand over spackle flange to create a smooth finish.



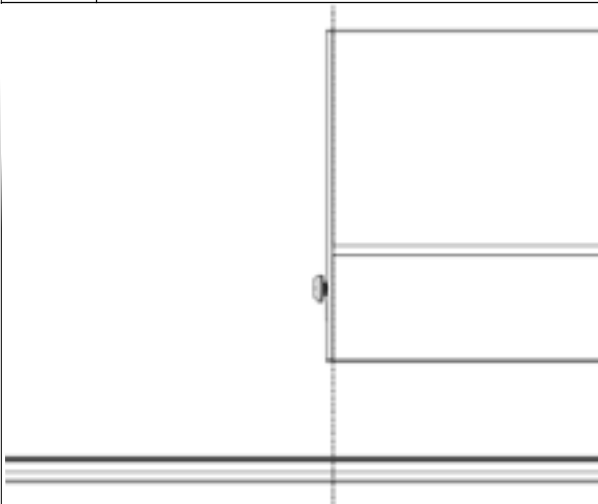
21

Twist installation spacer out and remove.



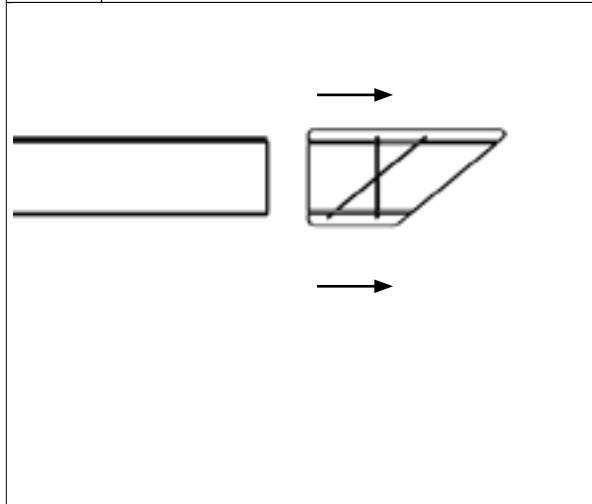
22

Lenses ship with longer lengths than fixtures. Measure and mark the length of the lens needed.



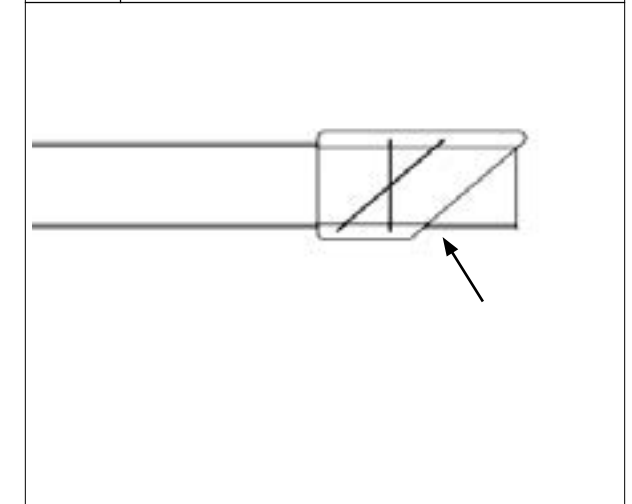
23

Insert one end of the lens into lens cutter as shown. Be sure that there is material visible through the 45-degree slot. Holding lens and cutter securely, scribe the lens with a knife a minimum of 10 times.



24

Push lens farther through the cutting jig until the score line matches the edge of the part. Carefully snap lens at the score line. If the lens does not snap relatively easy, continue to score until it does.



INSTALLATION INSTRUCTIONS

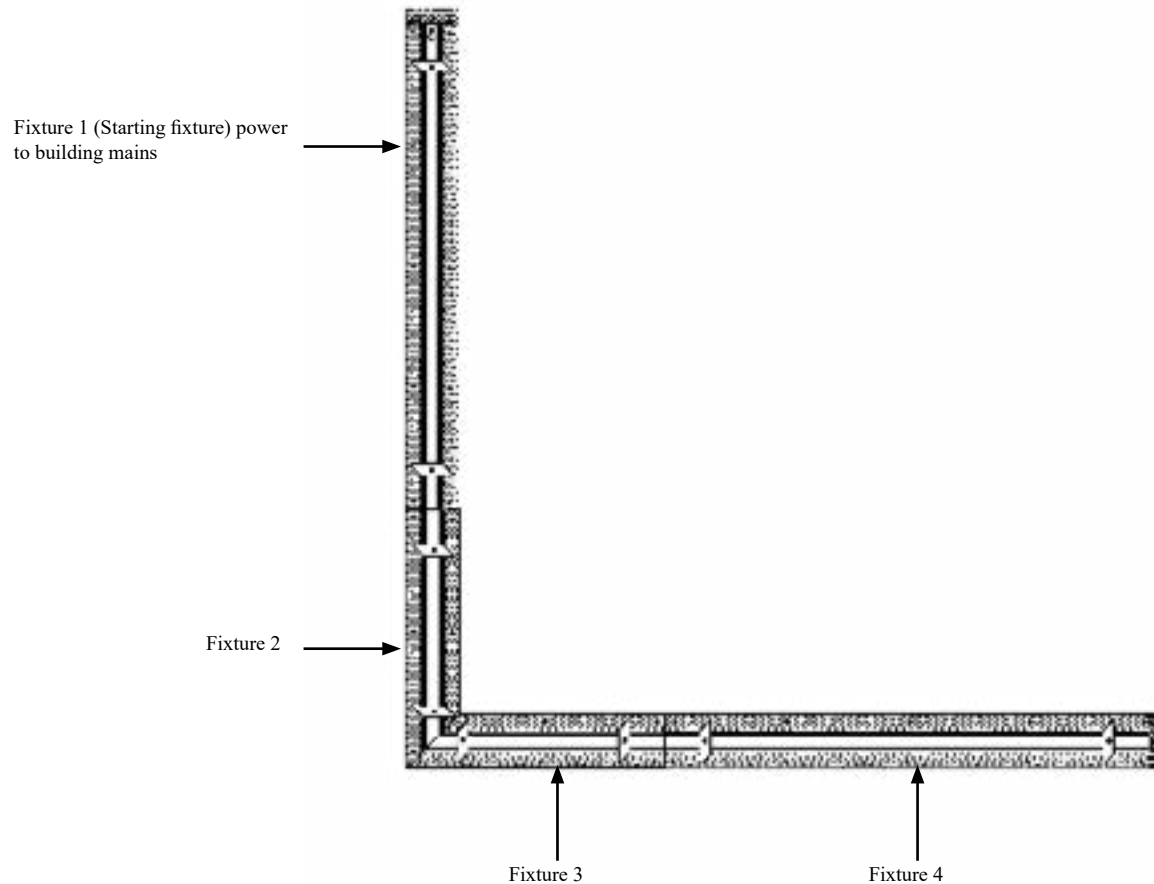
25

Measure out the lengths needed for the lens to span the run lengths as shown.



INSTALLATION INSTRUCTIONS

Shape Configuration L Drywall Spackle Flange (SFY/SF)

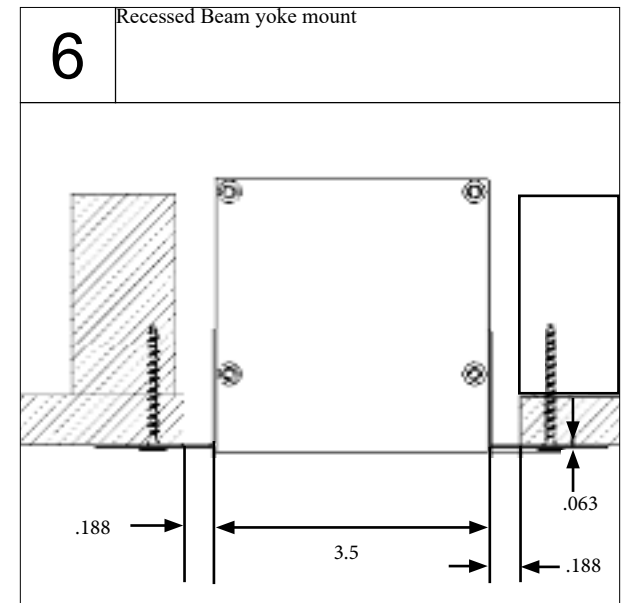
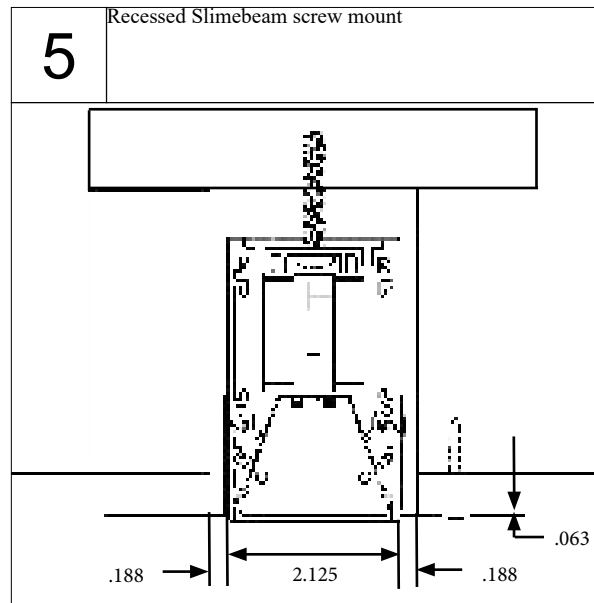
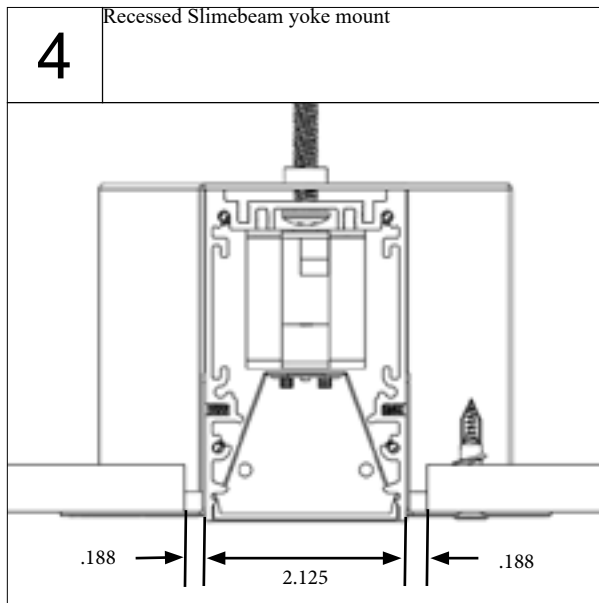
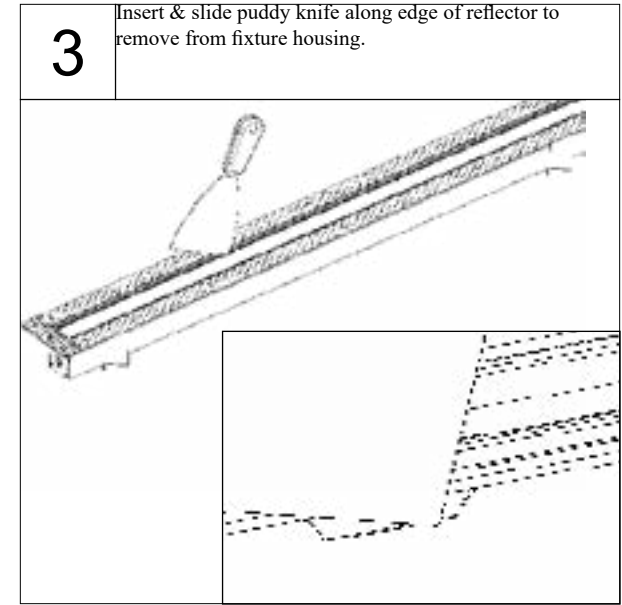
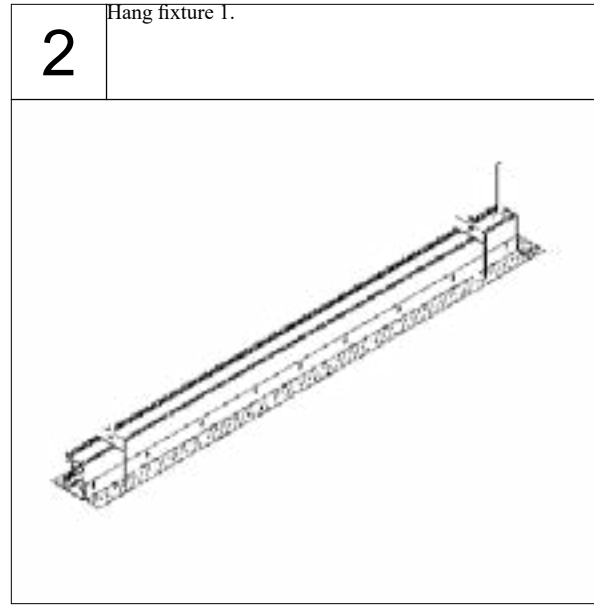
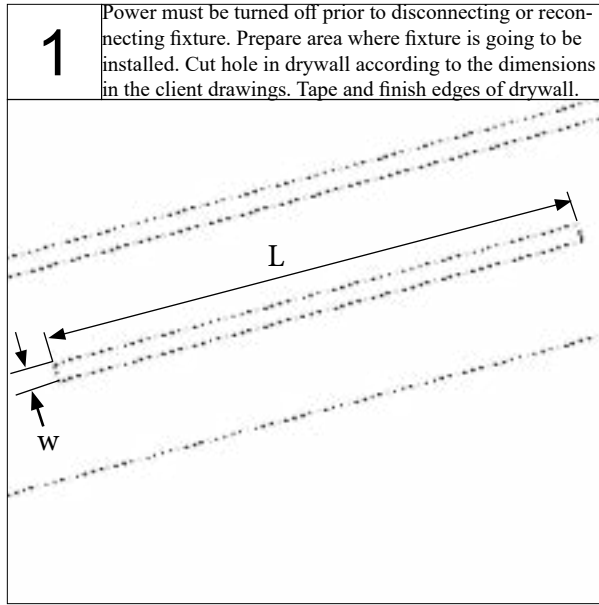


- Step 1. Hang fixture 1
- Step 2. Hang fixture 2. Connect fixtures 1&2.
- Step 3. Hang fixture 3. Connect fixtures 3&2
- Step 4. Hang fixture 4. Connect fixtures 4&3.
- Step 5. Snap in continuous lens.

Note: Latch and kepper are only on liner portion of shapes.

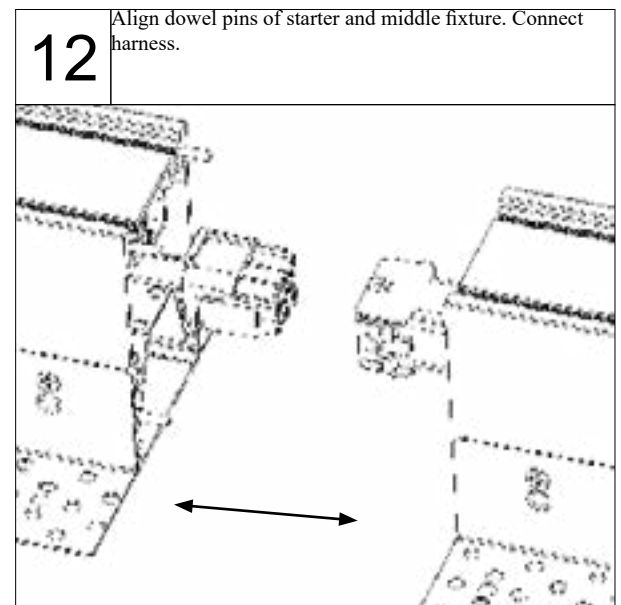
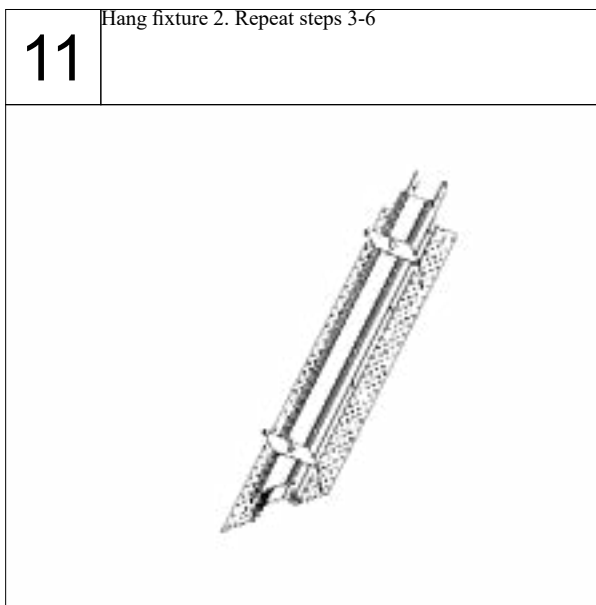
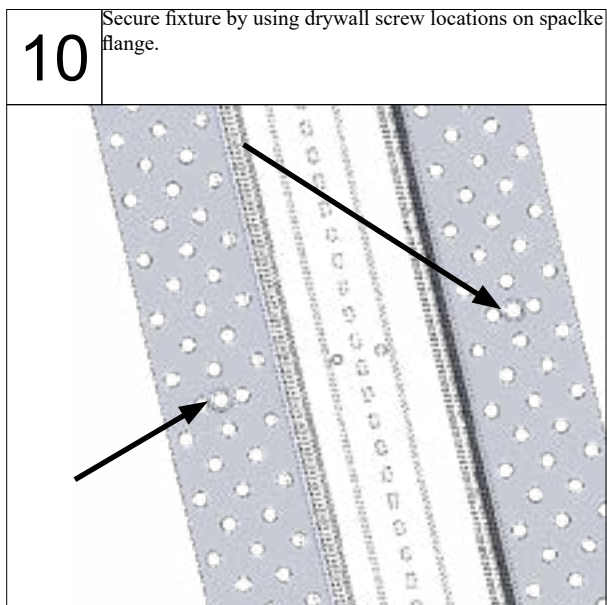
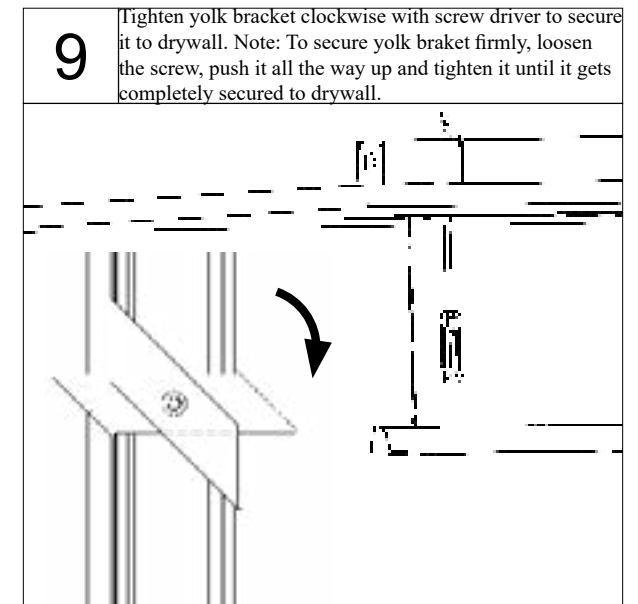
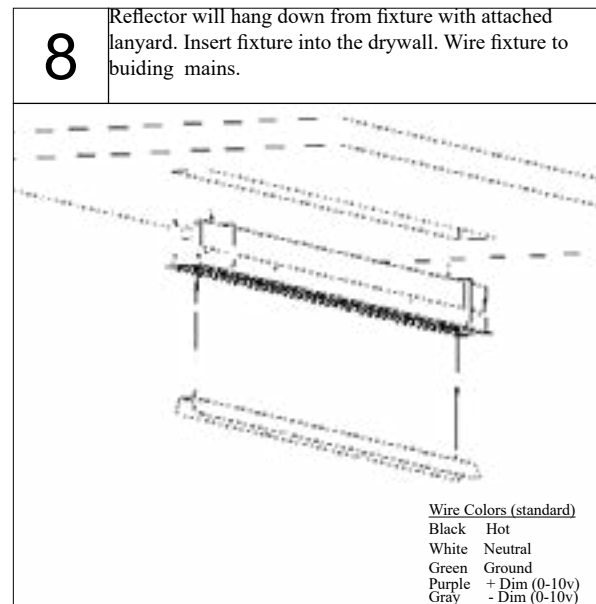
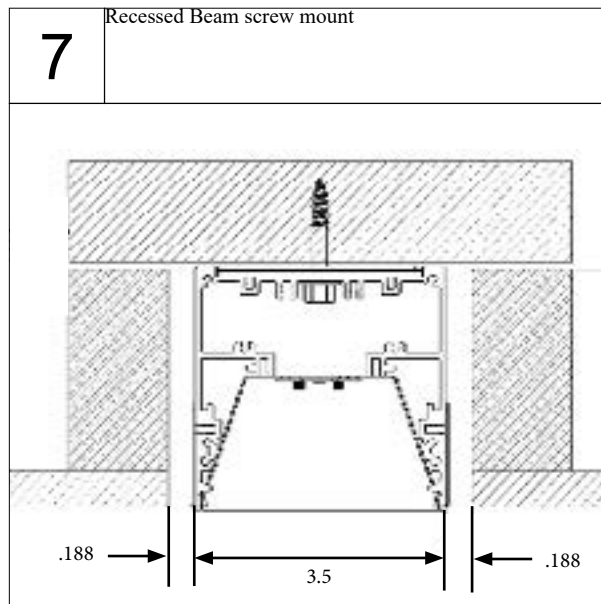
INSTALLATION INSTRUCTIONS

Shape Configuration L Drywall Spackle Flange (SFY/SF)



INSTALLATION INSTRUCTIONS

Shape Configuration L Drywall Spackle Flange (SFY/SF)

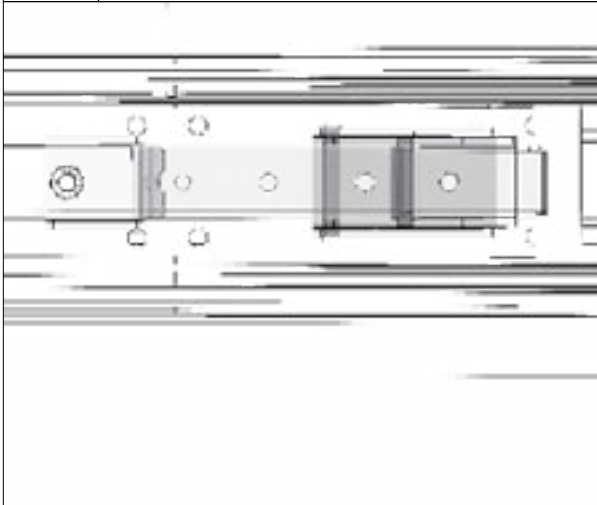


INSTALLATION INSTRUCTIONS

Shape Configuration L Drywall Spackle Flange (SFY/SF)

13

Link fixtures using latch and keeper. **Note:** if needed arises use a screw driver to release the latch.



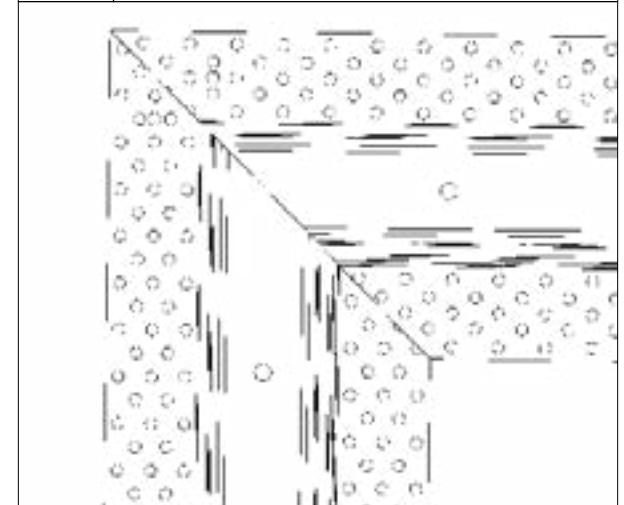
14

Hang fixture 3. Repeat steps 3-6



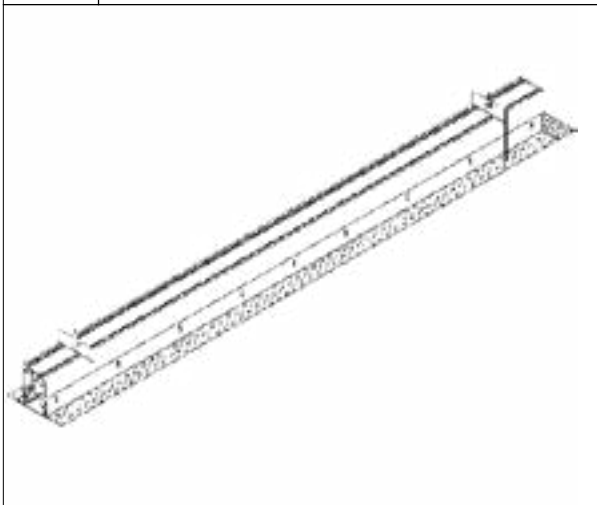
15

Connect harness. Align edge of miter cuts together as tightly as you can. follow steps 3-6



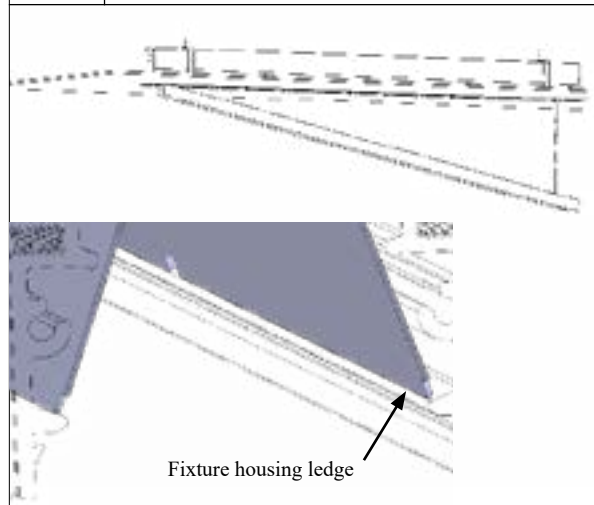
16

Hang fixture 4. Repeat steps 3-6 & 8-9. **Note:** Latch and keeper are only on liner portion of shapes.



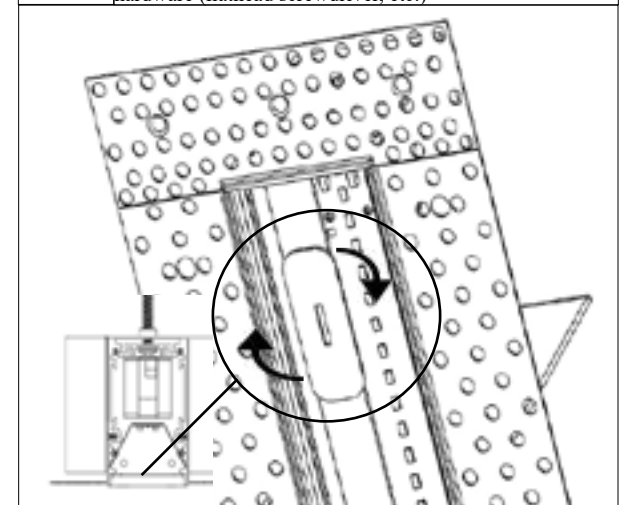
17

Reinstall reflector. Make sure the edge of the reflector is sitting on the feature of the extrusion.



18

Twist installation spacer in between first ridge spacing to ensure sufficient space. Can be done by hand or with other hardware (flathead screwdriver, etc.)



INSTALLATION INSTRUCTIONS

Shape Configuration L Drywall Spackle Flange (SFY/SF)

19	Opening should measure 1.965 inches for Recessed Slim Beam or 3.340 inches for Recessed Beam to ensure lens fits. Adjust drywall screws as needed.	20	Plaster and sand over spackle flange to create a smooth finish. Once mud is totally dry, remove the masking tape.	21	Twist installation spacer out and remove.
22	Lenses ship with longer lengths than fixtures. Mark both run length edges of the lens to the edge length of the fixture.	23	Scribe the lens multiple times min of (10X). While holding the fixture secure, apply pressure in an upward direction to detach extra lens material.	24	Install continuous lens.

INSTALLATION INSTRUCTIONS

25

Restore power.

