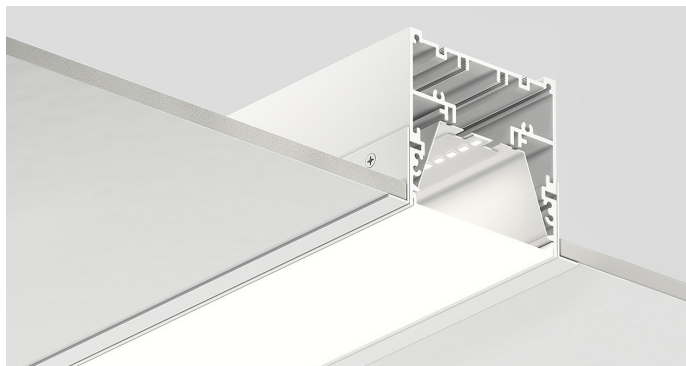
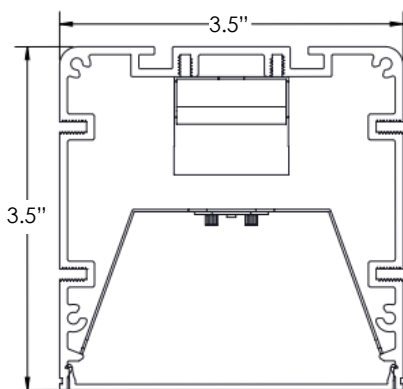


RECESSED BEAM



DIMENSIONS



ORDERING LOGIC

WS-RBEAM						
SERIES	LENGTH	LUMENS PER FOOT	DISTRIBUTION	CCT	CRI	FINISH
WS-RBEAM	xx= Run Length	350= 350 LPF 500= 500 LPF 750= 750 LPF 1000= 1000 LPF XXX= Custom LPF	SD= SatinIce Diffuse	30K= 3000K 35K= 3500K 40K= 4000K	80= 80	<u>STANDARD</u> PW= Powder Coat White

MOUNTING	VOLTAGE	ELECTRICAL	OPTIONS
T-GRID TBX = 9/16" Grid 15/16" Grid 9/16" Grid (Tegular Tile) 9/16" Screw Slotted T-Grid 15/16" Prelude TEG15 =15/16" Grid (Tegular Tile)	U= 120-277	1C= Single Circuit	BATTERIES (# indicates quantity) #EMB6 = 6W EM Battery (Iota/Bodine) #EMB10 =10W EM Battery (Iota/Bodine) Continuous Runs with Batteries must have Ordering Guide Worksheet (page 3) submitted with order.

COSMETIC BEZEL

CB= Cosmetic Bezel (Screw/ Rod Mount)
CBY= Cosmetic Bezel (Yoke Mount)¹

SPACKLE FLANGE

SF= Spackle Flange (Screw/ Rod Mount)
SFY= Spackle Flange (Yoke Mount)

EXAMPLE: WS-RBEAM-20-500-SD-35K-80-PW-TBX-U-1C-1EMB10

Type:	
Project:	
REP/Agent:	
Order #:	



5 DAY TURNAROUND

FEATURES

- ★ Shipment up to 500' in 5 working days
- ★ Continuous lensing - runs up to 150'
- ★ Standard 2', 4', 6' and 8' units or continuous rows
- ★ Single piece aluminum extrusion housing
- ★ Linear runs with proprietary joiner design
- ★ Snap-in lens and reflector for easy installation
- ★ 3 Step MacAdam ellipse binning
- ★ Efficacy up to 130 lm/W
- ★ Approved for dry and damp locations
- ★ 0-10v dimming is standard
- ★ Dim to 1% of output current is standard
- ★ IC Rated
- ★ L70 > 50,000 hours



Intertek



RoHS COMPLIANT

LUMEN PACKAGES

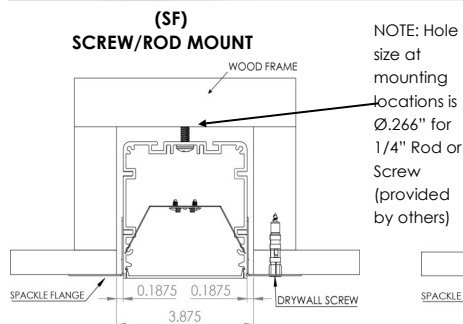
Based on 3500K CCT. Other CCT available.

MODEL	LUMENS	INPUT WATTS	Lm/W
WS-RBEAM-4-1000-SD-35K	4,000	34	118
WS-RBEAM-8-1000-SD-35K	8,000	65	122

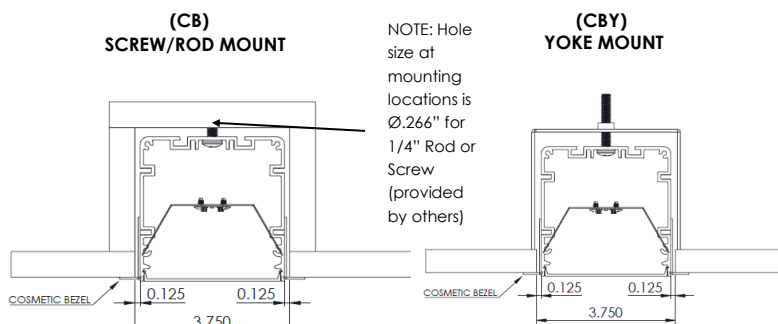
RECESSED BEAM MOUNTING OPTIONS

Type:	
Project:	
REP/Agent:	
Order #:	

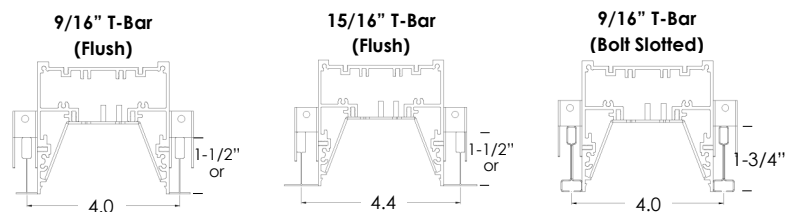
SF - Spackle Flange



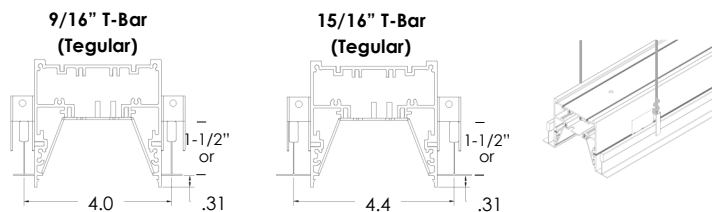
CB - Cosmetic Bezel



T-BAR/T-GRID Options - TBX



TEG15



T-GRID LENS AND HOUSING LENGTHS

Individual & Continuous Run

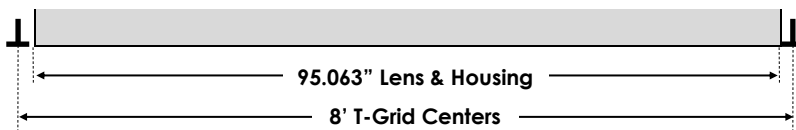
The lengths of individual fixtures and run lengths specified in the ordering logic is the distance between the centers of the T-Grids. The actual length of the fixtures and the lens will be shorter from that specified length. In a run, the last fixture compensates for the T-Grid.

TBX

4' FIXTURE



8' FIXTURE

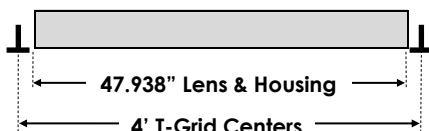


12' RUN

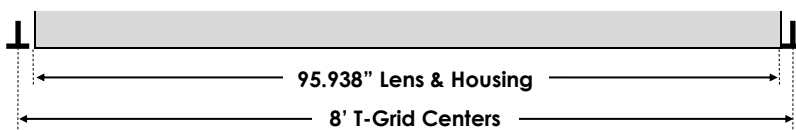


TEG15

4' FIXTURE



8' FIXTURE



12' RUN



RECESSED BEAM

SPECIFICATIONS

Type:	
Project:	
REP/Agent:	
Order #:	

Housing

Nominal 3 1/2" x 3 1/2" square housing of continuous extruded 6063 T5 aluminum.

Luminaire Length

2', 4', 6' or 8' lengths are available for a single stand-alone section. Using internal joiners, sections can be joined to form longer rows.

Battery

Lithium ion battery providing up to 720lm(6W) or up to 1200lm(10W) for 90 minutes. UL924 listed. Class 2 compliant. Meets Title 20 CEC (California Energy Commission) efficiency standards.

Lensing

Snap-in .080" thick acrylic lensing with impact modifier

Source

Four standard lumen packages are available in four color temperature options (3000K, 3500K, 4000K and 5000K) — all within 3 MacAdam ellipses.

Certification

Intertek cETLus Listed. RoHS (Restriction of Hazardous Substances) and Buy American Act compliant.

Environment

Suitable for dry and damp locations.
Operating temp.: -40°C to +45°C
-40°F to +113°F

Dimming Driver

Universal Lighting Technologies (ULT) Everline series of LED drivers allows tunable output currents to achieve infinite configurations of output. UL Class 2 recognized. 0-10v interface can be wired as Class 1 or Class 2 circuit. Included 2.5Kw ring and wave overcurrent protection, isolation of each individual output and a fully potted driver to protect from heat and vibration. Power factor <.93

Packaging

Sustainably manufactured outside cardboard box and biodegradable, protective poly-foam luminaire inserts.

