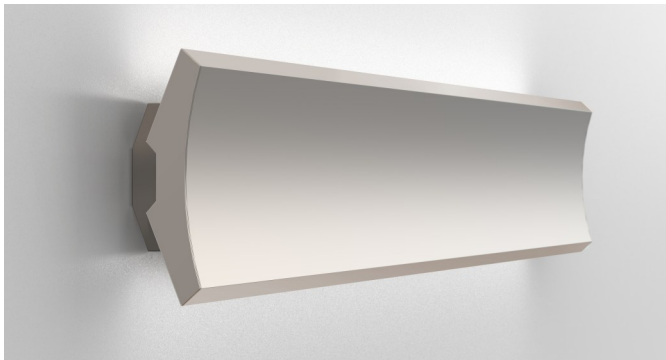
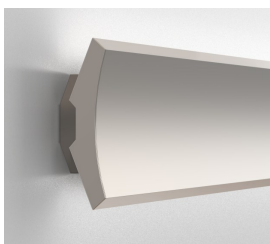


| | |
|------------|--|
| Type: | |
| Project: | |
| REP/Agent: | |
| Order #: | |

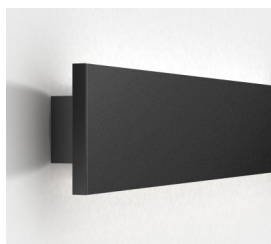
WALL GRAZER DIRECT/INDIRECT



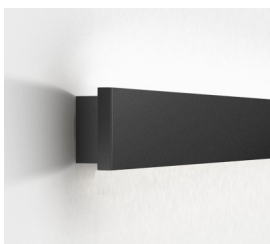
FACE PLATE OPTIONS



CONCAVE

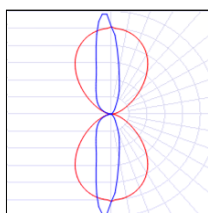


FLAT



MINI FLAT

DISTRIBUTION

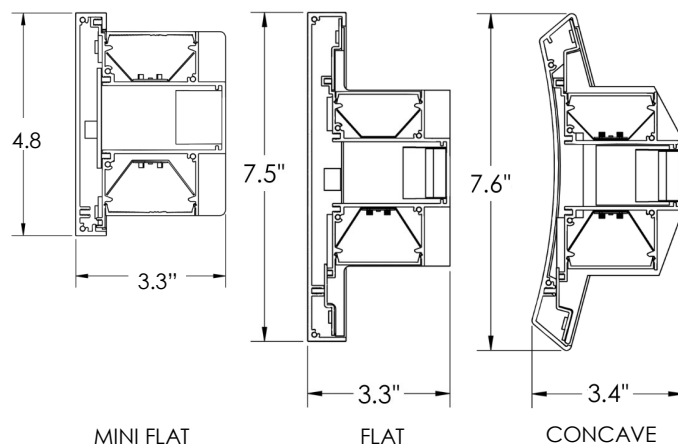


GRZ= Graze

FEATURES

- ★ Standard 2', 4', 6' and 8' units
- ★ Fixture length increments down to 1/16"
- ★ Two piece aluminum extrusion housing
- ★ Snap-in lens for easy installation
- ★ 3 Step MacAdam ellipse binning
- ★ Efficacy up to 121 lm/W
- ★ Soft diffuse indirect lighting
- ★ Approved for dry and damp locations
- ★ 0-10v dimming is standard
- ★ Dim to 1% of output current is standard
- ★ 90 CRI (R9 50min) available
- ★ CA Title 24 / JA8 installation compatible
- ★ Consult factory for TM21, TM30, LM79 and LM80
- ★ L70 > 50,000 hours

DIMENSIONS



| | |
|------------|--|
| Type: | |
| Project: | |
| REP/Agent: | |
| Order #: | |

WALL GRAZER DIRECT/INDIRECT

| WALLDI | | | | | | |
|--------|----------------|---|---|--------------------------|----------------------------|--|
| SERIES | LENGTH | LUMENS/FT (DIRECT) | LUMENS/FT (INDIRECT) | DISTRIBUTION (DIRECT) | DISTRIBUTION (INDIRECT) | CCT |
| WALLDI | XX= Run Length | 350= 350 LPF 500= 500 LPF 750= 750 LPF 1000= 1000 LPF XXX= Custom LPF | 350= 350 LPF 500= 500 LPF 750= 750 LPF 1000= 1000 LPF XXX= Custom LPF | GRZ= Graze | GRZ= Graze | 27K= 2700K 30K= 3000K 35K= 3500K 40K= 4000K 50K= 5000K TW= Tunable White ¹ (2700-6500K) |

| CRI | FINISH | MOUNTING | TRIM | VOLTAGE | ELECTRICAL |
|---------------------------------|--|--|---|----------------------|--|
| 80= 80 90= 90 (R9 50 min) | STANDARD PW= Powder Coat White PB= Powder Coat Black PS= Powder Coat Silver PREMIUM RALxxx= Powder Coat RAL xxxx (Gloss Finish) PSFx= Prem Stock Finish See pg. 5 for standard and premium options. CUSTOM PO= Powder Other | HWM= Horizontal Wall Mount VWM= Vertical Wall Mount | MF= Mini Flat F = Flat C= Concave | U= 120-277 C= 347 | 1C= Single Circuit 2C= Separate D/I Circuits (separate control of direct and indirect) MC= Multiple Circuits (multiple switch legs across run length) EC= Emergency Circuit (separate power drops for EC fixtures) GTD= Generator Transfer Device |

OPTIONS

SPECIALTY DRIVERS (Standard driver is 0-10V, dim to 1% output current)

DT1= eldoLED EcoDrive Dim to 1% (0-10V)
DTZ= eldoLED SoloDrive Dim to 0.1% (0-10V)
PSRD= Philips Sensor Ready (DALI) Driver
LDE1= Lutron Hi-Lume EcoSystem LED driver w/ Soft-on, Fade-to-Black
TW-A= Tunable White, 0-10V²
TW-EL= eldoLED DUALdrive Tunable White (DALI)²
LD2=Lutron DALI 2 Digital Tunable White driver with 1% dimming²

BATTERIES ("#" indicates quantity)

#EMB6= 6W EM Battery (Iota/Bodine)
#EMB10= 10W EM Battery (Iota/Bodine)
#FCEMB10= 10W EM Battery (Factory Choice)
#FCEMB14= 14W EM Battery (Factory Choice)

OTHER

DMX= DMX Lighting Control (RGBW)

SENSORS

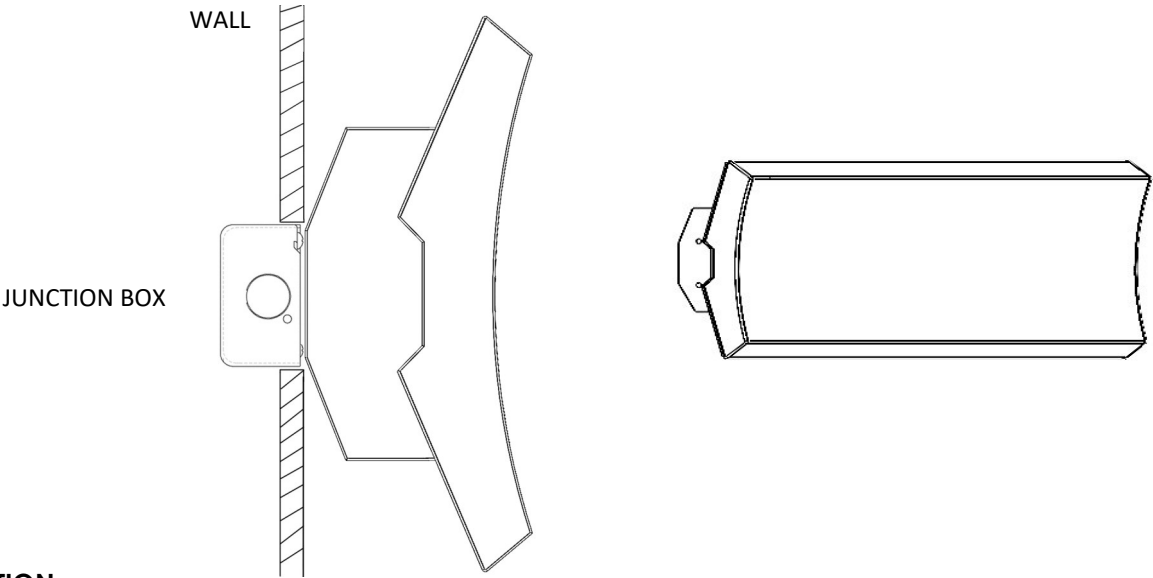
AWN-R-W= Lutron Athena Wireless Node (RF only)³ - White Finish
AWN-R-B= Lutron Athena Wireless Node (RF only)³ - Black Finish

EXAMPLE: WALLDI-8-500-750-GRZ-GRZ-35K-80-PW-WM-U-1C-1EMB10

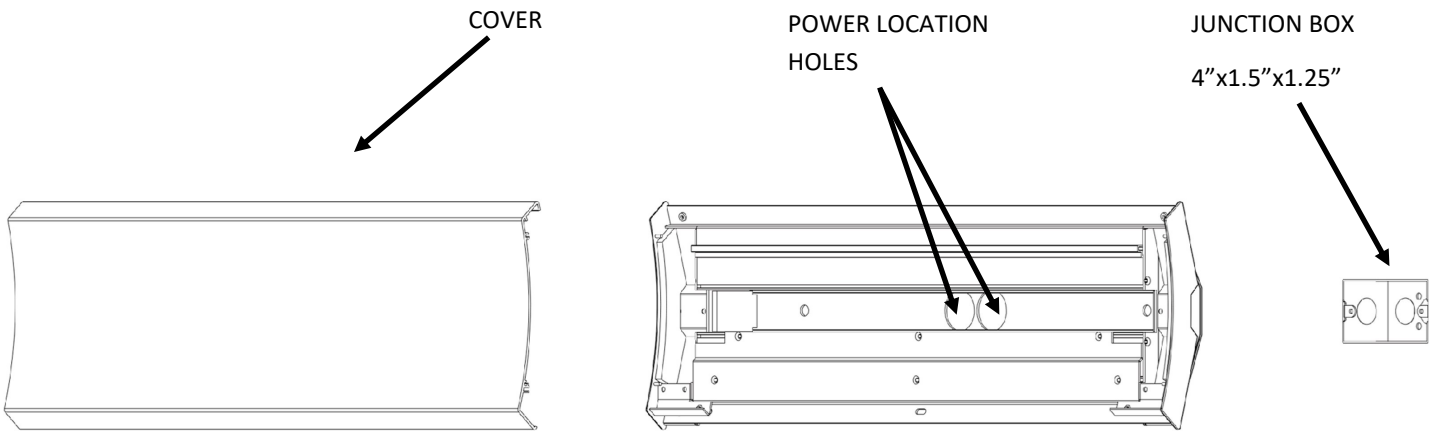
WALL GRAZER DIRECT/INDIRECT

MOUNTING OPTIONS

(x)WM - Wall Mount



POWER LOCATION



WIRING DIAGRAMS

Wiring configurations are dependent on the options chosen. Below are a few examples of our standard wiring that is used to power the fixture.

| WIRING | |
|--------------|------------------|
| HIGH VOLTAGE | LOW VOLTAGE |
| 18 GA | |
| H = HOT | +D(V) = +DIMMING |
| N = NEUTRAL | -D(G) = -DIMMING |
| GND = GROUND | |

HOT (BLACK)

NEUTRAL (WHITE)

GROUND (GREEN)

+DIMMING(VIOLET)

-DIMMING (GRAY)

This wiring diagram is showing a standard set of wires for a basic fixture.

| WIRING | |
|----------------|------------------|
| HIGH VOLTAGE | LOW VOLTAGE |
| 18 GA | |
| S = SWITCHED | +D(V) = +DIMMING |
| N = NEUTRAL | -D(G) = -DIMMING |
| U = UNSWITCHED | |
| GND = GROUND | |

SWITCHED (BLACK)

NEUTRAL (WHITE)

GROUND (GREEN)

UNSWITCHED (RED)

+DIMMING(VIOLET)

-DIMMING (GRAY)

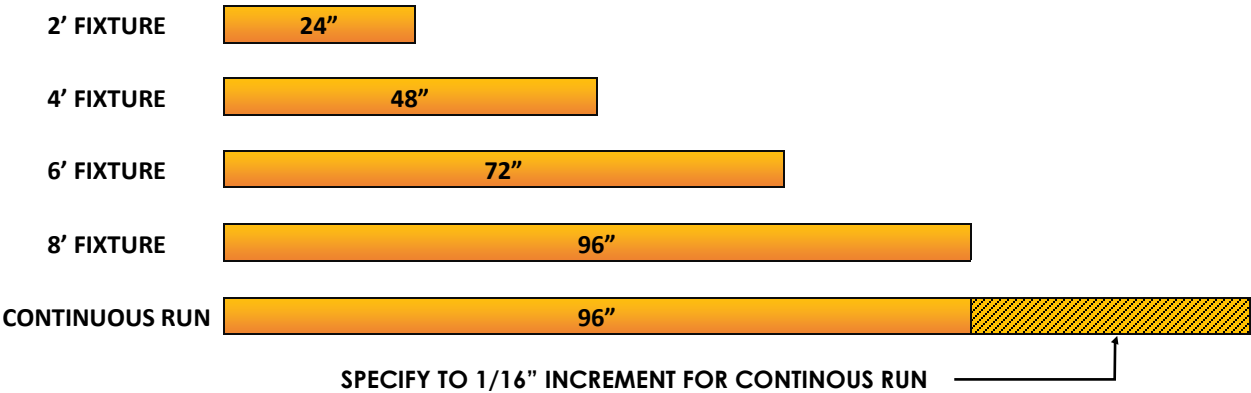
This wiring diagram is showing a set of wires for a fixture with a emergency battery.

WALL GRAZER DIRECT/INDIRECT

INDIVIDUAL AND CONTINUOUS FIXTURE CONFIGURATION

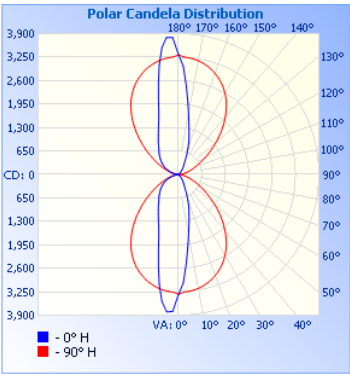
STARTEK
LIGHTING AMERICA

Individual fixtures are available from 2' to 8'. The standard construction for run lengths is to build with as many 8' fixtures as possible and finish the run with a shorter length fixture if needed. If a different configuration is needed to meet an aesthetic requirement, please indicate this on your P.O. when placing your order.



PERFORMANCE

WGZR-X-1000-SD (90+ CRI)



| Zonal Lumen Summary | | |
|---------------------|---------|-------------|
| Zone | Lumens | % Luminaire |
| 0-30 | 1,614.7 | 22.1% |
| 0-40 | 2,266.9 | 31.1% |
| 0-60 | 3,213.9 | 44% |
| 60-90 | 434.6 | 6% |
| 70-100 | 213.5 | 2.9% |
| 90-120 | 434.6 | 6% |
| 0-90 | 3,648.5 | 50% |
| 90-180 | 3,647.7 | 50% |
| 0-180 | 7,296.2 | 100% |

| Model | Lumens | Watts | LPW |
|--|--------|-------|-----|
| WALL-4-912-912-GRZ-GRZ-27K-90-PB-WM-U-1C | 7300 | 85 | 85 |
| WALL-4-912-912-GRZ-GRZ-30K-90-PB-WM-U-1C | 7300 | 81 | 89 |
| WALL-4-912-912-GRZ-GRZ-35K-90-PB-WM-U-1C | 7300 | 76 | 95 |
| WALL-4-912-912-GRZ-GRZ-40K-90-PB-WM-U-1C | 7300 | 76 | 96 |
| WALL-4-912-912-GRZ-GRZ-50K-90-PB-WM-U-1C | 7300 | 74 | 98 |

| Model | Lumens | Watts | LPW |
|--|--------|-------|-----|
| WALL-8-912-912-GRZ-GRZ-27K-90-PB-WM-U-1C | 14,600 | 163 | 89 |
| WALL-8-912-912-GRZ-GRZ-30K-90-PB-WM-U-1C | 14,600 | 154 | 94 |
| WALL-8-912-912-GRZ-GRZ-35K-90-PB-WM-U-1C | 14,600 | 147 | 99 |
| WALL-8-912-912-GRZ-GRZ-40K-90-PB-WM-U-1C | 14,600 | 144 | 101 |
| WALL-8-912-912-GRZ-GRZ-50K-90-PB-WM-U-1C | 14,600 | 143 | 102 |

| Luminance Data (cd/sg.m) | | | |
|--------------------------|---------------|----------------|----------------|
| Angle in Degrees | Average 0-DEG | Average 45-Deg | Average 90-Deg |
| 45 | 941 | 3617 | 39689 |
| 55 | 351 | 748 | 29825 |
| 65 | 424 | 480 | 20998 |
| 75 | 617 | 682 | 15006 |
| 85 | 1587 | 1732 | 12853 |

| Candela Distribution | | | | | |
|----------------------|------|------|------|------|------|
| | 0 | 22.5 | 45 | 67.5 | 90 |
| 0 | 3315 | 3315 | 3315 | 3315 | 3315 |
| 5 | 2461 | 2362 | 2544 | 2867 | 3249 |
| 10 | 1619 | 1584 | 1855 | 2417 | 3199 |
| 15 | 1122 | 1127 | 1371 | 1981 | 3108 |
| 20 | 762 | 793 | 1040 | 1607 | 2974 |
| 25 | 426 | 479 | 777 | 1303 | 2803 |
| 30 | 278 | 301 | 529 | 1063 | 2582 |
| 35 | 186 | 203 | 344 | 857 | 2315 |
| 40 | 98 | 118 | 231 | 680 | 2002 |
| 45 | 39 | 51 | 152 | 512 | 1664 |
| 50 | 13 | 12 | 78 | 371 | 1328 |
| 55 | 12 | 11 | 25 | 245 | 1014 |
| 60 | 11 | 10 | 13 | 155 | 748 |
| 65 | 11 | 9 | 12 | 79 | 526 |
| 70 | 10 | 9 | 11 | 27 | 358 |
| 75 | 9 | 8 | 10 | 22 | 230 |
| 80 | 9 | 8 | 10 | 19 | 135 |
| 85 | 8 | 7 | 9 | 17 | 66 |
| 90 | 8 | 6 | 8 | 15 | 25 |

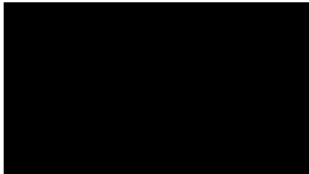
WALL GRAZER DIRECT/INDIRECT

FINISHES

STANDARD FINISHES



WHITE MINI TEXTURE



BLACK MINI TEXTURE

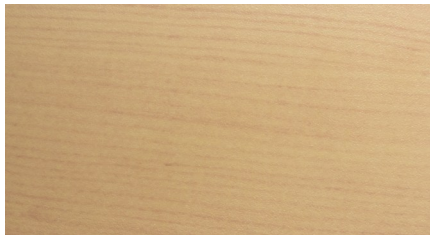


SILVER SPARKLE TEXTURE

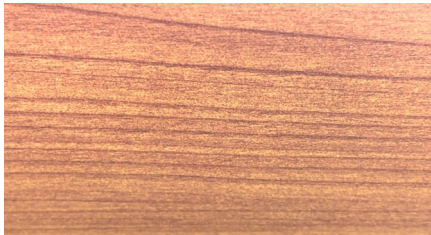
PREMIUM STOCK FINISHES



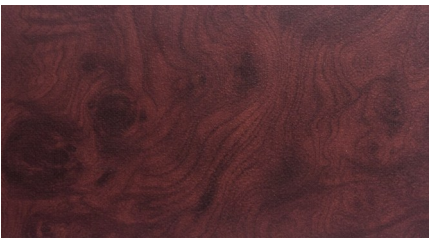
PSF001 (WOOD#1)



PSF002 (WOOD#2)



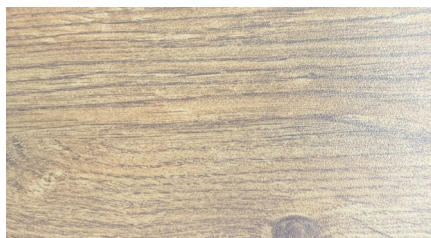
PSF003 (WOOD#3)



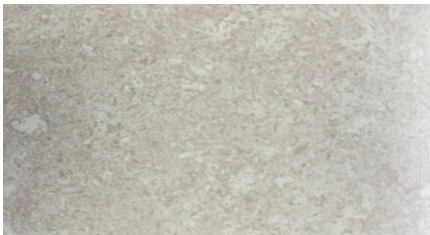
PSF004 (WOOD#4)



PSF005 (WOOD#5)



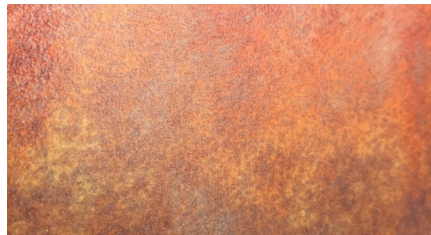
PSF006 (WOOD#6)



PSF007 (STONE #1)



PSF008 (STONE #2)



PSF009 (METAL #1)

NOTE: A minimal impact to lead times will apply to products specified with Premium Stock Finishes (PSF). It is not to be assumed that these finishes are stocked in our warehouse, but rather, are readily available to us for your project. All other custom finishes (PO) will incur a set up fee and will add an extended lead time to your project.

WALL GRAZER DIRECT/INDIRECT

SPECIFICATIONS

Housing

Nominal 7.6" X 3.4" housing of continuous extruded 6063 T5 aluminum.

Luminaire Length

2', 4', 6' or 8' lengths are available for a single stand-alone section. Using internal joiners, sections can be joined to form longer rows.

Battery

Lithium ion battery providing up to (14W) for 90 minutes. UL924 listed. Class 2 compliant. Meets Title 20 CEC (California Energy Commission) efficiency standards.

Lensing

Snap-in .080" thick acrylic lensing with impact modifier

Source

Four standard lumen packages are available in four color temperature options (3000K, 3500K, 4000K and 5000K) — all within 3 MacAdam ellipses.

Certification

Intertek cETLus Listed. RoHS (Restriction of Hazardous Substances) and Buy American Act compliant.

Environment

Suitable for dry and damp locations.
Operating temp.: -40°C to +45°C

Dimming Driver

LED driver allows tunable output currents to achieve infinite configurations of output. UL Class 2 recognized. 0-10v interface can be wired as Class 1 or Class 2 circuit. Included 2.5Kw ring and wave overcurrent protection, isolation of each individual output and a fully potted driver to protect from heat and vibration. Power factor <.93

Packaging

Sustainably manufactured outside cardboard box and biodegradable, protective poly-foam luminaire inserts.

WARRANTY

5-year limited warranty. Complete warranty terms can be located at:

http://www.starteklightingamerica.com/images/pdf/warranty/Beam_Series_Warranty.pdf

Note: Actual performance may differ as a result of installation environment and final application.
All values are design or typical values, measured under laboratory conditions, at 25°C (77°F) .