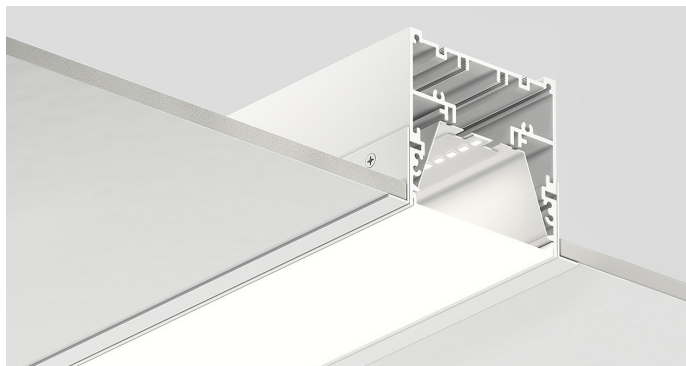
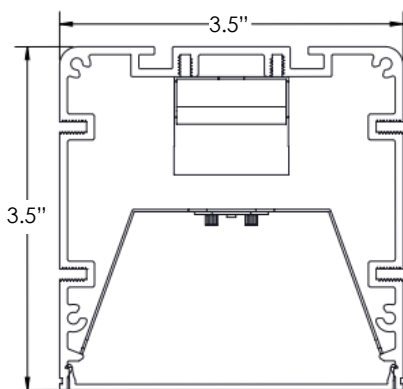


# RECESSED BEAM



## DIMENSIONS



## ORDERING LOGIC

WS-RBEAM						
SERIES	LENGTH	LUMENS PER FOOT	DISTRIBUTION	CCT	CRI	FINISH
WS-RBEAM	xx= Run Length	350= 350 LPF 500= 500 LPF 750= 750 LPF 1000= 1000 LPF XXX= Custom LPF	SD= SatinIce Diffuse	30K= 3000K 35K= 3500K 40K= 4000K	80= 80	<u>STANDARD</u> PW= Powder Coat White

MOUNTING	VOLTAGE	ELECTRICAL	OPTIONS
----------	---------	------------	---------

**T-GRID**  
TBX= 9/16" Grid  
15/16" Grid  
9/16" Grid (Tegular Tile)  
9/16" Screw Slotted T-Grid  
15/16" Prelude  
TEG15=15/16" Grid (Tegular Tile)

**COSMETIC BEZEL**  
CB= Cosmetic Bezel (Screw/ Rod Mount)  
CBY= Cosmetic Bezel (Yoke Mount)<sup>1</sup>

**SPACKLE FLANGE**  
SF= Spackle Flange (Screw/ Rod Mount)  
SFY= Spackle Flange (Yoke Mount)

**EXAMPLE: WS-RBEAM-20-500-SD-35K-80-PW-TBX-U-1C-1EMB10**

Type:	
Project:	
REP/Agent:	
Order #:	



**5 DAY TURNAROUND**

## FEATURES

- ★ Shipment up to 500' in 5 working days
- ★ Continuous lensing - runs up to 150'
- ★ Standard 2', 4', 6' and 8' units or continuous rows
- ★ Single piece aluminum extrusion housing
- ★ Linear runs with proprietary joiner design
- ★ Snap-in lens and reflector for easy installation
- ★ 3 Step MacAdam ellipse binning
- ★ Efficacy up to 130 lm/W
- ★ Approved for dry and damp locations
- ★ 0-10v dimming is standard
- ★ Dim to 1% of output current is standard
- ★ IC Rated
- ★ L70 > 50,000 hours



Intertek



RoHS COMPLIANT

## LUMEN PACKAGES

Based on 3500K CCT. Other CCT available.

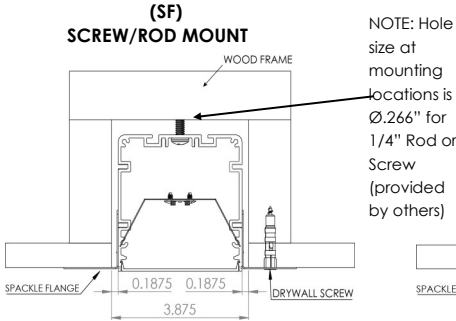
MODEL	LUMENS	INPUT WATTS	Lm/W
WS-RBEAM-4-1000-SD-35K	4,000	34	118
WS-RBEAM-8-1000-SD-35K	8,000	65	122

# RECESSED BEAM

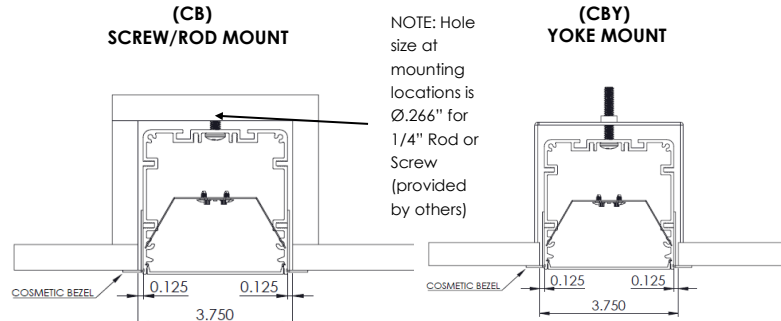
## MOUNTING OPTIONS

Type:	
Project:	
REP/Agent:	
Order #:	

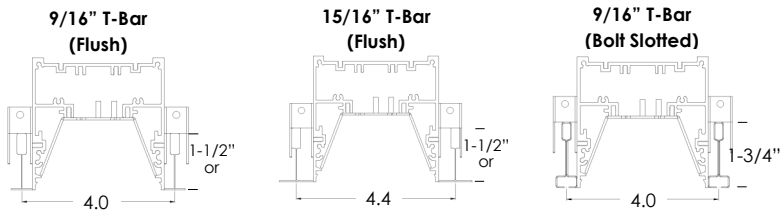
### SF - Spackle Flange



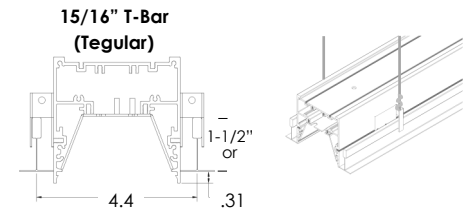
### CB - Cosmetic Bezel



### T-BAR/T-GRID Options - TBX



### TEG15



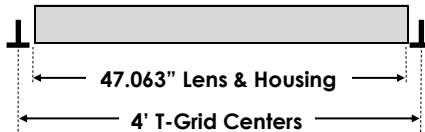
### T-GRID LENS AND HOUSING LENGTHS

#### Individual & Continuous Run

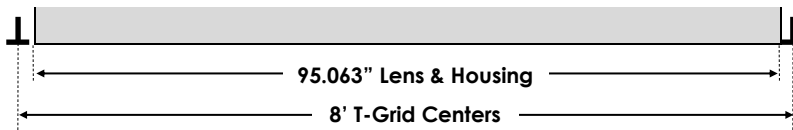
The lengths of individual fixtures and run lengths specified in the ordering logic is the distance between the centers of the T-Grids. The actual length of the fixtures and the lens will be shorter from that specified length. In a run, the last fixture compensates for the T-Grid.

#### TBX

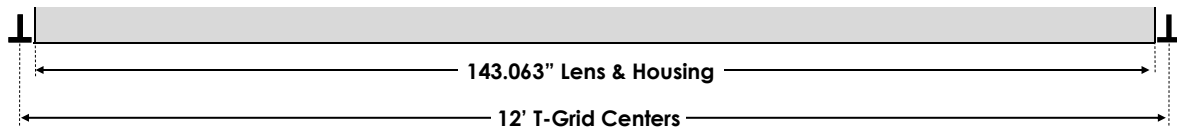
##### 4' FIXTURE



##### 8' FIXTURE



##### 12' RUN

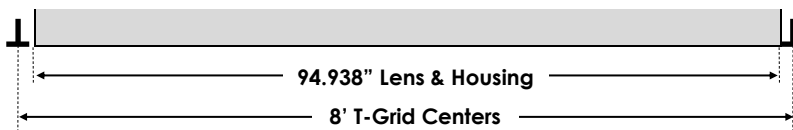


#### TEG15

##### 4' FIXTURE



##### 8' FIXTURE



##### 12' RUN



# RECESSED BEAM

## SPECIFICATIONS

Type:	
Project:	
REP/Agent:	
Order #:	

### Housing

Nominal 3 1/2" x 3 1/2" square housing of continuous extruded 6063 T5 aluminum.

### Luminaire Length

2', 4', 6' or 8' lengths are available for a single stand-alone section. Using internal joiners, sections can be joined to form longer rows.

### Battery

Lithium ion battery providing up to 720lm(6W) or up to 1200lm(10W) for 90 minutes. UL924 listed. Class 2 compliant. Meets Title 20 CEC (California Energy Commission) efficiency standards.

### Lensing

Snap-in .080" thick acrylic lensing with impact modifier

### Source

Four standard lumen packages are available in four color temperature options (3000K, 3500K, 4000K and 5000K) — all within 3 MacAdam ellipses.

### Certification

Intertek cETLus Listed. RoHS (Restriction of Hazardous Substances) and Buy American Act compliant.

### Environment

Suitable for dry and damp locations.  
Operating temp.: -40°C to +45°C  
-40°F to +113°F

### Dimming Driver

Universal Lighting Technologies (ULT) Everline series of LED drivers allows tunable output currents to achieve infinite configurations of output. UL Class 2 recognized. 0-10v interface can be wired as Class 1 or Class 2 circuit. Included 2.5Kw ring and wave overcurrent protection, isolation of each individual output and a fully potted driver to protect from heat and vibration. Power factor <.93

### Packaging

Sustainably manufactured outside cardboard box and biodegradable, protective poly-foam luminaire inserts.

